



# GROW Quarterly Newsletter

Area Chapter of the Germans from Russia Heritage Society (GRHS)

Volume 5 Issue 3

April - May - June 2006

## Message from the President



**Roger Haas, President**

With the scurry of activity, it feels like the 2006 GRHS Convention will begin tomorrow, when it is still 3.5 months away. The program is 99.9% complete and everything is falling into place, thanks to the excellent team work by the Area Chairs and supporters.

The Holiday Inn is basically filled with 900 room nights reserved by Conventioneers. Thanks to the Holiday Inn Staff, Conventioneers will be directed to other off-site reciprocal hotel arrangements. Do ask that the hotel where you will reserve room(s) that they will provide shuttle service. Holiday Inn will provide shuttle service as they can, but their service will be squeezed in, realizing that priority will be given to Conventioneers coming and going to & from the airport plus other accommodation to the hotel proper.

The Pre-registration and Programs are in the mail to each of the members of the GRHS, Portland German American Society, German American School of Portland, the Oregon Chapter AHSGR, and the GROW Associates/Honoraries. Please notify your friends and family that are not members of the above groups by making copies for them of your Pre-Registration, or requesting a registration from Registrar, Jan Haberman, 503-252-5480 [haberman988@msn.com](mailto:haberman988@msn.com). If you have a computer, you can go online and type in <http://www.grhs.org/convention.html>, to download the Convention Program and the Registration. Complete page 7 of the Registration with your selections and corresponding remittance to cover your designations.

With the excellent Tours on Wed, 12 July, about 60 Speakers/Presenters, top quality music, delicious food, and enthusiastic GROW members welcoming our visitors, everyone will be greeted as royalty and departing with German songs in their hearts. This will be a time to see old friends, gain new family relationships, treasure/take pride in your heritage, and learn new aspects of your culture that are astonishing.

The GRHS Library from Bismarck with all the family histories, the Jubilees and Centennials, current and from yesteryear, along with many, many resources will be at your finger tips. You will wish that the Library were open 24 hrs each day, but the Head Librarian and Executive Director will need some rest also to be in their best form. Therefore, plan on 8AM to 6PM, Thurs 13 July thru Sat 15 July.

Because our program is so extensive, you will have to be highly selective in the Presentations that you will be taking in. There will be 4 or 5 Presenters each hour for five sessions on each of the three days. Discussion has been entertained to video tape all sessions to make available by CD or other for those sessions that you have wanted to also hear and would like a copy of their presentation. Please let me know at [rahaas@haasfamily.us](mailto:rahaas@haasfamily.us) if you have such capability or if you know of someone who would be willing to tape the sessions. This would be an excellent historic and archival record for future reference as well as for the Conventioneers at cost for the production.

On the last part of each day, Movies/Videos will be shown that have been recent documentaries or have been on a very high demand list to be shown. There is something for everyone's taste or hot button to be turned on

*Continued on page 2.*

## Inside This Issue

<i>Ed's Corner</i> .....	2
<i>February Chapter Meeting Summary</i> .....	2-3
<i>2006 Convention Library Tips</i> .....	4
<i>2006 Convention Schedule of Events</i> .....	4-6
<i>2006 Convention Registration Form</i> .....	7
<i>Lodging &amp; Attractions in Portland Area</i> .....	8
<i>In Remembrance - Del Usselman</i> .....	9
<i>Quarterly Calendar</i> .....	10
<i>GROW Banner History</i> .....	11-12

## Ed's Corner

The people of German and European heritage are great travelers and pioneers. We have used whatever transportation facility that was handy and affordable at whatever time period we lived in. I closed the last *Corner* with this statement: "At the time Lewis & Clark were exploring the travel accommodations from St Louis to the Pacific Ocean, a lot of our predecessors were traveling from Germany to new homes in Russia. Often they traveled by boat down the Danube River or river craft on Russian Rivers to South Russia and the new German colonies. The accommodations were on par with those for Lewis and Clark."



Ed Weber

This *Ed's Corner* is a continuation of my last comment because as hosts for the GRHS Convention we have a lot of country to show and brag about here in Portland, Oregon and Washington. I don't think any of our guests will come to Portland traveling by boat or horseback, however most will follow Lewis and Clark's route to this area. Portland is not only near the end of the Lewis and Clark trail but also the end of the Oregon Trail.

Here in Oregon and Washington travel by water is one of our large commercial enterprises. Seattle and Tacoma on the Puget Sound are large seaports. The Columbia River from the Pacific Ocean at Astoria to Portland also makes this area available to large ocean going ships. A large portion of the grain grown in Washington and Oregon find their way down the Columbia River by barge and railroads to be loaded on ocean-going vessels.

The GROW Chapter has been selling the book, *German Pride 101 Reasons to Be Proud You're German*, and if you don't have a copy be sure to get one. On page 25 there is this comment about some prominent Germans:

*"John Jacob Astor left his village of Waldorf in Germany and arrived in the United States in 1784 with twenty-five dollars and seven flutes. He amassed a fortune from real estate dealings and the fur trade, and at his death was by far the richest man in the country, worth an estimated 20 million dollars. John D. Rockefeller made millions and became one of the world's most famous philanthropists.*

*Frederick Weyerhaeuser, nicknamed the Timber King, was born in 1834 in Niedersaulheim, Rhein-Hesse, and came to America in 1852 as a penniless youth. He worked as a day laborer near Erie, Pennsylvania, and then moved to Rock Island, Illinois, where he advanced quickly. In Rock Island he was put in charge of a sawmill and then a timber yard. After the panic of 1857 he was able to buy both with money he had saved. Soon afterwards, he bought logs from the shores of the Mississippi and acquired additional sawmills. Weyerhaeuser then began to buy up pine tracts in Wisconsin, Idaho, Washington, and Oregon. In*

*1891, he moved to St. Paul, Minnesota, where he became a friend and neighbor of James J. Hill, the operator of the Northern Pacific Railroad. Hill sold Weyerhaeuser more than three million acres of forests at a bargain rate. By the turn of the twentieth century, Weyerhaeuser owned more timberland than any other American."*

The Forestry Center in Portland is another added attraction to show our guests at the Convention in July. I probably don't need to point out that the city at the end of the Lewis and Clark Trail is actually Astoria, Oregon, named for the founding firm, John Jacob Astor Fur Company. If our Convention guests travel out to Fort Clatsop they might visit the Forestry Center first and then stop at Camp 18 for lunch where there is a magnificent display of old and new logging equipment that was used to log the Pacific Northwest.

*That's it from Ed's Corner*

## President's Message, cont.

and to be amused, etc. Accordionists, a Vienna trained and opera singer will thrill you as will the 65-member melodious Liedertafel Harmonie Club. The renowned Arthur Flegel, by many a request, will grace us with his exceptional voice. The Polka Beat Dance band will also thrill you whether you dance or just want to listen.

We are excited and eager to see you in attendance in this first GRHS Convention in the Pacific Northwest. Set your calendar, plan on cheering with gusto, and welcoming our guests and visitors.

Roger Haas

## GROW Chapter Meeting Summary 26 Feb 2006

Col Jerry Lauzon, President of the Mt Angel Oktoberfest with his wife Connie, in full regalia, with exhibits, awed the 49 attendees with his presentation, answers, and pictures. This was a meeting in which many local residents wanted to learn and hear from someone that has made a study of a quaint neighboring village near Portland. A couple of songs and a little dance to exemplify helped further to understand the festivals from 1878 to the present. If your schedule did not permit you to attend Sunday, you will have another opportunity to hear this expressive gentlemen at the July GRHS Convention in Portland. His topic is already prepared and it will be different, but equally of the same superior quality. Delight yourself in hearing Colonel Jerry.

Our attendees were very generous in giving \$70.88 toward the building use and support of the Convention. Thank you. Also, the raffle receipts which are put into the Convention Fund amounted to \$40. Jan Prunier, our Newsletter Editor quilted and gifted two lovely table runners, which were purchased by Dennis Levi and Vivian

*Continued on page 3.*



**Col. Jerry and Connie Lauzon, speakers at the 26 February 2006 Chapter Meeting.**

Messenger for a donation of \$20 each. Thank you, Jan, Dennis, and Vivian.

A cheerful and fun time is when we honor our members with the remembrance of their birthday and anniversaries. We were very honored to have our GROW Membership Chair, Geri Gander, and our special guest, Assistant Treasurer Ned Obermeyer, to be part of our little celebration. Congratulations for sharing another milestone and allowing us to sing to you.

We were so glad to see Helen Majhor, Lorraine Geiszler, and Ed Weber who are under doctors' care. We continue to miss Amelia Lybarger and Paul Voeller. Board Director, Jenice Gibson, was absent due to a replacement of her left knee. She claims she is getting along quite well and expects to be at our next Board Meeting. Thanks for your prayers and your thoughts for their return to more normalcy.

We were pleased to see our first webmaster, Bradlee Mertz. Regina Ewing, Betty Thatcher's sister, who previously attended our meeting, very much enjoyed everyone's fellowship and now joined our GROW family.

Also, Tim & Glenoa Tuttle have continued to visit us and may favor us with a book report at some future meeting. Arlene Maston, a new GROW family member, delighted us with her attendance. Ned Obermeyer, whom I mentioned earlier from the German American Society, is also their Newsletter Editor and we are sharing our Email Membership lists, giving you an opportunity to get the German American Society Newsletter. We hope you will appreciate this reciprocal agreement.

A couple of items of Old Business were 1) The need for a Chair for the GRHS Youth Essay Contest. Last year our GROW member Kurt Radtke's granddaughter, Nikki Maher, was a top winner. Are you aware of someone in your family of middle school thru college who would like to enter a contest and write on some subject related to the German Russian heritage? Prizes are from \$100 to \$750 See [www.grhs.com](http://www.grhs.com) and click on **GRHS Youth Program** for more information. 2) Effective 1 Jul

2006, four director positions (3 for Class 2009 and 1 for Class 2008) will be vacant. All GROW members are eligible. These positions are an honor, do not require special talents, but do require commitment and teamwork. Elections will take place in April and Installations will be in June.

One item of New Business that the GROW Membership confirmed unanimously was the Board of Directors' decision to have the GROW Chapter gift \$250 to the Heritage Foundation for Germans from Russia (HFGR). The mission of the HFGR is to encourage gifts to the Foundation, which benefit and support the goals, objectives, and purposes of GRHS, manages these gifts in perpetuity, and manages gifts according to the wishes of the donor in the case of gifting for a specific purpose. Any individual gift is tax deductible. See [www.hfgr.org](http://www.hfgr.org) or email to [info@hgr.org](mailto:info@hgr.org) for more information.

NOTE: A few program changes. There will NOT be a May Chapter Meeting, and due to GROW hosting the GRHS Convention in July, a picnic may not be held in 2006. The 26 March Chapter Meeting will promulgate author, traveling psychologist, comedian Ron Schauer and his lovely wife, Pat, on their 2005-2006 experiences before, during, and after Christmas in Germany by sound and picture. The topic will be From Hildegard to Dachau. The 23 April Chapter Meeting at the Deutsches House will feature St Josef's Winery by Josef and Lillie Fleischman of Canby. They are traveling to Germany in March. The 25 June Chapter meeting will be featuring Humorist & Historian Ell Schiermeister who will honor us with his self-deprecating wit.

The beautiful royal purple Chapter vests have been requested by two out-of-State GROW members to wear at the 2006 GRHS Convention. If you have not purchased your Vest for the GROW cost of \$12.95, you will want to do that while you still have a selection in the sizes.

The refreshments are always a big attraction to the membership and the donors never let you down. Providing special blueberry newtons and two types of cookies was Lorraine Geiszler; Chips Ahoy cookies were given by Lorraine Werner; sheet carrot cake, crispy kuchen cookies and lemonade were brought by Ann Gumeringer; Coffee & tea was provided by Glen Gumeringer; warm bread pudding & topping and also a bundt cake were brought by Alice Summers; brownies with walnuts were brought by Rosalie Schachterle; white frosted zucchini bars were brought by Leona Hix, Marcine Herinck brought a fresh Marion berry pie; and Roberta Haas brought cookies, cupcakes and juice.

The door prize was won by Kurt Radtke and donated by Alice Summers. Ann Gumeringer, Rudie Wagenmann, Arlen Maston, Vivian Messenger, Anita Weber, JoAn Goehring, Ed Goehring and Jeannie Goldhammer were raffle winners. The hyacinths were donated by the Gumeringers. Other gifts were donated by the Radtkes, Hixs, Gumeringers, and David Martin.

Before Ed Weber led in the prayer melody of *So nimm den Meine Hände*, Connie Lauzon invited all to hear the 165 member Mt. Angel Festival Oregon Chorale singing *Schubert Mass in E-flat* led by Solveig Holmquist, Director at 4P at the St. Mary Church, Mt Angel on Sunday, 12 March 2006. [www.festivalchorale.org](http://www.festivalchorale.org) for more information.

Roger



# How to Prepare to Use the Library Resources during the Annual GRHS International Convention

Using the GRHS Library during the annual convention is the only opportunity to do research for many of our members. Below is a list of the items that will be brought from the GRHS Library:

- (1) Dewey Decimal card catalog to assist you in locating the books
- (2) Cemetery records from the United States and Canada
- (3) Church records from the United States and Canada
- (4) Family history books
- (5) Local history books from the United States and Canada
- (6) Passenger manifest extractions
- (7) Pedigree charts
- (8) Village information from the former Soviet Union

Here are some helpful hints to make your research time as profitable as possible:

- (1) Know what state and county your ancestors settled in when they arrived in the United States or Canada. This information will give you insights into which cemetery records, church records, or local history books might contain clues about your ancestors.
- (2) Know what family surnames you are searching for.

This information will keep you focused while using the family history book, passenger manifests and pedigree charts.

- (3) Know what religion your ancestors were. The villages were separated by religion. Having this information will narrow your search
- (4) Know what village from the former Soviet Union your ancestors came from. This information will assist you in visiting with the village coordinators and glean what information you can from them and their resources.
- (5) Come prepared with dates for events in your ancestors lives

And last but not least:

- (6) Know what type of information you are searching for (define your goals). The GRHS Library is a very busy place

*Please do not bring original documents or photos. GRHS and the host chapter are not responsible for any lost items. Please remember, the GRHS Library is made up of donated 'one-of-a-kind' items that cannot be replaced.*

*Please use our valuable resources with the respect that they deserve.*

## 2006 Convention Schedule of Events

### WEDNESDAY, JULY 12

8:00 am Registration begins in the Ballroom Foyer (see directions in the main lobby).

**COLUMBIA CROSSROADS TOURS** will be providing us with air-conditioned buses, lavatory facilities and tour guides for a minimum of 25 participants. Time will be allotted for lunch on your own. Tour participants meet at the hotel lobby at 8:00 am for further instructions. Tour buses will leave at 9:00 am.

**COLUMBIA GORGE - Magnificent Beauty and Historic Sights.** Take in the breathtaking view from Crown Point Vista House located on the Historic Scenic Highway high above the Columbia River. This tour passes several waterfalls, including Multnomah Falls with a vertical drop of 600 feet. Observe the unusual rock formations on your way to visit Bonneville Dam, the first federal dam on the Columbia River. Visit the interpretive center and the fish hatchery where you learn of the life cycle of the salmon as well as see an 80-year old sturgeon. **\$38.00 - 5 hours.**

**PORTLAND CITY TOUR WITH GARDENS.** View the McCall Waterfront, fountains, public art, the financial district, China Town, and the Old Town sections. Visit Washington Park, home to 10,000 different varieties of roses and known as the International Rose Test Garden. Wander through the Japanese Garden with an authentic Japanese teahouse and pavilion. Also visit the Chinese Classical Garden, Portland's newest attraction. Admission fees included. **\$45.00 - 4 hours.**

**MT. ST. HELENS VOLCANO TOUR.** Make a visit to our

sister state of Washington, heading north to Mt. St. Helens. A stop at the National Volcanic Monument Visitors Center at Coldwater Ridge, Forest Learning Center, and Johnston's Ridge is a must. See the devastation of May 18, 1980. This powerful explosion sent pulverized rock and ash almost 14 miles into the atmosphere. The force of the blast flattened trees and destroyed nearly everything in its path. Learn about the "blast zone", pyroclastic flows, and biological regeneration of the largest avalanche recorded by man. Park fees included. **\$55.00 - 8 hours.**

Others on your own: Underground Caverns/Catacombs, Mt. Angel, Portland Spirit River Cruises, Spruce Goose, Evergreen Aviation, etc.

### THURSDAY, JULY 13

8:00 am - 6:00 pm Bookstore/Library/Research Room Open - Village Coordinators Available

8:00 am - Registration begins in the Ballroom Foyer (see directions in the main lobby).

**RIG = Regional Interest Group**

8:00-8:55 **Hoffnungstal RIG Annual Meeting.**

Dale Wahl Ballroom D

9:00-10:00 **Grossliebental (GDO) RIG Annual Meeting.**

Gayla Gray Ballroom A

9:00-10:00 **"I dream of you so often..." Ethnic Germans in Russia Write their American Relatives (1915-1937).**

Ron Vossler Ballroom B

9:00-10:00 **German Migration Motives from 1700 through 1900.** George Hoff Ballroom C

*Continued on page 5.*

## 2006 Convention Schedule of Events (cont.)

9:00-10:00 **Use of the Computer for Genealogical Research.** Marty McMahon Ballroom D  
 10:30-12:00 **Convention Welcoming Ceremony (Library will be closed) An Opening Song with a Spoken Word** Art Flegel Hammons Hall  
 12:15 **Lunch on your Own**  
 1:15-2:15 **Beresan (BDO) RIG Annual Meeting.** Val Ingram/Dave Kilwien Ballroom A  
 1:15-2:15 **Escape and Survival: The Last Train Out.** Willi Wutzke Ballroom B  
 1:15-2:15 **Germany to Prussia-Poland to Russia RIG.** Tom Stangl Ballroom C  
 1:15-2:15 **An Overview to Estate Planning and Asset Management.** Ted Becker, HFGR Treasurer and Walt Rehling, retired CLU and HFGR President Ballroom D  
 3:00-4:00 **Kutschurgan Village Resources.** Robert Schuh (Roth-Rehwalt) Ballroom A  
 3:00-4:00 **Bessarabian District RIG Annual Meeting.** Dale Wahl Ballroom B  
 3:00-4:00 **HFGR Combined Annual Business and Directors Meeting** Ballroom C  
 3:00-4:00 **Prussia to Oregon by Way of Russia.** Kurt Radtke Ballroom D  
 4:15-5:15 **German American Golden Oldies Tunes.** Gary Stark Mt. Bachelor Room  
 4:15-5:15 **Family Tree Maker (Advanced).** Valerie Ingram/Dave Kilwien Ballroom A  
 4:00-5:00 **GRHS Board of Directors Quarterly Meeting** Ballroom D  
 6:00 **Barbeque Buffet – Entertainment: Emter Family Accordionists** Hammons Hall  
 8:00 **Movie – A Soulful Sound: Music of the Germans from Russia** Ballroom A  
 8:00 **Miracle Town: Odessa** Marie Krieger Ballroom B  
 8:00 **German Immigration & Development of Mt Angel.** Gerald Lauzon Ballroom C  
 8:00 **What is Behind the Names?** Dr. Leland Elhard Ballroom D  
 8:00-10:00 **Village Coordinators and Convention Host Chairmen** Willamette Room  
**Library Night**

### FRIDAY, JULY 14

Remember that Friday is designated as Chapter Day, so wear your chapter Vest.

Please bring your chapter Scrapbook and Banner. Leave your Scrapbook at the Registration Desk or on the Scrapbook Table for display.

8:00 am - 6:00 pm Bookstore/Library/Research Room Open – Village Coordinators Available

9:00-10:00:00 **Russia to China: The Way Around.** Hervey Gimbel Mt. Bachelor Room

9:00-10:00 **To Be Announced.** Gwen Pritzkau Ballroom A

9:00-10:00 **Glückstalers (GCRA) Annual Meeting.** Margaret Freeman Ballroom B

9:00-10:00 **Crimea RIG Annual Meeting.** Debbie Beick/Wanda Hopkins Ballroom C

9:00-10:00 **Germany to Hungary to Russia.** Gayla Gray Ballroom D

10:15-11:15 **Reading Cyrillic Script.** Val Ingram/Dave Kilwien Ballroom A  
 10:15-11:15 **The Works and Projects of the Germans from Russia Heritage Collection.** Michael Miller Ballroom B  
 10:15-11:15 **From Ukraine to Spokane: Three Ways of Telling a Family History.** Alex Herzog and Maria Mckeirman Ballroom C  
 10:15-11:15 **Microfilm Acquisitions from the Odessa Archives and Related Mennonite Research.** Dr. Timothy Janzen Ballroom D  
 11:45-1:00 **Luncheon Awards.** Vera Hoff/Del Beck  
**Pride in Your Heritage Youth Essay Contest Awards.** Entertainment: Johanna Oh, International Opera Singer, Soprano Hammons Hall  
 1:15-2:15 **Grandma's Käse Knepfle.** Dr. Harley Miller, Tara Miller, Rachel Miller, Carol Miller Bixel Ballroom A  
 1:15-2:15 **Voices of the Future: Readings from Winning Essays.** Vera Hoff Ballroom B  
 1:15-2:15 **Did They Come Here Through a Canadian Port?** George Dorscher Ballroom C  
 1:15-2:15 **EWZ Records Extraction Project.** co-presenters: Dr. Timothy Janzen, Elli Wise, Ed Bischoff Ballroom D  
 2:30-3:15 **Refreshment Break: Fresh Berry Cobbler and Music by Emter Accordionists**  
 3:30-4:30 **An Illustrated History of West Prussia.** Roger Ehrich Ballroom A  
 3:30-4:30 **Our visit to the Mennonite Germans from Russia in South America - Paraguay and Brazil.** William Wiest Ballroom B  
 3:30-4:30 **Visiting the Land of Our Forefathers.** Bob Schneider Ballroom C  
 3:30-4:30 **GRHS/RIG Webpage Show and Tell.** Dale Wahl Ballroom D  
 4:30-5:30 **Sing-A-Long.** Mabel Kusler, Del and Sharon Beck Ballroom D  
 6:00 **Banquet: Reach Out and Touch.** Dr. Larry Metzler, banquet speaker Hammons Hall  
**Entertainment.** Janzen Family Ensemble  
**Awards.** Life Membership Certificates  
 8:00 **Two Dozen (or more) Ways to Research Germans from Russia.** Dave Obee Ballroom A  
 8:00 **Movie: Prairie Crosses Prairie Voices—Iron Crosses of the Great Plains** Prairie Public Heritage Collection Ballroom B  
 8:00 **Movie: Your Land, of My Forefathers' Choice—Bessarabia Story** Ballroom C  
 8:00 **Family Tree Maker (Basic).** Valerie Ingram/Dave Kilwien Ballroom D

### SATURDAY, JULY 15

8:00 am - 6:00 pm Bookstore/Library/Research Room Open – Village Coordinators Available

7:45-8:45 **Officers' Breakfast.** Val Wangler Mt. Bachelor Room

9:00-10:00 **Stalin's Secret Files.** Dave Obee Ballroom A

9:00-10:00 **DNA and Family History: Synergy at Work.** Ugo Perego Ballroom B

*Continued on page 6.*

## 2006 Convention Schedule of Events (cont.)

9:00-10:00 **A Brief History of Germans in Bessarabia.**  
Dr. Elvire Eberhardt Ballroom C  
10:00 **GRHS Annual Business Meeting** Ballroom D  
11:45-1:00 **Luncheon: Boosting our Membership/New Chapters.** Del Beck/Val Wangler Hammons Hall  
**Luncheon Awards: Lane Alton Nusz Award**  
**Pride in Your Heritage Youth Essay Contest Awards**  
**Entertainment: Rendition of Old Man River.** Arthur Flegel  
1:15-2:15 **Shortcuts to Reading Russian Census Documents Yourself.** Brent Mai Ballroom A  
1:15-2:15 **To Understand the Characteristics of a Russian German.** Shirley Nitschke Ballroom B  
1:15-2:15 **BDC/EWZ: What is it? What can be Found There?** Tom Stangl Ballroom C  
1:15-2:15 **An Overview to Estate Planning and Asset Management.** Ted Becker, HFGR Treasurer and Walt Rehling, retired CLU and HFGR President Ballroom D  
2:30-3:15 **Refreshment Break: Fresh Berry Cobbler and Music by Emter Accordionists**  
3:30-4:30 **A Tale of Two Anabaptist Families.**  
Dr. Art Wiens Ballroom A  
3:30-4:30 **Flemmer Family Saga: Moldova to North Dakota and Siberia.** Ken Flemmer Ballroom B  
3:30-4:30 **Organizing and Creating a Genealogy Treasure Book.** Lucy Simpson Ballroom C  
3:30-4:30 **GRHS Clearing House/Town Meeting.**  
Dale Wahl Ballroom D  
4:30-5:30 **Sing-A-Long.** Mabel Kusler, Del and Sharon Beck Ballroom D

6:00 **Banquet: Germans from Russia in Western Canada—Preserving the Culture.** Horst Gutsche, banquet speaker  
**Family History, Joseph Height Literary and Chapter Charter**  
**Entertainment: 65 Member Liedertafel Harmonie Portland Choir** Hammons Hall  
8:00 **Movie. From the Russian Steppe to the Pacific NW: The Germans from Russia in Portland, Oregon.**  
by Steven Schreiber Ballroom A  
8:00 **Miracle Town: Leavenworth.**  
Robert and Nancy Kelly Ballroom B  
8:00 **Movie. ...and When They Shall Ask: A Docu-Drama of the Russian Mennonite Experience** Ballroom C  
9:00 **Dance to the Oregon Polkabeats** (Lyle Heilman, Jack Hillend, Randy Lawrentz) Hammons Hall

### SUNDAY, JULY 16

9:15 **Prelude Music for Memorial Service.**  
Ballrooms A and B  
9:25 **Introduction.** Dr. Harley Miller  
9:30 **Non-denominational Memorial Service**  
Rev. Dr. Clarence Knoepfle  
Passing of the Convention Torch from the GRHS Chapter in Portland, Oregon to the National GRHS for the 2007 Convention. Hosts of the 2007 GRHS International Convention  
**Closing Remarks by GRHS President**

## Raffle Tickets For Sale

# Win a Twin-Size Quilt

\$2.00 each

3 for \$5.00

*Originally Designed and Quilted by Alice Summers (shown right) who has donated it to GROW for Raffle at the GRHS Convention July 12-16, 2006*

Tickets available at Chapter Meeting or call Maxine Daily (503) 253-8388.

Sales proceeds will go toward convention expenses.

Tickets are Tax Deductible





## GRHS Convention July 12-16, 2006 REGISTRATION FORM

Please complete this form and mail the entire page covering registration, meals, tours, etc. with your check made payable to "GRHS 2006 Convention" in U.S. funds only. Please send to GRHS 2006 Convention, 130 SE 155th Place, Portland, Oregon 97233.

	<u>Per Person</u>	<u>Number</u>	<u>Total Amount</u>
Pre-registration (Members)	\$ 35.00	x _____	= \$ _____
Late registration (Members)	\$ 40.00	x _____	= \$ _____
Pre-registration (Non-members)	\$ 45.00	x _____	= \$ _____
Late registration (Non-members)	\$ 50.00	x _____	= \$ _____
One Day registration (Thurs.____, Fri.____, Sat.____)	\$ 25.00	x _____	= \$ _____
Thursday Evening Buffet	\$ 29.00	x _____	= \$ _____
Friday Luncheon	\$ 18.00	x _____	= \$ _____
Friday Dinner	\$ 28.00	x _____	= \$ _____
Saturday Luncheon	\$ 21.00	x _____	= \$ _____
Saturday Banquet	\$ 33.00	x _____	= \$ _____
Package price for above meals:	\$122.00	x _____	= \$ _____
Friday PM Cobbler Break	\$ 6.00	x _____	= \$ _____
Saturday PM Cobbler Break	\$ 6.00	x _____	= \$ _____
Breakfast Buffet Sat.____ )	\$ 11.00	x _____	= \$ _____
Tours on July 12: Columbia Gorge Tour	\$ 38.00	x _____	= \$ _____
Portland City Tour with Gardens	\$ 45.00	x _____	= \$ _____
Volcanic Mt. St. Helens Tour	\$ 55.00	x _____	= \$ _____
<b>Total Amount Enclosed</b>			<b>\$ _____</b>

Please list each person separately. All children attending must be listed (please use reverse side for additional names). This information is needed to prepare nametags. **PLEASE PRINT CLEARLY.**

Name \_\_\_\_\_  
 Maiden Name \_\_\_\_\_  
 Ancestral Village(s) \_\_\_\_\_  
 Complete Address \_\_\_\_\_  
 \_\_\_\_\_  
 Email Address \_\_\_\_\_  
 Name of Chapter \_\_\_\_\_

Name \_\_\_\_\_  
 Maiden Name \_\_\_\_\_  
 Ancestral Village(s) \_\_\_\_\_  
 Complete Address \_\_\_\_\_  
 \_\_\_\_\_  
 Email Address \_\_\_\_\_  
 Name of Chapter \_\_\_\_\_

Dinner on Friday night will be designated as "Ancestral Village Night". You may select/mark a region below with an X for table seating. There will also be a sign-up list for table seating near the Registration Desk if you wish to sit with others who have a similar ancestral background. Dr. Tim Janzen will help you with regard to your village(s) within the following areas and will help arrange for the table seating that you may find most enjoyable:

- Beresan  Bessarabia  Caucasus  Crimea  Ekaterinoslav/Taurida  Glückstal  Grossliebental  Hoffnungstal  
 Kutschurgan  Poland-Prussia  Volga  Non-Designated

Cooking Käse Knepfla Workshop (Friday) Please mark the box if you will be attending.

Volunteers are welcome. Please indicate your interest by marking the box if you are willing to help.

Entertainment: Do you play an instrument that you can bring along? If yes, name: \_\_\_\_\_

Check if first timer  Check if Life Member  May we include your name and address on a list of convention attendees, which we will print and sell to others attending the convention?  yes  no

**The pre-registration deadline is June 11, 2006.** Late registrants must purchase meal tickets at least 24 hours before the meal is scheduled. No meal refunds will be given after July 7, 2006. No registration fee is required for youth age 18 and under. Meals for youth are the same price as listed above.

## Lodging & Attractions in Portland Area

### PORTLAND HOTEL/MOTEL LISTING

Portland Airport Holiday Inn, 8439 NE Columbia Blvd., 503-256-5000. Columbia Conference Center (Convention Headquarters). The Special Rate is \$88.00 per night, including tax. When making reservations, please indicate you will be attending the GRHS Convention. A block of rooms will be held until June 10, 2006.

### NEARBY LODGING:

Hampton Inn-Portland Airport, 8633 NE Airport Way, 503-288-2423  
 Howard Johnson Airport Hotel, 7101 NE 82nd, 503-252-2676  
 Radisson Hotel Portland Airport, 6223 NE 78th Ct., 503-251-2000  
 Ramada Inn & Suites-Portland Airport, 6221 NE 82nd Ave., 503-255-6511  
 Sheraton Portland Airport Hotel, 8235 NE Airport Way, 503-281-2500  
 Comfort Suites Motel-Airport, 12010 NE Airport Way, 503-261-9000  
 Courtyard by Marriott, 11550 NE Airport Way, 503-252-3200  
 Shilo Inns, 11707 NE Airport Way, 503-252-7500  
 Travelodge-Portland Airport, 9727 NE Sandy Blvd., 503-255-1400

### PORTLAND RECREATIONAL VEHICLE PARKS

Fir Grove RV Park, 5541 NE 72nd, 503-252-9993  
 Jantzen Beach RV Park, 1503 N Hayden Island Dr., 503-289-7626  
 Lantern Lane Mobile Villa, 1523 SE 162nd, 503-252-6924  
 Mobile Estates, 16745 SE Division, 503 761-4821  
 \*Portland-Fairview RV Park, 21401 NE Sandy Blvd., 503-661-1047, 877-777-1047  
 Rolling Hills Mobile Terrance & RV Park, 20145 NE Sandy Blvd., Fairview, 503-666-7282  
 Southgate Mobile, 7911 SE 82nd, 503-771-5262  
 Tall Firs Mobile Home & RV Park, 15656 SE Division, 503-761-8210

\* recommended by a GROW member

### PORTLAND & OREGON/WASHINGTON ATTRACTIONS

Portland, Oregon Visitors Association (POVA) 1000 SW Broadway, Suite 2300, Portland, OR 97205, 503-275-9750  
 Toll Free 1-800-962-3700, www.pova.com  
 Mt. Hood and Timberline Lodge, sales: 503-219-3192  
 www.timberlinelodge.com  
 Portland Classical Chinese Garden, NW 3rd Ave. Everett St., Portland, 503-228-8131 www.portlandchinesegarden.org  
 Portland Spirit River Cruises, 110 SE Caruthers St., Portland 503-224-3900; 800-224-3901  
 World Forestry Center, 4033 SW Canyon Rd., Portland 503-228-1367 www.worldforestry.org  
 Bridgeport Brewing Company, 1313 NW Marshall St., Portland 503-241-3612; 888-834-7546; www.bridgeport-brew.com

## GROW Committee Chairs

\*Board of Directors Member contact info on page 9.

**Calling** .....\*Oscar Geiszler  
**Car Pooling**.....\*Oscar Geiszler  
 Glenn Gumeringer (360) 573-6453  
 Bob Majhor (503) 648-5781  
**Hospitality/Greeting**.....\*Jan Haberman  
**Collection/Research & Genealogical Assistance**  
 Bob Schauer (360) 687-1905 - bschaue@pacifier.com  
**Library** .....Carrie Lippincott; Alice Summers  
 Vivian Messenger (503) 574-2271 - cvmesseng@hotmail.com  
 Glen Gumeringer - amggum@aol.com  
**Membership** .....\*Geri Gander  
**Newsletter** .....Jan Prunier - janice.prunier@verizon.net  
 Jennifer Messenger, labeler; Alice Summers, printing, mailing  
**Programs** ..... Roger Haas  
**Refreshments** .....Roberta Haas (503) 659-8248  
 Lorraine Geiszler; Ann Gumeringer; Jane Radtke;  
 Rosalie Schachterle; Paula Pfau  
**Pictorial Scrapbook**.....\*Maxine Daily  
**Special Interests/Obituaries**.....\*Jan Haberman  
**Sunshine Gals** .....\*Jan Haberman  
**Volunteer Coordinators**.....Dennis Levi (360) 699-4884  
 Jennifer Messenger (503) 574-2271; Joni Jundt (360) 210-4129  
**Website** .....Rich Aspenleiter

## GROW 2006 Convention Chairs

**Entertainment:** .....Vivian Messenger  
**Copiers:** .....Steve Geiszler  
**Food, Facilities & Equipment:** .....Bob Majhor, Kurt Radtke  
 & Ell Schiermeister  
**Library:** .....Bob Schauer  
**Memorial Service:** .....Dr Harley Miller  
**Programs:** .....Lola Weber  
**Publicity:** .....Roger Haas  
**Registration:**..... Jan Haberman, Kelly Garey, Jan Prunier  
 & Alice Summer  
**Tours:** .....Jenice Gibson  
**Treasurer:** .....Betty Thatcher  
**Volunteers Coordinators:** .....Jennifer Messenger & Joni Jundt

Oregon Zoo, Washington Park, 4001 SW Canyon Rd., Portland 503-226-1561 www.oregonzoo.org  
 Pittock Mansion, 3229 NW Pittock Dr., Portland 503-823-3623 www.pittockmansion.com  
 Oregon Coast Aquarium, 2820 SE Ferry Slip Rd., Newport, Oregon 541-867-3474  
 Oregon Museum of Science & Industry, 1945 SE Water, Portland 503-797-4000; 800-955-6674



# In Remembrance

## Delbert "Del" Usselman

March 25, 1932 - March 8, 2006

Delbert "Del" Usselman passed away on Wednesday, March 8, 2006 after an extended illness. He was born March 25, 1932 in Ipswich, South Dakota and graduated from Aberdeen High School in 1951. After the Navy, he married the love of his life, Donna Trask in 1953 and they moved to Salem, Oregon.

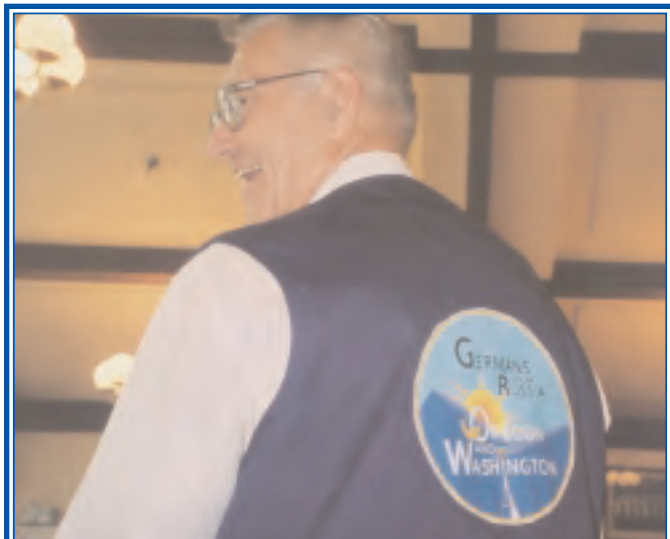


**Del Usselman**

Over his lifetime, he had many jobs, working for various newspapers and then retired from the Oregon Department of Revenue. He was a long-time member of St. Vincent De Paul Catholic Church. He enjoyed wood-working, fishing and traveling, especially "Snow Birding" to Arizona.

He is survived by his wife, Donna; daughter and son-in-law, Catherine and Don Ferris; brother, Gerald; sister, Geraldine Gander; and many nieces and nephews. He was preceded in death by his son, Michael J. Usselman. Services were held at St. Vincent de Paul Catholic Church in Salem, Oregon on Saturday, March 11, 2006. A rosary was at 10:30 a.m. followed by Mass at 11:00 a.m. Internment at Belcrest Memorial Park Cemetery in Salem was at 1:30 p.m.

Donations may be made in Del's memory to St. Vincent De Paul Catholic Church or the American Cancer Society. Arrangements were entrusted to the care of Alternative Burial & Cremation of Oregon, Sherwood.



## Chapter Vests Available

If you haven't ordered your chapter vest yet,  
call Maxine Daily, 503-253-8388  
or Roberta Haas, 503-659-8248  
or see her at the next Chapter Meeting  
where samples will be available to try on for size.  
They are \$12.95

## GROW Board of Directors

### Roger Haas, President/Liaison

8618 SE 36th Ave. (503) 659-8248  
Portland, OR 97222 rahaas@haasfamily.us  
Term ends: 2007

### Jan Haberman, Vice President

8110 SE Madison (503) 252-5480  
Portland, OR 97215 haberman988@msn.com  
Term ends: 2008

### Maxine Daily, Secretary

454 NE 69th Ave (503) 253-8388  
Portland, OR 97213-5504 max\_627@msn.com  
Term ends: 2006

### Alice Summers, Treasurer

130 SE 155th Place (503) 775-9929  
Portland, OR 97233 sewsum4u@msn.com  
Term ends: 2008

### Leona Koth Hix

2704 Haworth Ave. (503) 538-4508  
Newberg, OR 97132-1918 jwhix@comcast.net  
Term ends: 2008

### Geraldine Gander, Membership

14926 SE Lowell Lane (503) 625-3070  
Sherwood, OR 97140-7014 neatfamily@verizon.net  
Term ends: 2007

### Oscar Geiszler, Fundraising

803 5th Ave (503) 656-1802  
Oregon City, OR 97045 oscarandlorraine@msn.com  
Term ends: 2007

### Jenice Gibson, Convention Tours

14350 S. Hawthorne Ct. (503) 632-3990  
Oregon City, OR 97045-9167 largen@bctonline.com  
Term ends: 2006

### Betty Thatcher, Convention Treasurer

16345 SW 130th Terrace #51 (503) 639-8254  
Tigard, OR 97224-3008 b.b.thatcher@att.net  
Term ends: 2006

## Fundraising Opportunities—

### At No Cost To You!!

- Electronic Newsletters. Receive your newsletters via email, and save GROW in postage costs.
- Albertson's Scan Cards - Contact **Roger Haas** for your card if you don't already have one.

### Other Opportunities to Help...

- **Oscar Geiszler** is recycling inkjet and laser cartridges. Bring your empty cartridges to Chapter Meetings or contact Oscar directly. He can also help you receive approximately 50% discount on refilled cartridges.
- Visit **Alice Summers** before/after the Chapter Meetings to view the fascinating collection of books, audio CDs, videos, etc. that are available for sale. Also take a look at the tote bags, key chains and magnets, all with GROW logo.

# GROW 2005 Quarterly Calendar

A P R I L 2 0 0 6						
SUN	MON	TUES	WED	THURS	FRI	SAT
						1
2	3	4	5	6	7	8
9 <i>Palm Sunday</i>	10	11	12 <i>Board Meeting</i>	13	14 <i>Good Friday</i>	15
16 <i>Easter Sunday</i>	17	18	19	20	21	22
23 <i>Chapter Meeting</i>	24	25	26	27	28	29
30						
M A Y 2 0 0 6						
SUN	MON	TUES	WED	THURS	FRI	SAT
	1	2	3	4	5	6
7	8	9	10	11	12	13
14 <i>Mother's Day</i>	15	16	17 <i>Board Meeting</i>	18	19	20
21 <i>GROW Picnic</i>	22	23	24	25	26	27
28	29 <i>Memorial Day</i>	30	31			
J U N E 2 0 0 6						
SUN	MON	TUES	WED	THURS	FRI	SAT
				1 <i>Newsletter Deadline</i>	2	3
4	5	6	7	8	9	10
11	12	13	14 <i>Flag Day Board Meeting</i>	15	16	17
18 <i>Father's Day</i>	19	20	21	22	23	24
25 <i>Chapter Meeting</i>	26	27	28	29	30	

**Chapter Meetings are held at:**  
**Deutsches Haus**  
**7901 SE Division, Portland, OR**  
**Doors open at 1:00 pm**  
**Meeting starts at 2:00 pm until about 5:00 pm**  
**Coming from I-205 South take Exit 19 Ramp and turn West on Powell Blvd to 82nd Ave. Go .5 mile North to Division St., then turn left and go to 7901.**  
**Coming from I-205 North take Exit 19 Ramp onto Division St. Go West on Division to 7901.**

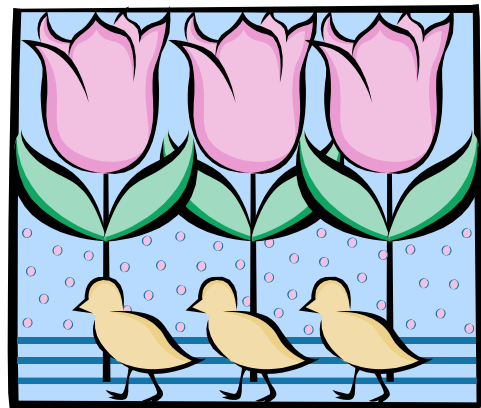
## Chapter Meetings

**26 March 2006** Author, traveling psychologist, comedian Ron Schauer and his lovely wife Pat, on their 2005-2006 experiences before, during, and after Christmas in Germany by sound and picture. The topic will be From Hildegard to Dachau.

**23 April 2006** St Josef's Winery by Josef and Lillie Fleischman of Canby. They are traveling to Germany in March.

**21 May 2006** 2006 GROW Picnic at Radtke's, 20023 Quinalt Dr., Oregon City, OR 97045, 503-518-8181

**25 June 2006** Humorist & Historian Ell Schiermeister who will honor us with his self-deprecating wit.



## Newsletter Submissions Welcomed!

**Please send articles, photos, stories, anecdotes, recipes, etc. to:**

**Janice Prunier, Editor**  
**1218 Pacific Ave., Everett, WA 98201**

**janice.prunier@verizon.net**

**Deadline for next issue is June 1, 2006.**

# GROW Banner History

The Germans from Russia Oregon and Washington Chapter of the GRHS was started May 18, 2001. The GROW Board of Directors proposed the design of two banners in 2003: one for outdoor use and one for indoor use. The outdoor banner was approved first and made its debut at the GRHS Convention in 2003. The indoor banner took a little longer to create. It was first shown at the GRHS Convention in 2004. Both were designed by Jan Prunier, Editor of the chapter's newsletter with lots of help from Maxine Daily who also did the quilting and sewing of the indoor banner.

The outdoor banner features royal blue mountains in the foreground, the left representing Mt. Hood and the right Mt. St. Helens. A sun is setting in the west behind the mountains over a light blue sky. The words "Germans



**GROW outdoor banner**

from Russia Oregon and Washington in white. There is a jumping salmon through the "O" in Oregon, which is known for having an abundance of wild salmon, and the Space Needle an historic landmark in Seattle replaces the letter "i" in Washington.

The indoor banner tells the story of our ancestors. The background is royal blue with the phrase "Freiheit, Glaube und Familie" (Liberty, Faith and Family) in red inside a pale yellow ribbon at the top. Under the ribbon on the left is the shape of the State of Oregon with a jumping salmon, fir trees and a rose (Portland's nickname is the Rose City). At the top right in an oval with a wood-toned frame is a photo of John Lutz, Greenway, SD and Carolina Roesler Lutz Weber from Eureka, SD, Maxine's grandparents. An interesting



## GROW Membership Application

### Germans from Russia Oregon and Washington



Years of Membership \_\_\_\_\_  New  Renewal

Birth Month (optional) \_\_\_\_\_ Anniversary Month (optional) \_\_\_\_\_

Name (please print) \_\_\_\_\_

Address \_\_\_\_\_

City \_\_\_\_\_ State \_\_\_\_\_ Zip \_\_\_\_\_

Phone (include area code) \_\_\_\_\_ Email address \_\_\_\_\_

Name of ancestral village(s) \_\_\_\_\_

Family surnames \_\_\_\_\_

Names of adults in household desiring membership cards \_\_\_\_\_

Enclosed is my remittance of \$ \_\_\_\_\_ Membership fees are due annually on January 1.

#### **GROW Newsletter/Operation Donation (minimum \$5.00)**

GRHS Membership \$40.00 • GRHS Lifetime Membership \$650.00 (\$130.00 per year)

**Make checks payable to GROW - US Currency Only • Mail to: Roger Haas, 8618 SE 36th Avenue, Portland, OR 97222**

**Please send email updates and address corrections to Geri Gander - neatfamily@verizon.net**

**GROW Quarterly Newsletter Deadlines: September 1 • December 1 • March 1 • June 1**

All submissions are welcome. If you would like any materials returned, please include a SASE.

Send articles to: [janice.prunier@verizon.net](mailto:janice.prunier@verizon.net) or by mail at 1218 Pacific Ave., Everett, WA 98201



## GROW Banner History, cont.

note...the photos were taken at different times and combined in making this banner. There are no known photos of them together. At the center of the banner is the GROW logo...a circle with blue mountains (Mt. Hood and Mt. St. Helens) and the sun setting behind them. The chapter name "Germans from Russia Oregon and Washington" is at the top in the light blue sky and G.R.O.W. is in white over the mountains. To the right under the photo is the shape of the State of Washington that is known for the Space Needle, apples and fir trees that are symbolized there. Under this is a sod house in tribute to the last standing sod house in Greenway, SD. The bottom left of the banner is to honor our ancestors for working the land. There is a windmill, furrowed field, iron plow and haystacks. Just to the right of this at the bottom of the banner is a farmer leading oxen that are pulling a wagon full of the fruits of their labors.



**GROW indoor banner.**



*Germans from Russia Heritage Society*

### **GROW Chapter**

8618 SE 36th Avenue  
Portland, OR 97222