

Special 10th Anniversary Edition



GROW Quarterly Newsletter

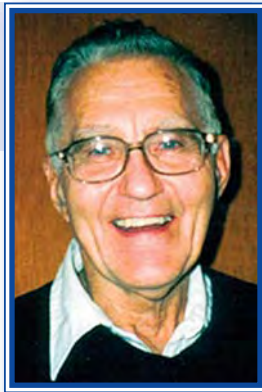
Area Chapter of the Germans from Russia Heritage Society (GRHS)

Volume 10 Issue 4

July - August - September 2011

Message from the President

Our GROW Ten Year Anniversary Celebration will be on the 28 August 2011 along with our Annual Picnic at the Happy Valley Park is at 13770 SE Ridgecrest Rd. There will be a covered shelter, electric outlets for making coffee and warming foods. Also, there are toilets, picnic benches for 60 people, volleyball, horseshoes, baseball and children's playground facilities. Everyone attending will be getting a prize. We will be honoring members who have donated a lot of time and talent during our 10 year history including Board Officers, present and former Directors, Program Presenters, Committee Members, Entertainers, etc. Further, the Emter family Accordionists will be entertaining us with music.



Roger Haas, President

Look for another article in this newsletter as to a map, directions, etc. Your ideas and input as to how we should celebrate will be greatly appreciated. Call Vice President, Jan Haberman, Picnic Chair at 503-252-5480 to share your ideas and/or suggestions.

We Have Moved

We are happy to announce that we have arrived at our new temporary home inside the BLC (Bethany Lutheran Church). All of the sister clubs, the Saturday German School, and the German American Society (GAS) Meetings will be held there.

Our first Chapter Meeting will be the 26 June, 2 pm. There is ample parking and easy access from the south side (Skidmore) via a long, slightly sloped ramp to the large room in the church basement and kitchen. Our library is on the same level down the hall to the north and then to the left. Follow the signs. You will want to come early and view the facilities and see the accommodations. The fireside room is almost across from the Library. The address is 4330 NE 37th Ave and one block south of Prescott (a main street from 82nd Ave, to Martin Luther King Blvd.) From the north, go on Lombard Blvd. or from I-84/Sandy Blvd. from the South, take 42nd Ave to Prescott. The number 75 bus will also take you there.

While we are referencing our new home for our library and meeting place, we should mention that

Continued on page 4.

Inside This Issue

<i>Eating Our Culture</i>	2
<i>Genealogy Forum</i>	3-4
<i>Special 10th Anniversary Section</i>	5-10
<i>Adi Hartfeil Biography</i>	11
<i>Ell Schiermeister Biography</i>	12
<i>It's All Earth & Sky</i>	12
<i>Helpful Hint from Sharon Bell</i>	12
<i>Board of Directors</i>	13
<i>Calendar</i>	14
<i>Historic Photo, Courtesy of Dr. Eric Schmaltz</i>	15
<i>Web Resources for Aiding Your Research</i>	16

Eating Our Culture

The problem was I couldn't see. Sitting on the seat and stretching my leg out to reach the gas pedal, my horizon was the top of the dash. If I could see, I couldn't drive. If I could drive, I couldn't see. Tough.

Dad had already driven off with the tractor and a wagon full of grain, leaving me a rusty 1938 truck with a bed full of wheat. He said to me, "Just go slow and keep your eyes on the road. If somebody comes from the other direction, just stop until they're past and the dust settles. See, you're learning to be a farmer."

Very good, I thought, I don't want to be a farmer. I was at the time transitioning from wanting to be an evangelist to wanting to be a singer. This was still a few years before Elvis. I don't want to be a farmer and I sure don't know how to drive this truck. What if I drive off a cliff? The only cliff I knew of was out a mile or so into the south pasture. If I ended up that far off the road, driving off a cliff would be the least of my worries.

I was standing on the seat, surveying the cockpit and wondering how long it would be before dad realized he'd made a huge mistake, when I noticed the little handle attached to the steering column. *This has got to do something*, I thought and jumped on the floor to start the monster. Working blind, I pressed in the clutch and threw the shift into first gear and crept forward.

Here we go, I said and scrambled up the seat to see about that little lever. I grabbed and yanked. The engine powered, the truck lurched, and I bounced off the back of the seat and pitched face first onto the floorboards. The truck barreled forward as I dragged myself onto the seat and eased the handle back. *We are flying.*

I wasn't a novice. I had driven the tractor before, steered the horses in from a field with a wagon (the one with which dad now was miles down the road); and I had once even backed this very same truck up to the barn to unload some hay. I was experienced. I'd just never gone anywhere before. *What if I get lost? End up down at Grandpa's rather than at the elevator. How many elevators are there? I have to pee.*



Ronald Schauer

I really hadn't thought much about stopping, and decided I didn't need to pee that badly. In the excitement of getting going, the idea of stopping going just didn't have any traction at all. Isn't it interesting how, when thoughts and doubts creep in, they keep coming. For example, I knew that I couldn't reach Napoleon Farmers Elevator by driving in a straight line. There were fences, a lake, probably houses and barns, and at least one grain field in the way. I figured I'd have to turn a corner somewhere. *TURN A CORNER?*

Only a few minutes passed before I saw the corner coming. Slowly, but coming. *Proper turning of the steering wheel is what this will be about*, I reasoned and made a few practice turns from one side of the road to the other and back again. I realized I had no idea which side of the road I needed to be on, so I hung pretty much to the middle.

I turned too sharply. I knew that as I was hanging onto the wheel to keep from flying out the right side door that had vigorously popped open. Overhandling the wheel back, I slammed into the driver's door and in that way, and with several more jerks and yanks, made it around the corner and onto County Road 13. I was very very close when I read that sign with only a second to apply one final yank to the wheel.

The steering wheel settled down, and I even slowed way down once when Fritz Schwarzenberger drove by with his tractor. And, I got started again without knocking myself off the seat.

Time sped on as I chugged down the road. After a while, I remembered the horn that I beeped when I passed the Zimmerman's and Uncle Bert's farm, and later when I came by some horses hanging out by the fence.

I remembered that Dad always slowed down when he came into town so I pulled back the handle. *I hope Mrs. Stroesser is looking out the window*, I thought as I rattled by her white house with the huge pink hollyhocks near the Baptist Church.

And there they were; the four huge elevators standing tall beside the railroad track. Each one had a line of trucks parked on the ramp going up to the door. At the third one, I saw the big Napoleon Farmers Elevator sign and right in front of the door was Dad, standing on the tractor and waving at me. I turned up the ramp.

Now how do I stop this thing?

Genealogy Forum

The St. Petersburg, Lutheran Parish Records

During the time that our ancestors lived in Russia the vital records (birth, marriage, death) were kept by the church parishes (Lutheran, Catholic, etc.). Russia was divided into several Lutheran consistories.

The St. Petersburg Consistory included north-eastern Russia, and what today is Ukraine and Moldova. Thus the German villages in Bessarabia, Kherson (the Odessa area) and Crimea were part of the St. Petersburg Consistory. Central and western Russia were in the Moscow Consistory. This included the Volga, and Caucasus areas. The 1832 law that established these consistories required that the parish records be copied and sent to the consistorial headquarter each year, where they were bound into multi-volume sets and archived. The St. Petersburg Consistory generated 274 volumes of these records from 1833 to 1885. These documents are stored in the Russian State Archives in St. Petersburg. Records for the Moscow Consistory have not been found, neither have copies of records for Catholic parishes been found.

When the communists took over Russia they tried to destroy religion, converting the churches for secular use and destroying church records. So the original parish records are basically non-existent. Besides birth, marriage and death records the local parish records normally also included family books something like family group sheets. These were not copied so we do not have copies of them today. A parish may have included several villages, so the records for your village may be recorded under the name of another village where the parish headquarters were located. However the birth and death records give the name of the village where they actually occurred. Marriages were recorded at the parish headquarters village, which may not be in the villages where the marriage occurred. Also during the time covered by these records, some parishes may have been divided or combined. Records for some parishes are missing for specific years. We do not know if the records were not copied, or whether something happened to them before they were bound into the book. So if you do not find a record for a specific birth, death or marriage, the records for that year may be missing.

The St. Petersburg, Lutheran Parish Records were filmed by the Latter-day Saints in 1993 and 1994. Then a general index (which roll of film contained the records for a particular village for a specific year)



Harold Lang, PhD

was made so that information on the films could be found. Since the records were bound into books each year, the records for a particular village are on a different roll of microfilm for each year. As soon as the films were available I began to order and go through them at the local Family History Center copying the pages that had my ancestral names (Lang, Reich, Pietz, Bonnet, Buckenberger) on them. The records are hand written in German script. I purchased a guide for reading that script. Also I had done some prior work with similar records for some villages in Germany. I could not determine every letter in a word but I soon learned to recognize names by determining the letter the name started with and the number and location of risers (l, t, etc.) and downers (p, g, etc.). I did make mistakes. Besides Buckenbergers there were also Landenbergers in the records. Now a capital script "L" and a capital script "B" look very similar, with the "B" having an extra flourish in. As a result I copied a bunch of Landenberger records thinking they were Buckenberger. If I had trouble determining what a letter was, I looked for a similar letter in another word and then determined what that word was. In this way one becomes familiar with the handwriting of the person who copied the record. One soon learns where certain information is located in the record, so you do not have to read the entire record to get the information you are looking for.

I told Margaret Freeman, the head of the Glueckstal Colonies Research Association (GCRA), what I was doing and she ask me to join a group of GCRA members that were going to extract and publish in English the data from the parish records for the Glueckstal Colonies. I felt that my ability to read these records and extract information was not good enough for publication, so I declined the offer. Others in GCRA went ahead and did the work and in 1997 published *Glueckstal Colonies Births and Marriages 1833-1900* (the records essentially ended in 1885) and *Glueckstal Colonies Deaths 1833-1900*, published in 1998. Other individuals have done similar extractions for other villages/regions. Most of these extractions can be found in the Odessa Digital Library <www.odessa3.org>. Click on "Collections", then scroll down to "St. Petersburg Archives" and click, then select your village/region of interest. Extractions done by different people contain different amounts of information. There is information in the original records that none of the extractions include. For example the original birth records give

Continued on page 4.

President's Message, cont.

President Egbert Kunrath and Vice President Ilse Kamin of the Austrian Club of Oregon will be our Presenters in June. We are eagerly looking forward to their sharing of their successes of bringing younger members into their memberships.

For September, we have a number of our members who will be traveling to the 2011 Spokane GRHS Convention. Their reports will be our main feature for our September Chapter Meeting program. They will be reflecting and comparing the Portland 2006 GRHS Convention program to 2011, reporting on the elections plus the future conventions in Bismarck in 2012 and the combined AHSGR and GRHS Minnesota Convention in 2013.

Our second edition of the Family Heritage Recipe Book has been published and is available, if you did not get your order, since we were sold out before the May Chapter Meeting. The price is \$12.50 plus \$4. s/h. NDSU and GRHS are selling our book for \$18. You can write to rahaas@haasfamily.us or call 503-659-8248 for your copy(ies) or save the postage by picking them up at the Chapter Meeting. Thank you.

We want to welcome New Board Member Adi Hartfeil, who has been a Chapter Meeting Presenter on several occasions, a former educator, traveler, etc. He will be our new Treasurer and Membership Chair. He has a very interesting career with a Masters Degree in math and applied science; besides having been a public school teacher, Adi has been a quality control official with Tektronix, and with a Quality Assurance Company. Look for his bio on page 11. Please welcome him as he commences to serve you, starting in July. He can be reached at 503-636-2272 or abhartfeil@q.com His wife, Barbara, has also been a Chapter Meeting Presenter on Genealogy. She has been a school teacher and has assisted Adi in his presentations.

We also want to welcome a second Board Member Ellworth (Ell) Shiermeister, who has served as an alternate as well a Board Director and is now again moving into a directorship. He likewise has been a Chapter Meeting Presenter on several occasions. He brings to us expertise in our Germans from Russia history, folklore, business management, plus a host of other talents. He assisted us as builder in the renovation of the GROW Library at the Deutsches Haus and helped many hours in moving our library and furnishings to BLC. Please welcome Ell by calling him at 360-253-2499 or ninamae1@gmail.com. Nina, his wife, has been a big help in the kitchen working with Roberta.

They replace retiring Kurt Radtke after 5 years and Alice Summers after 5½ years of service to you. Let's thank them for giving many hours to our Chapter.

Arlene Maston also has ably performed for 4½ years. Due to family health issues, her doctor has advised her to relinquish her Chapter assignments, but she will be continuing as a Director. We will miss Kurt, Alice and Arlene's talents and service. Please express thanks to each by calling Kurt at 503-518-8181 or jkrdtke@bctonline.com, Alice at 503-775-9929 or sewsum4u@msn.com, and Arlene at 503-255-5493 or amaston@aol.com.

Our Chapter has succeeded because of dedicated directors and volunteers. This was further recognized by our National GRHS President Don Ehreth, in a letter on page 5.

Thank You, for your support and commitment,
Roger

Genealogy Forum, cont.

the names of sponsors/Godparents (usually three) which could be useful in determining which branch of tribe the family belongs to. The death records also include the cause of death. So there is value in looking at the actual copies.

The Latter-day Saints have now digitized the copies of the records and placed them on line at www.familysearch.org. To find them look under "Browse by Location", then click on "Europe" and scroll down to "Russia, Lutheran Church Book Duplicates 1833-1885 - Browse Images" and click, then click on the region and then the district. For example, to find the records for any of the Glueckstal Colonies click on "Kherson", then on "Tiraspol", then on the parish name and then on the year. For Grossliebental or one of the surrounding villages click on "Kherson", then on "Odessa", then on the parish name and then on the year. If you are not familiar with the geographic subdivisions you may have to try more than one route. I looked for the Glueckstal Colonies under Odessa and did not find them, so I looked under Tiraspol and found them.

The Latter-day Saints have begun to index the records by name. These records can be found on the web site at the same location as the "Russia, Lutheran Church Book Duplicates 1833-1885" under the headings, "Russia, Births and Baptisms 1755-1917", "Russia, Deaths and Burials 1815-19017" and "Russia, Marriages 1793-1919". At the present time it appears that only a small portion of the records have been indexed. I assume the index will eventually be linked to the images. For those of you who have ancestors in Lutheran (evangelical) villages north of the Black Sea, this is a very good source of information.

GROW 10th Anniversary Special Section

Open Letter from Don Ehreth, GRHS President

Dear Roger and Members of the GROW Chapter of GRHS,

Congratulations to you and the members of the GROW Chapter of GRHS on your Chapter's tenth anniversary. Although some of our Chapters have experienced some difficulty in maintaining an active membership, the GROW continues to thrive and grow. We have you and GROW members to thank for that outcome. When a Chapter has long time members such as Jan Haberman, Alice Summers, Jeanette McDermid, Leona Hix, Adi Hartfeil, Arlene Maston, Jan Prunier, and many more that I have not had the honor to meet in person, the Chapter will thrive. Members like you are what have made GRHS a great organization since its creation in 1971.

The best part of my job as President of GRHS is to honor individual members such as those who I referenced above. Unfortunately, I haven't done enough to build bridges with all of the membership. This has been an interesting year to day the least, but all I can do is making up for lost time, thus my Happy Anniversary letter to you and GROW.

My wife and I attended your GRHS Convention. It was extraordinary, everything about it was indicative of a very successful activity. When I say "everything," I include the facilities, meals, program, Kuchen,

opportunity to meet other GRs from other States and even countries.

I would be remiss if I didn't say something about those little bags made by Maxine Daily and Alice Summers and their many helpers. Those were special, especially since hundreds of hours went into sewing and fabricating hundreds of those bags. *Alice, I am sorry that I haven't told you before, but I truly thank you very much!!!!*

Continue doing what you and your fellow members are doing because when Chapters are strong, GRHS is strong. I apologize for not having recognized the success that GROW has had over the past 10 years sooner, but I hope that this marks the initial steps of reconnecting GRHS with GROW and other members. Stay in touch and please continue to keep me informed of your Chapter meetings; I really enjoyed the April 17, 2011 edition.

I would love to sample Nina Schiermeister's baked beans with meat (not so sure about prune bars); Sharon Bell's cabbage rolls; and Harley/Sharon Miller's "Hello Dolly" cake. And, how about Marcine Herinck's Kuchen and cinnamon rolls? Yum!

Keep up the great work and tribute to our dear GH (German Heritage) culture,

Don Ehreth
President, GRHS

Directors & Officers Who Have Served GROW

Directors

2001

Aman, Walter - 2001-2002
Geiszler, Oscar - 2001-2011
Gray, Gayla - 2001-2002
Haas, Roger - 2001-2011
Haberman, Clifford - 2001-2004
Henne, Douglas (Doug) - 2001-2002
Kopp, Leonard - 2001
Rehwalt, Margaret - 2001-2002
Reinke, Cecil - 2001-2002

2002

Haberman, Janice (Jan) - 2002-2011
Helfenstein, James (Jim) - 2002-2003
Schnaible, Roy - 2002-2006
Voeller, Sharon - 2002-2005

Weber, Edward (Ed) - 2002-2005

Weber, Lola - 2002-2003

2003

Daily, Maxine - 2003-2006
Majhor, Robert (Bob) - 2003-2005

2004

Gander, Geraldine (Geri) - 2004-2007

2005

Clark, Charles (Chuck) - 2005-2005
Summers, Alice - 2005-2011

2006

Gibson, Jenice - 2006-2006
Maston, Arlene - 2006-2011
Radtke, Kurt - 2006-2011

Continued on page 6.

GROW 10th Anniversary Special Section

Directors & Officers Who Have Served GROW, cont.

Thatcher, Elizabeth (Betty) - 2006-2006

2007

Hix, Leona - 2007-2011

Mcdermid, Jeanette - 2007-2011

Schiermeister, Ellsworth (Ells) - 2008-2009

2009

Lang, Harold - 2009-2011

2011

Hartfeil, Adolph (Adi) - 2011-

Schiermeister, Ellsworth (Ell) - 2011-

GRHS Representative

Haas, Roger - 2001-2011

Officers

Secretary

Gray, Gayla - 2001-2002

Weber, Ed - 2002-2005

Daily, Maxine - 2005-2006

Mcdermid, Jeanette - 2006-2011

Treasurer

Rehwalt, Margaret - 2001-2002

Voeller, Sharon - 2002-2005

Summers, Alice - 2005-2006

Maston, Arlene - 2006-2011

Hartfeil, Adi - 2011-

2nd Vice President

Radtke, Kurt - 2007-2011

Vice President

Kopp, Leonard - 2001-2001

Helfenstein, Jim - 2002-2002

Schnaible, Roy - 2002-2006

Haberman, Jan - 2006-2011

President

Geiszler, Oscar - 2001-2002

Haas, Roger - 2002-2011

Committee Chairs and Key Contributors

Ancestral Name Ribbons

Joni Jundt (2006-2011)

Board/Picnic Meeting Homes

Roger/Roberta Haas (2001)

Cliff/Jan Haberman (2001-2002)

Oscar/Lorraine Geiszler (2001)

Margaret Rehwalt (2002)

Gayla Gray (2002)

Walter Aman (2002)

Roy/Ilene Schnaible (2003 & 2004)

Lola/Darwin Weber (2005-2006)

Kurt/Jane Radtke (2006)

Alice/Lee Summers (2006-2009)

Calling

Lorraine Geiszler (2001)

Oscar Geiszler (2002-2009)

Jan Haberman (2002-2011)

Ed Weber (2002-2011)

Maxine Daily (2006-2006)

Leona Hix (2007-2011)

Harold Lang (2009-2011)

Car Pooling

Oscar Geiszler (2003-2005)

Glenn Gumeringer (2003-2005)

Robert Majhor (2003-2005)

Coffee

Kurt/Jane Radtke (2007-2008)

John Hix (2009-2011)

Convention Chairs (2006)

Banner: Joanne Pfau

Copier & Security: Steve Geiszler

Entertainment: Vivian Messenger, Glen Gumeringer,

Tim Janzen Family

Equipment: Bob Majhor

Food/Facilities: Roy & Ilene Schnaible, Bob Majhor,

Kurt Radtke, Ell Schiermeister

Graphics & Design: Jan Prunier

Honored Guard: Ell Schiermeister

Hospitality: Pat Schauer

Memorial Services: Harley Miller

Continued on page 7.

GROW 10th Anniversary Special Section

Committee Chairs and Key Contributors, cont.

Programs: Lola Weber
Program Handbook: Ron Schauer
Publicity: Maxine Daily, Jan Prunier, Roger Haas
Raffle Quilt Donor: Alice Summer
Registration: Jan Haberman, Alice Summer,
Kelly Garey, Jan Prunier, Hilde Archer,
Dee Burghardt, Willy Horner, Jane Radtke
Signage: Geri Gander, Lola/Darwin Weber
Tours: Jenice Gibson
Treasurer: Betty Thatcher
Videographers: Earnie Moran, Tim Janzen,
Harley Miller, Dan Ness
Website: Rich Apsenleiter

Database

Susan Baird (2008-2011)

Entertainment

Vivian Messenger (2002-2011)
Anita Weber (2006-2011)
Emter Family Accordionists (2006-2011)

Family Heritage Recipe Book

Jan Prunier (2010)

Fundraising/Sales

Roy Schnaible (2002-2006)
Roger Haas (2002-2011)
Oscar Geiszler (2002-2011)
Geri/Joe Gander (2007)
Catherine Lobb (2008-2011)
Genealogy/Computer Assist
Robert Schauer (2004-2011)

Genealogy:

Susan Baird (2003-2011)
Harold Lang (2006-2011)

Greeter/Hospitality

Jan Haberman (2001-2011)
Sharon Bell (2010-2011)

Hi-Technician

Bob Schauer (2002-2011)
Bob Majhor (2003-2006)

Library

Doris Seibert (2001-2004)
Jim Helfenstein (2001)
Margaret Rehwalt (2001)
Vivian Messenger (2003-2011)
Carrie Lippincott (2003-2006)
Alice Summers (2003-2006)

Evelyn Gatlin (2003-2005)
Glen Gumeringer (2004-2006)
Kurt Radtke (2007-2010)
Jeanette Mcdermid (2007-2011)

Membership

Clifford Haberman (2001-2004)
Geri Gander (2004-2006)
Arlene Maston (2006-2011)

Name Badge

Leona Hix (2007-2011)

Newsletter Contributors

Ed Weber (2004-2011)
Eric Schmaltz (2009-2011)
Harold Lang (2009-2011)
Ron Schauer (2011-

Newsletter Editor

Velma Jesser (2001-2004)
Jan Prunier (2004-2011)

Newsletter Labeler

Sharon Voeller (2003-2006)
Vivian Messenger (2006-2007)
Arlene Maston (2008-2011)

Newsletter Mailing

Alice Summers (2003-2006)
Roger Haas (2007-2011)

Newsletter Printing

Roger Haas (2001-2011)

Obituaries

Sharon Voeller (2001-2004)
Jan Haberman (2005-2011)
Katherine Bell (2007-2011)

Pictorial Grow Family Ancestral Book

Vivian Messenger (2010-2011)

Pictorial Scrapbook

Jan Haberman (2001-2006)
Maxine Daily (2003-2006)
Katherine Bell (2007-2011)

Picnic

Jan Haberman (2002-2011)
Roy Schnaible (2002-2005)
Kurt Radtke (2006-2010)
Roger Haas (2011)

Continued on page 8.

GROW 10th Anniversary Special Section

Committee Chairs and Key Contributors, cont.

Programs

Lola Weber (2001-2003)
Paul Voeller (2004-2006)
Roger Haas (2005-2011)

Raffles

Marcine Herinck (2001-2011)
Jan Haberman (2002-2006)
Ilene Schnaible (2002-2006)
Geri & Joe Gander (2006-2007)
Catherine Lobb (2008-2011)

Refreshments

Roberta Haas (2001-2011)
Marcine Herinck (2001-2011)
Kathryn Stegemeyer (2001)
Ilene Schnaible (2002-2006)
Lorraine Geiszler (2002-2008)
Ann Gumeringer (2002-2006)
Helen Majhor (2003-2004)
Rosalie Schachterle (2004-2011)
Paula Pfau (2005-2005)
Jane Radtke (2006-2011)
Charlotte Bohlman (2008-2010)
Kathleen Carey (2009-2011)
June Larsen (2009-2011)
Ray Nelsen (2010-2011)
Allen & Nancy White (2010-2011)

Roster

Sharon Voeller (2002-2006)
Arlene Maston (2006-2007)
Roger Haas (2008-2011)

Setup

Roger & Roberta Haas 2001-2011
Jan Haberman (2001-2011)
Sharon & Katherine Bell (2007-2011)
Catherine Lobb (2008-2011)

Sunshine

Agnes Herrle (2001-2003)
Amelia Lybarger (2003-2006)
Jan Haberman (2005-2011)
Cathy Lobb (2007-2011)

Videographer

Joni Jundt (2007-2007)

Volunteer Coordinator

Dennis Levi (2003-2003)

Robert Majhor (2003-2003)

Joni Jundt (2006-2006)

Webmaster

Bradlee & Jessica Mertz (2003-2004)
Debra Voeller (2003-2004)
Jan Prunier (2004-2011)

GROW Chapter Meeting Programs & Attendance

2001		23 Feb	Dr Wm Wiest, Reed Prof/Resear	42
18 Aug	Organizing	23 Mar	Doug Jacobs, Ancestral Organ	41
23 Sept	Members Share Ancestry	27 Apr	DVD - "Crosses Of The Plains"	43
28 Oct	Cooking/Baking, Herinck	25 May	Susan Baird, Genealogist	44
9 Dec	Dr. Tim Janzen, Researcher	22 June	Bruno Reule	41
Total 99 - Avg 25		12 July	Picnic - Willamette Park	28
2002		28 Sept	GRHS Convention Reports	30
27 Jan	Dr. Don Miller, Author	26 Oct	Liedertafel Harmonie	70
24 Feb	Robert Schuh, Village Coordinator	16 Nov	Dr Don Miller, Author	45
24 Mar	Dale Wahl, Researcher	Total 421 - Avg 42		
28 Apr	Shirley Nitschke, Author	2004		
23 June	Dale Wahl, Village Coordinator	25 Jan	Marie Krieger, Historian	53
29 Sept	Stan & Helen Nuffer, LDS	22 Feb	Steve Schreiber, Volga Website	50
27 Oct	Mary Axtman, NDSU	28 Mar	Milo Bauder, Researcher	55
24 Nov	Milo Bauder, Author	25 Apr	Kurt Radtke, Historian	31
Total 355 - Avg 44		23 May	Ed Weber, Historian	51
2003				
26 Jan	John Rudnick, Newspapers			

Continued on page 9.

GROW 10th Anniversary Special Section

Chapter Meeting Programs & Attendance, cont.

20 June	German Schools: Peters, Gibson.....	33
3 July	Picnic - Willamette Park	25
26 Sept	Holiday Inn Conv Prep/Facility.....	39
17 Oct	Günthner Hoffmann, Consulate.....	40
21 Nov	Brent Mai, Concordian Librarian	45

Total 422 - Avg 42

2005

23 Jan	DVD - "Heaven Is Our Home"	47
27 Feb	Susan Bair, Genealogists	58
20 Mar	Valerie Ingram, Computer Research	62
24 Apr	Ell Schiermeister, Historian.....	46
22 May	Lola Weber, Ancestral Research	38
26 June	Wine Making: Johnson & Schauer	44
7 Aug	Picnic - Deutsches Haus Gardens	48
25 Sept	GRHS Convention Reports	41
23 Oct	Introducing Ourselves	34
27 Nov	Sally Freeman, Historian/Astor.....	49

Total 467 - Avg 47

2006

23 Jan	Sharon Miller, Luther Store	53
26 Feb	Col Jerry Lauzon, Mt Angel	49
26 Mar	Ron & Pat Schauer, Travelogue	54
23 Apr	Josef & Lilli Fleischmann Winery.....	39
31 May	Picnic: - Kurt & Jane Radtke	28
25 June	Pre-Convention Rally, Holiday Inn.....	41
23 July	Convention Wrap Celebration	32
24 Sept	Convention Reflections.....	24
22 Oct	Lola Weber; Family History	30
19 Nov	Kurt Radtke, German Travels	42

Total 392 - Avg 39

2007

28 Jan	Leroy Kiemele, Chap Travels	54
25 Feb	Susan Baird, Genealogist.....	45
25 Mar	Family History Workshops.....	28
22 Apr	Vivian Messenger & Bob Gang.....	38
25 May	Susan Baird, Genealogist.....	25
24 June	Cathy Lobb & Roger Haas.....	30
26 Aug	Picnic - Deutsches Gardens.....	47
23 Sept	GRHS Convention Reports.....	26
28 Oct	Ed Weber, Historian/Writer	26
18 Nov	Susan Baird, Genealogist.....	31
3 Dec	Conv Appreciation Dinner: Xaviers.....	32

Total 382 - Avg 39

2008

27 Jan	Dr Tim Janzen, DNA Genetic Services	32
24 Feb	Brent Mai, Concordia Univ Librarian	31
30 Mar	Lola Weber, Heirlooms.....	40
27 Apr	Radtke, Stebner, Schiermeister	40
18 May	Verna Porter, Family Odyssey	29
24 June	Roberta Schuh, KRIG Expert.....	39

24 Aug	Picnic - Deutsches Gardens.....	50
28 Sept	GRHS Convention Reports.....	29
19 Oct	Dr Schafer, Pathologist/Chip.....	28
23 Nov	Judith Lenhart, Zimmerman House.....	44

Total 362 - Avg 36

2009

25 Jan	Other Holocausts Speakers	41
22 Feb	Adi & Barb Hartfeil, Genealogist.....	32
22 Mar	Joanne Pfau, German Travels	44
26 Apr	Don Geiszler, N/S Dakota To Lodi.....	35
31 May	Stebner, Radtkes Germ Travels.....	41
28 June	Bob Schauer - Stump Book Ref	38
30 Aug	Picnic - Deutsches Haus Gardens	60
27 Sept	Bell Conv/Janzen Mennonites.....	33
25 Oct	Ell Schiermeister, Horse-Engine	38
22 Nov	Dr Janzen, Mennonite In Russia	33

Total 395 - Avg 40

2010

24 Jan	Kurt Radtke, Hessians Coming.....	34
28 Feb	Bob Gang, Restoring Pictures.....	42
28 Mar	Leona Hix, Grave Witching	36
25 Apr	Adi Hartfeil "Successful Flight"	40
16 May	DVD - "Other Holocausts"	30
27 June	Susan Baird, Hessen Ancestor	38
29 Aug	Picnic: Deutsches Haus Gardens.....	35
26 Sept	Adi Hartfeil, 12 Yr Old Boy To OC.....	28
24 Oct	Ursula Bacon, Shanghai	39
21 Nov	Bruno Reule: Then & Now Bess.....	32

Total -354 Avg 35

2011

23 Jan	DVD "All Earth & Sky"/Baby Pic	50
27 Feb	Hon. Conslr. Günther Hoffmann.....	55
27 Mar	Longview Gen. Pres. Lola Weber.....	50
17 Apr	Fullbright Scholar Ron Vossler.....	62
15 May	Sausage Making, Joanne Pfau.....	47
26 June	Austrian Pres Egbert Kunrath	
28 Aug	10 Yr Celebration & Picnic - Happy Valley Park	
25 Sept	2011 GRHS Convention Reports	
23 Oct	TBA	
20 Nov	TBA	

Aug 2001-Nov 2010

Total 3,649 Avg 39

GROW 10th Anniversary Special Section

GROW Picnic & 10 Year Anniversary Celebration

Happy Valley Park

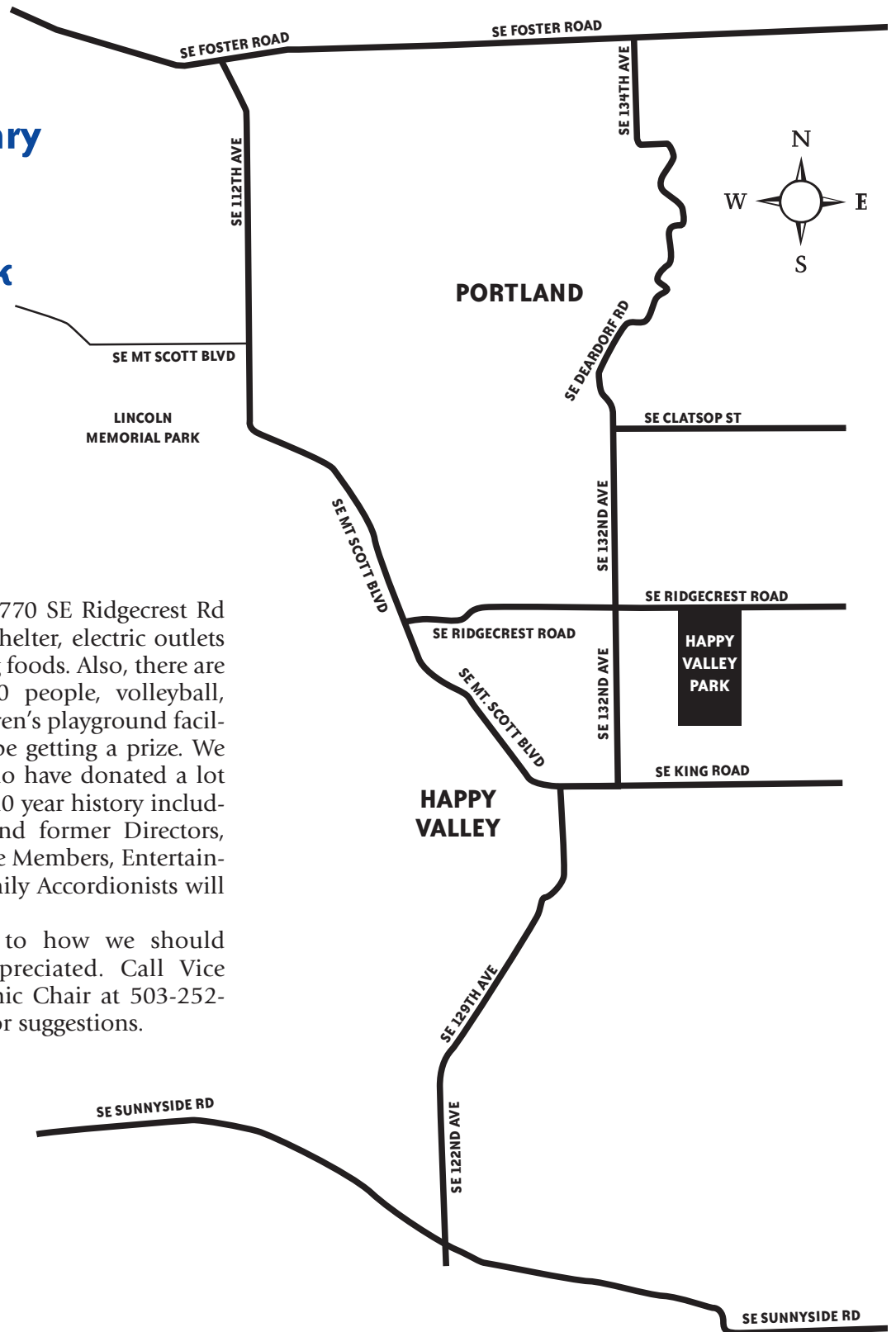
Sunday

August 28

11 am - 3 pm

Happy Valley Park is at 13770 SE Ridgecrest Rd. There will be a covered shelter, electric outlets for making coffee and warming foods. Also, there are toilets, picnic benches for 60 people, volleyball, horseshoes, baseball and children's playground facilities. Everyone attending will be getting a prize. We will be honoring members who have donated a lot of time and talent during our 10 year history including Board Officers, present and former Directors, Program Presenters, Committee Members, Entertainers, etc. Further, the Emter Family Accordionists will be entertaining us with music.

Your ideas and input as to how we should celebrate will be greatly appreciated. Call Vice President, Jan Haberman, Picnic Chair at 503-252-5480 to share your ideas and/or suggestions.



Adi Hartfeil Biography

I was born to German parents, who were certified to be EWZ Germans, while they occupied a farm in the western part of Poland in WWII. They were born in Wolhynien (northwestern part of the Ukraine) and then started our family in Latvia. In 1940 they “traded” their successful Latvian farm for a “free” Polish equivalent farm. In the late winter of 1944/45 my mother fled with the last train from Elsenau (Domeslevic near Posen/Posnan) from the advancing Russian tanks with three older kids and two 2½ year old boy twins (I am the older one) to the Lueneburger Heath region of northern West Germany.

In 1954 we left Germany when our emigration quota had finally reached its designated number for Germans being born in “Russia”. We had to wait nine years after the war for the US permission to immigrate to Oregon City, Oregon. My two older sisters and oldest brother had married in Germany and with their spouses had already made their new start in Oregon. My parents with the last three brothers traveled on one of the last passenger ships to New York and then took the Greyhound bus to Portland. The bus ride was very interesting because we couldn’t speak any English and mainly ordered only bread and milk. All the people stared at my 12-year-old twin brother and me because we were wearing these very German short pants with suspenders.

My other brother who was five years older started working with my dad in the BP Johns Furniture Company in Portland and saved enough money to buy, with a loan from a German acquaintance, a 30 acre farm in Oregon City. I helped on the blackberry farm and worked summer jobs to pay for my college BS degree in Applied Science from PSU in 1964, being the first one in our family to get a college education. I only looked in the Portland area and couldn’t find a high tech job and so went back to PSU to get my high school mathematics teaching credentials.



Adi Hartfeil

In 1965 I started my mathematics teaching career at Roseburg High School where I met my wife who was also starting her career in teaching English. I guess opposites attract each other and I had some good moves on the dance floor. She was good in following all my fancy moves and taught me to be a somewhat better reader of books. She quit teaching to help raise our daughter and son. After seven years of high school mathematics teaching I had to switch jobs because I guess I did not bow down low enough (which is hard for a German to do) for a new high school principal. A fellow Sport-club Germania club member and good friend had a need for a technical, new product evaluation engineer at Tektronix and hired me when I was the only bread winner. Looking back I now realize that Tek was a top notch and wonderful company. The new Wilsonville Tek plant looked like a college campus and that is the way the engineering management ran the company. But after 10 very good years at Tek, the US economy in the early 80’s tanked and I was laid-off as a second level manager.

I now had management skills and plus QA experience and so was then employed by medical device manufacturers, who made portable defibrillators and implanted pacemakers, plus by some other high tech companies. I worked for and got acquainted with US, German and Japanese companies and had to adjust to their unique management styles and culture.

Now I am retired and happy to be away from all the conflicting and stressful working conditions and requirements. Now my main challenge is to be a good Opa and help Barb (Omi) in babysitting our two little energetic young grandkids twice a week while our daughter works. Unfortunately, we don’t get to be Opa and Omi with our granddaughter very much who is in the first grade on the east coast. We travel a lot to visit our other relatives and to see as many wonderful countries and geographical places as time allows.

I keep up with my German heritage and support my mother’s tongue by practicing my German communication skills whenever I have the opportunity. For personal fun, I golf, fish, go camping and boating, and try to watch some international soccer matches when the US or Germany play.

Ell Schiermeister Biography

Ell Schiermeister was born and raised in Hazelton, ND.

When he was 17, he had a summer job moving houses in ND. During that time he met a young man from Germany, Tony Schauer. He and Tony became good friends and decided to go to California as Ell's brother Marvin lived there with his wife. After a short stay, he and Tony moved to Portland, Oregon

as Ell's uncle Fred Jundt lived there with his wife and children. Ell finished high school at Cleveland High.

Ell has many trades. Out of high school, he found a job with a timber company, driving logging truck. In 1956, he had a job with a road construction company, running a large earth mover, building the Banfield Freeway. That fall he met Nina Rice. He had received his draft notice and left for the Army in December of 1956. Home on leave, he and Nina



Ell Schiermeister

were married March 26, 1957. He was transferred to Colorado Springs, Colorado where he and Nina lived until he was deployed to Ulm, Germany.

After returning from military duty, he and Nina settled in Vancouver, Washington where they raised three children. He made his living driving truck and later had his own construction company with his brother Oliver. When the construction went sour due to high interest rates, Ell went back to truck driving. He and Nina have rental properties, which they maintain themselves and he also drives truck one or two days a week.

Ell also donates time to the VFW, doing the final salutes to our veterans who served their country. One of Ell's favorite sayings, "I'm not retired, I'm just tired".

He just had a physical and the doctor told him to keep doing what he is doing as he has such good health. Just keep working.

Helpful Hint from Sharon Bell

To see relative's houses, homesteads, etc. try using Street View from Google Maps.

To get to Street View go to www.maps.google.com Type in the address or town in the search window and press the SEARCH MAPS button.

Once there, if the little man on the zoom control is yellow, then Street View can be used.

Left click on the yellow man, hold and drag him, placing the green circle to the street you want to view from the ground.

In this way I have navigated to several small towns in North Dakota to see some of the houses where I have relatives and to see the old homestead of my great grandparents. Note that addresses may not be exact in street view or in the regular map view. When in map view I like to have it display satellite view.

If the man on the zoom control is not yellow, then Street View does not yet exist for this area. Likewise if as you drag the yellow man, a street doesn't highlight in blue, then that street is not yet in Street View.

It's All Earth & Sky

If you missed the broadcast, you can view the entire program on our Prairie Public On Demand streaming video service.

It's All Earth and Sky, is the sixth documentary in Prairie

Public's series about the legacy of the Germans from Russia. It is a co-production of Prairie Public Broadcasting and the North Dakota State University Libraries.

The following link will take you to the webpage. Type the link in your browser address bar to navigate there. Click on the **On Demand Arrow** and the video will come up on your screen. Click the arrow in the middle of the photo and the video will play.

www.prairiepublic.org/television/local-productions?post=25034



Katherine

GROW Committee Chairs

*Director contact information can be found on this page.

Badges	Leona Hix*
Calling	Dr Harold Lang*
Cataloging	Jeanette McDermid*
Coffee	(503-538-4508) John Hix
Computer Tech	(360-771-1939) Bob Schauer
Entertainment	Ell Schiermeister*
Facility Set-Up	(503-254-2583) Sharon Bell
Family History	(503-698-2449) Susan Baird
Fund Raising/Sales	(503-282-3052) Cathy Lobb
Genealogy	Dr Harold Lang*
Greeting/Hospitality	Jan Haberman*
Library	(503-574-2271) Vivian Messenger
Membership	Adi Hartfeil*
Newsletter	(424-258-1698) Jan Prunier
Obituaries	(541-485-7179) Katherine Bell
Pictorial Scrapbook	Katherine Bell
Programs	Roger Haas*
Refreshments	(503-654-6948) Roberta Haas
Sunshine/Appreciation	(503-282-3052) Cathy Lobb
Translations	(503-518-8181) Kurt Radtke
Website	(425-258-1698) Jan Prunier

Employment Needed

College bound student looking for summer employment. Very flexible, from office work, housework, gardening, yard work, grocery shopping, etc. Have a driver's license. Four years of experience with the German language in high school. Happy, easy-going temperament. Pay negotiable depending on task or job. Please call 503 233 3726 or cell 503-995-6944

Need a hard-working, enthusiastic, and dedicated person with a cheerful disposition to help out this summer and even throughout the year? Continuing college student eagerly looking for work in the SE Portland and Milwaukie area. Willing to do housework (inside & outside), office work, English (or basic German or Spanish) tutoring, babysitting, taking care of pets, etc. Dependable, organized, and thorough. Available Monday-Saturday afternoons through evenings and possibly mornings. Please call (503) 654-6947 or e-mail at sarahcook.oregon@gmail.com

2010-11 GROW Board of Directors

Roger Haas, President/GRHS Director Rep

8618 SE 36th Ave. (503) 659-8248
 Portland, OR 97222 rahaas@haasfamily.us
Term ends: 2013

Jan Haberman, Vice President/ Sunshine Chair & Calling Asst.

8110 SE Madison (503) 252-5480
 Portland, OR 97215 haberman988@msn.com
Term ends: 2011

Jeanette McDermid, Secretary/Library Specialist

327 SE Elliot Ave (503) 666-6939
 Gresham, OR 97080-7726 toadlilyunique@comcast.net
Term ends: 2013

Adi Hartfeil, Treasurer-Membership

4230 S Tera Vista Ct (503) 636-2272
 West Linn, OR 97068 abhartfeil@q.com
Term ends: 2014

Arlene Maston

8202 NE Going St. (503) 255-5493
 Portland, OR 97220-4860 amaston@aol.com
Term ends: 2012

Oscar Geiszler, Fundraising

803 5th Ave. (503) 656-1802
 Oregon City, OR 97045 oscarandlorraine@msn.com
Term ends: 2013

Ell Schiermeister

12010 SE McGillivray (360) 253-2499
 Vancouver, WA 98683
Term ends: 2014

Harold Lang, Membership Recruiter/Calling Chair

410 NE 114th Ave. (503) 251-2948
 Portland, OR 97220 hvlang@msn.com
Term ends: 2012

Leona Koth Hix, Name Badge Chair/Greeter

2704 Haworth Ave. (503) 538-4508
 Newberg, OR 97132-1918 JWHIX@comcast.net
Term ends: 2014

Sharon Bell, Alternate #1 - Set-Up Chair

126 NE 86th Ave. (503) 254-2583
 Portland, OR 97220 bellglen@teleport.com
Term ends: 2011



Maxine Daily, Director Emeritus

In Memory—Clifford Haberman, Director Emeritus

Robert Majhor, Director Emeritus

Ed Weber, Director Emeritus

GROW 2011 Quarterly Calendar

J U L Y 2 0 1 1						
SUN	MON	TUES	WED	THURS	FRI	SAT
					1	2
3	4 <i>Independence Day</i>	5	6	7	8	9
10	11	12	13	14	15	16
17	18	19	20	21	22	23
24	25	26	27	28	29	30
31						
A U G U S T 2 0 1 1						
SUN	MON	TUES	WED	THURS	FRI	SAT
	1	2	3	4	5	6
7	8	9	10	11	12	13
14	15	16	17	18	19	20
21	22	23	24	25	26	27
28 <i>GROW PICNIC</i>	29	30	31			
S E P T E M B E R 2 0 1 1						
SUN	MON	TUES	WED	THURS	FRI	SAT
				1 <i>Newsletter Deadline</i>	2	3
4	5 <i>Labor Day</i>	6	7	8	9	10
11	12	13	14	15	16	17
18	19	20 <i>Board Meeting</i>	21	22	23	24
25 <i>Chapter Meeting</i>	26	27	28	29	30	



Chapter Meetings are held at:
Bethany Lutheran Church Basement
4330 NE 37th Ave., Portland, OR

Doors open at 1 pm

Meeting starts at 2 pm until about 5 pm

From the north take 42nd Avenue to Prescott

From the south take 33rd Avenue to Prescott

From the east at 82nd take Prescott to 37th Avenue then south one block

From the west at MLK Blvd. take Prescott to 37th then south one block

Entrance to the basement is from the south parking lot on Skidmore

Chapter Meetings

NO MEETINGS IN JULY & AUGUST

GROW Picnic & 10 Year Anniversary Celebration
August 28 • 11 am - 3 pm

25 September - GRHS Convention Reports

Fundraising Opportunities— At No Cost To You!!

- Electronic Newsletters. Receive your newsletters via email, and save GROW in postage costs. Thank You!

Other Opportunities to Help...

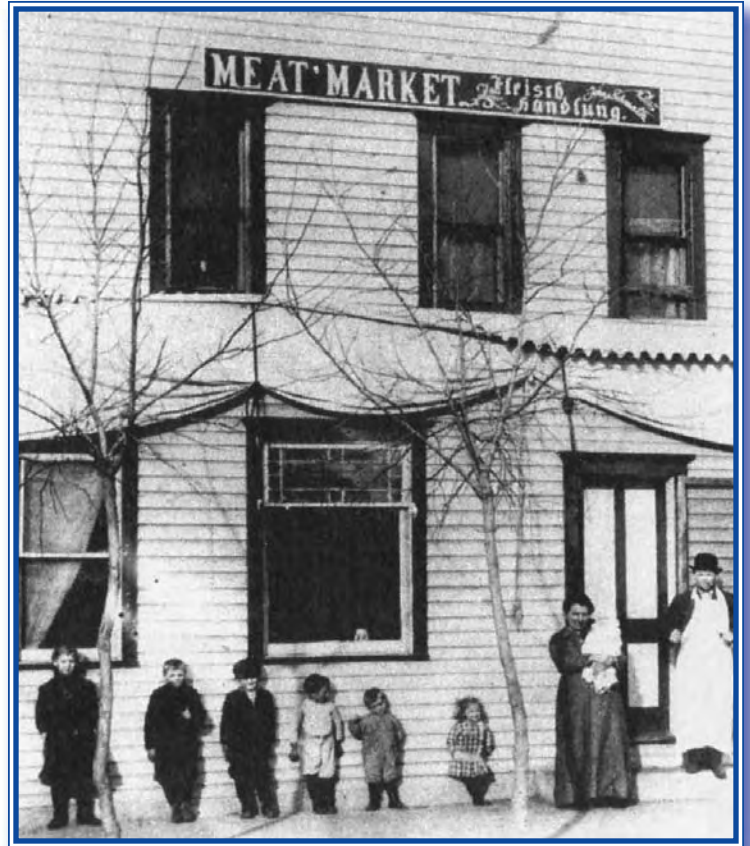
- **Oscar Geiszler** is recycling inkjet and laser cartridges. Bring your empty cartridges to Chapter Meetings or contact Oscar directly. He can also help you receive approximately 50% discount on refilled cartridges.
- Visit **Cathy Lobb** before/after the Chapter Meetings to view the fascinating collection of books, audio CDs, videos, etc. that are available for sale. Also take a look at the tote bags, key chains and magnets, all with the GROW logo.

* **Family Heritage Recipe Book** - \$12.50 at Chapter Meeting or add \$4.00 s/h for mailing. Call 503-659-8248, rahaas@q.com

Historic Photo

An early photo of John and Clara (Bullinger) Schmaltz and their children posing in front of the Meat Market in Strasburg, North Dakota, in 1914. The store opened in 1910 and was sold in 1945. In 1926, John expanded the business with a meat market in Linton, which remained in family hands until 2006.

Photo courtesy of Dr. Eric J. Schmaltz, Alva, OK



GROW Membership Application

Germans from Russia Oregon and Washington



Years of Membership _____ New Renewal

Birth Month (optional) _____ Anniversary Month (optional) _____

Name (please print) _____

Address _____

City _____ State _____ Zip _____

Phone (include area code) _____ Email address _____

Name of ancestral village(s) _____

Family surnames _____

Names of adults in household desiring membership cards _____

Enclosed is my remittance of \$ _____ Membership fees are due annually on January 1.

GROW Newsletter/Operation Donation (minimum \$5.00)

GRHS Membership \$50.00 • GRHS Lifetime Membership \$650.00 (\$130.00 per year)

Make checks payable to GROW - US Currency Only • Mail to: Arlene Maston, 8202 NE Going St., Portland, OR 97220-4860

Please send email updates and address corrections to Arlene Maston - amaston@aol.com

GROW Quarterly Newsletter Deadlines: September 1 • December 1 • March 1 • June 1

All submissions are welcome. If you would like any materials returned, please include a SASE.

Send articles to: jcprunier@comcast.net or by mail at 1218 Pacific Ave., Everett, WA 98201

Resources for Aiding in Your Research

The Oregon AHSGR Chapter Library, 27th-29th NE Liberty St., Portland, OR, at Concordia University is open on the fourth Saturday of the month from 10:00 am to 2:00 pm. Contact Jene Goldhammer at 503-771-5813. It is best to call before coming.

Websites available for research:

AHSGR Library

ahsgr.org

G-R Heritage Collection

lib.ndsu.nodak.edu/grhc

GRHS Library

grhs.org

EESG - East European Genealogical Soc, Inc.

Eegsociety.org

FEEFHS - Fed of E. European Family His Soc

eeffhs.org

LDS Family History Library

familysearch.org

National Genealogical Society

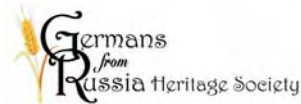
ngsgenealogy.org

NEWSLETTER SUBMISSIONS WELCOMED!

*Please send
articles, photos, stories,
anecdotes, recipes, etc. to:*

Janice Prunier, Editor
1218 Pacific Ave., Everett, WA 98201
jcprunier@comcast.net

*Deadline for next issue is
September 1, 2011.*



Germans from Russia Heritage Society

GROW Chapter

8618 SE 36th Avenue
Portland, OR 97222