



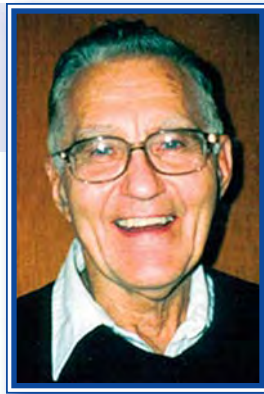
# GROW Quarterly Newsletter

Area Chapter of the Germans from Russia Heritage Society (GRHS)

Volume 9 Issue 3

April - May - June 2010

## Message from the President



**Roger Haas, President**

**G**ROW is invigorated with the spark from the archival records received and other anticipating files to be arriving from Russia regarding our ancestral families. Our eight GRHS Regional Interest Groups (RIGs) are the primary recipients of these procured materials after sending them through the Clearing House and then on to the appropriate RIG spokespersons to file, record, and to be made available to the interested researcher.

The above is one facet for our GROW Family History Researcher that is available to our GROW/GRHS members. Also, the RIGs each have a List Serv. The List Servs are the electronic exchanges of members searching information and those possible experts who may have ready answers. This is a two-way exchange. You may have information on ancestral families and villages for which other inquirers are searching? Some RIG Listservs are more active than others.

At least 827 member applications have been made to the various RIGs. On the active RIGs, it seems daily that some members are getting answers when they had "dead ended" in their search. Yours truly belongs to all eight RIGs and sees results that are amazing. We have at least 22 GROW members currently registered on the eight RIGs. It should be noted however, that you can NOT belong to these RIGs or List Servs without being a GRHS member. Your GRHS password will allow you into the secured (locked) areas. As the cost increases for procuring files and members volunteering extensive time/expertise to making this information available,

it is in the interest to those dues-paying members to not provide the file information to the "free loaders".

Go to your internet and type in GRHS.org, click on Chapters & RIGS, and then select your Ancestral Village Cluster.

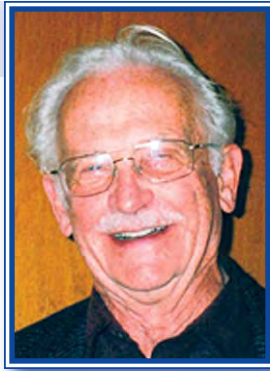
- **BERESAN (BDO)** Spokesperson: Valerie Ingram & List Serv Administrator: Bob Ell;
- **BESSARABIA** Spokesperson: Carolyn Schott & List Serv Administrator: Bob Ell;
- **CRIMEA** Spokesperson: Wanda Hopkins & List Serv Administrator: Debbie Beick;
- **GERMANS to PRUSSIA & POLAND to RUSSIA (GP-PR)** Spokesperson: Tom Stangl & List Serv Administrator: Martin McMahon;
- **GROSLIEBENTAL (GDO)** Spokesperson: Mia Boster & List Serv Administrator: Bob Schauer;
- **HOFFNUNGSTAL (HOP)** Spokesperson: Duane Stabler & List Serv Administrator: Vi Szepesi; ;
- **KHERSON, EKATERINOSLAV, TAURIDA (KET)** Spokesperson: Tim Janzen & List Serv Administrator: Debbie Beick;
- **KUTSCHURGAN** Spokesperson & List Serv Administrator: Dennis Roth.

*Continued on page 2.*

## Inside This Issue

<i>Ed's Corner</i> .....	2
<i>Restoring Family Photos</i> .....	3
<i>Family Stories</i> .....	4-5
<i>2010-2011 Heritage Tours</i> .....	5-6
<i>Historic Photos, Courtesy of Dr. Eric Schmaltz</i> .....	6
<i>Resource Books Translated</i> .....	7
<i>RIGs</i> .....	7-8
<i>Harold Lang Bio</i> .....	8-9
<i>Board of Directors</i> .....	9
<i>Catherine Lobb Bio</i> .....	9, 11
<i>Calendar</i> .....	10
<i>GRHS Essay Contest</i> .....	11
<i>Resources to Aid Research</i> .....	12

## Ed's Corner



Ed Weber

In my last Corner I remarked: "Samuel Morse invented the telegraph and successfully sent a message on May 24, 1844 from Washington DC to Baltimore, Maryland. The telegram said: **What Hath God Wrought**. In 1861 Western Union had a telegraph line that connected the United States from Coast to Coast."

At Christmas 2009, one of the gifts for me was a large book published by The Oxford History of the United States: "**What Hath God Wrought—The Transformation of America, 1815 - 1848**." The book tells the story of the westward expansion of this new nation from the original thirteen states on the Atlantic to the Pacific. The human geography of North America in 1815 included peoples of several races, many languages, and sometimes incompatible aspirations.

The biggest problem facing the government was living up to the upholding the newly adopted US Constitution guaranteeing the Freedom of the individual person. The individual states had two classes of people; those who were free and those who were

slaves, owned by the individuals who were free. The Civil War should have settled the problem with the emancipation declaration freeing the slaves; however discrimination is still with us today.

German heritage people in the Transformation of America in the 1815-1848 years were located in New York, Pennsylvania, Ohio, Indiana, Illinois and Missouri. The people of those years certainly would have been unbelieving about our present instant communication and travel that did not take hours to months of time.

When our ancestors moved from Germany to Russia there were a large number of them that went West to the new World instead of East to Russia. The compelling drive was to get freedom. In the late 1700s Central Europe was plagued with serfdom, wars and religious persecutions.

I have been able to trace the Weber Ancestors going to Russia in 1803. My father escaped Kassel, South Russia in 1910 at age 16 to avoid being conscripted into the Russian Army. He moved to Wishek, North Dakota to join other members of his family who moved earlier. On my mother's side of the family her ancestors, the Bock family originated in Germany, Darmstadt, Rhineland Palatine, going back to 1667. The Bocks immigrated to the United States in 1876 from Dazig, Germany.

That's it from Ed's Corner.

## President's Message, cont.

These are the people who will get you started in your ancestral village research. Michael Miller has a colored laminated map exhibiting each of the RIG Clusters of the Mother and Daughter colonies that can be obtained by going to:  
<http://library.ndsu.edu/grhc/order/maps/map3.html>  
and click on NDSU Libraries

This leads me to share with you that your Life Membership dues will almost with a certainty increase and go up to \$850 from the current \$650 following the 2010 July Convention Membership votes. Further, the proposed plan will require the full payment all at once and not as is the current installment option. May I suggest that you enroll your children, grandchildren, siblings, and friends who may have interest in the Black Sea records, for now or in the future, and enroll them in a Life Membership to save the 30% increase? Likewise, would you please enroll them in our GROW Chapter also for \$5 per year? Thanks!

While we are suggesting the above ideas to aid you in your Family History Search, we are so very pleased to have our own GROW Member/Educator Dr. Harold Lang providing a FREE workshop for persons

searching their roots as Germans from Russia. The program started in January and will continue at least thru April in Portland, OR. Harold has done an excellent job and has had good attendance at each session. For more information, you may want to call Harold at 503-251-2948. We are all volunteers wanting to help you.

Thank you, Roger Haas

### 2010 CONVENTIONS

#### GRHS 40th Annual Convention

July 21-25, 2010 • Bismarck, ND

#### AHSGR 41st Annual Convention

August 1 - 8, 2010 • Lincoln, NE

#### NGS (National Genealogical Society)

April 28 - May 1, 2010 • Salt Lake City, UT  
[www.ngsgenealogy.org/cs/help\\_promote](http://www.ngsgenealogy.org/cs/help_promote)

## Restoring Family Photos

At the February Membership Meeting on Feb. 21, Robert Gang demonstrated techniques for repairing photos and tintypes.

Techniques he covered included:

- Brighten and Contrast
- Cropping
- Adjust color or use B&W
- Remove small flaws
- Use cloning to repair large areas
- Free-hand painting to hide problems or to restore missing detail



Robert Gang

### Robert's Recommendations:

#### EQUIPMENT, SUPPLIES & RESOURCES:

I use the following equipment at home:

- 1) **PC computer** with Pentium IV, 3.00 GHz w/1.0 GB RAM, two 160 GB harddrives, and modem w/cable connection to high speed internet. **HOWEVER...**most of my work was done with a Pentium III, 300 MHz w/ 640 MB RAM and 8 GB HD. Laptops are a Pentium II and a Pentium III
- 2) **Flat bed scanner** – Epson Perfection 3170 Photo which will also scan color slides and negatives.
- 3) **HP Deskjet 952C InkJet printer**- I refill my own black and color cartridges - \$2 and \$5 each
- 4) For computer help, contact Computer Friends in Beaverton: 503-626-2291 or [www.cfriends.com](http://www.cfriends.com)
- 5) **Photo Paper** – glossy gives best and sharpest images. Paper makes a big quality difference.
- 6) **Digital Camera** - 4.0 and 6.0 digital camera. I use to use a film camera, but no more.

#### SOFTWARE PROGRAMS:

Microsoft Picture It! Premium is my favorite program because it is so easy to use and allows you to get good images from very small area of picture. It is no longer available or supported by MS, and will not work with XP with service pack 3 or with Vista. You can buy it on Ebay.

Other good programs are: MS Digital Image Suite, Paint Shop Pro, Print Shop, HP Photo Imaging, Adobe Photoshop Elements. *(Editor's Note: I use the full version of Photoshop for photo restoration, however, Photoshop Elements is my pick for the home user. It's inexpensive, easy to use and very powerful. There is a 30-day trial version available at [www.adobe.com](http://www.adobe.com), so you can try before you buy.)*

#### Four ways to get photos into computer:

1. E-mail. Photos received as attachments to email
2. Scan in photos
3. Regular film camera – get CD in place of prints when film is processed.
4. Digital camera – input directly into computer



**Example 1: The contrast was increased and repairs were made using the cloning tool.**



**Example 2: This tintype was repaired using the cloning tool and free hand painting.**

Pictures are stored as files in a directory in your computer. Do NOT store pictures in the application. If you are using Windows 98 or Windows XP, your computer has two directories: MY DOCUMENTS and MY PICTURES. Choose MY PICTURES. Set up separate directories for each family or group of pictures. This keeps your pictures separate from whatever picture program or genealogy program you may use in the future, and can be used in any program. This also allows you to choose the best program to use with a specific picture task.

There are several file extensions available, but I recommend storing all pictures as ".jpg" Two reasons: .jpg uses less harddrive space than many of the others, and it is the best choice (or only choice) for emailing your pictures to other family members. *Editor's note: When you save your files as .jpg, choose the highest quality setting (10-12).*

**CRITICAL #1 RULE: Save original image and each major change as separate files so you can always go back.** *Editor's note: To help keep files organized, I add revision number to the file name... ie: "name\_original.jpg"; "name\_rev1.jpg"; "name\_final.jpg" I copy the file I'm going to work on to a working directory in MY PICTURES and leave the original files intact.*

## Family Stories

*submitted by Sharon Bell*

These stories were written by my grand aunt Sue (Schatz) McDonald. She was the sister of my mother's (Katherine Bell, GROW member) mother, Ruth (Schatz)(Long) Granby. Sue and Ruth grew up in the house in the picture. When their parents retired from farming and moved to town the house lay empty for many years. It was torn down a few years ago, but this picture was taken by Katherine Bell in the 1990's.

## Sailing on Ship From Russia

*by Sue Schatz McDonald circa 1975*

In 1901, Mom and her first husband Albert Bohle came from Russia by ship, the "Maria Theresa", to Ellis Island, New York. How strange this new land and language must have been. From New York they took a train to South Dakota near Eureka. Ma told us how frightened she was looking out of the train window, telephone poles speeding by and she would flinch and scream to the amusement and laughter of other seasoned travelers. From Eureka, S.D., they started out in a convoy of covered wagons about March.

It was a wet, cold trip to N.D. south of Mercer to file their home stead claim. They hurriedly built a one room sod shack. Mom said the spring rains dripped down inside, also mud and lizards. Mr. Bohle developed T.B. so mom had to do a man's work. To seal the cracks she used mud and fresh cow manure 'till they could build a larger, more comfortable home in the summer. The prairie was strange and frightening to her, neighbors being not too near. They had one milk cow, one chicken, a couple of horses to start out this new life. One day her chicken was lost in the tall grass so mom walking, crying, and despairing searched and called for the chicken until she found it.

Mr. Bohle died leaving mother with two children and one on the way.

What the women must have gone through in this harsh land. Only this week I heard a very young wife complain because she had to spend an hour at the Laundromat. She said "from now on, my husband has to take his turn at this too."

In 1905 mother married Henry Schatz and moved to a farm south of Picardville. He sold his homestead to buy this farm and wooden frame house. Here I was born, also the rest of the children. The farm is still owned by my brothers Ed and Hank who only recently died of cancer in Laredo, Texas. Here is where my prairie life started in the year 1909. How lucky we were to have had this experience. Mother sold her Bohle homestead and bought a home in McClusky in 1930 when they retired from farming when my brothers took over the old farm.



What courage it took to leave their homes in Ukrainian Russia where the climate was mild enough to grow grapes, fruit, etc., then find themselves in a land of rotting, grassy, snowy hills, not a tree in sight. Land of hail, tornados, wind and beautiful gentle rains and sunshine.

## Clearing Land

*by Sue Schatz McDonald circa 1975*

What a cold, miserable job digging rocks and picking them. The older boys dug them up with a crow bar. Us 4-5-6 year olds picked, put them on a stone boat and they were hauled to a large pile. Some times we took a lunch out and stayed all day. Cold wind chilling bones, hands chapped 'till they bled. Every year rocks were removed. It seemed as though the very devil drove them up from beneath the ground to torture us. Now, 65 some years later the same fields still are cleared of rock.

One very cold fall day, Shorty and I sneaked off on hands and knees through the tall grass. Then ran on home to warm our cold bodies. How scared we were of our father. We were sure he'd thrash us. To our surprise he never said a word. I'm still grateful to him for pretending he didn't see us sneak home.

Rocks are buried in a deep hole now, so it seemed strange on my visit home not seeing these long rock piles. Skunks and wild animals built homes in them.

*Continued on page 5.*

## Family Stories, cont.

Even wild bees used them. Hearing the humming rock pile one time, Shorty and I were certain the pile was bewitched until we discovered the bees.

We children took care of the acre or more of potatoes, weeding, hoeing and picking potato bugs. A nasty job, but we had lot of food in winter; spuds and meat were our daily diet. Some days bugs were so prolific we had to pick the stinking things three times a day. Each of us had a bucket to put the bugs off plants in pail, then carried home and drowned in kerosene. In the fall spuds were dug up and stored in the cellar before frost hit. It too was a long, slow, dirty job as we used forks or shovel to dig each hill. How good though to know you had food for ten people to last 'till spring. Stored in the cellar were big pumpkins, rutabagas, onions, huge cabbage heads, carrots.

In the cellar were also several tons of lignite coal from the Wilton mines. If you ran out of coal in winter it was a long, cold drive in snow and blizzard to the mines; men slept here over night and came home the next day. You never knew if the men would come home alive or would freeze to death in drifting, swirling snow. So it was a welcome sight when they made it safely back. Now, most farmers use butane, electricity or other fuels, haul it home in short time or have it delivered. How times have changed!

Pulling corn off stalks, throwing them into the wagon was quite a chore too for young children, then haul the load home into the granary. In early years, at husking time, husks were carefully saved for straw ticks or bedding. With a feather tick over this it made a comfortable bead. Husking corn was a rather pleasant job, mom and we kids sitting around



in the bins looking for the prettiest Indian corn. When corn husks were scarce, mother stuffed the ticks with clean, pleasant smelling straw. Mother cooked huge kettles of dried shelled corn in winter; we ate it like candy, so guess pigs didn't get too much of it. It was supposed to be for pigs.

I liked winter much better than summer in spite of the cold. How beautiful to play out on the ice or snow on bright moon light nights; it was awesome white—almost like day. Exciting to watch the Northern Lights playing in the sky, shifting like fingers one minute, then like a vast curtain the next. You could almost hear them crackle on very cold nights. Some times they appeared like a glowing curtain drawn across the northern sky by invisible hands. This spectacular display of nature is beyond description. The sun dogs on each side of the sun was a sight. We didn't know what caused them then.

## 2010-2011 Heritage Tours

### Heritage Tours to Ukraine/Crimea/Moldova

If you are planning to visit your ancestral German villages in the Black Sea region, SCHNEIDER LLC has space available on the 2011 May and September tours to Ukraine.

In addition to visiting the tour members' ancestral villages, a tour itinerary generally includes attractions such as an art gallery, a theater performance, an archive, museums, city tours in Odessa, Nikolaev, and Yalta, as well as palaces and sight seeing along the beautiful southern Crimean seacoast. Van transportation and excellent Ukrainian guides and interpreters are provided for the tours.

It is also possible to schedule a private family tour,

or an individual tour, with an itinerary arranged according to the dates requested, and the ancestral villages desired to visit.

To inquire about a SCHNEIDER LLC Tour, contact Robert R. Schneider, Manager, 1649 N. 3rd St., Spearfish, SD, 57783; or email: [rschneider@rushmore.com](mailto:rschneider@rushmore.com); or call: 605-722-7712; or, for information about tours, click on the SCHNEIDER LLC website: <http://members.rushmore.com/~ukrainetours>.

*Continued on page 6.*

## 2010-2011 Heritage Tours, cont.

### Volhynian Village Adventure Tours

2010 Tour Dates: August 8-19 2010

by Don Miller

Recently I again returned from another wonderfully successful Volhynian Village Adventure Tour. Because of our limited group size and restricted area of coverage, we had ample time to visit all the desired villages in a leisurely fashion. In addition, we spent a day sightseeing in Kiev, several days in the State Archives in Zhitomir, including the former Party archives, plenty of time interacting with villagers, visiting historical Bolshevik sites in Zhitomir, took a cruise down the Dneiper River and enjoyed a lovely farewell dinner of Georgian food. We had many findings in the archives and in the villages. In the past one tour member even found a first cousin on the road to his village. It was incredible!

#### PRIMARY PACKAGE

The primary package includes visiting all the villages of your choice within the area roughly from Zhitomir to Rovno, touring the historic cities of Kiev

and Zhitomir, doing research in the archives and immersing yourself in Ukrainian culture. Additional options: You can rent a car with an English-speaking guide to re-visit any villages or do a side trip. You can also make a stopover in Europe to visit family and friends, or do additional research and touring. Any departure from the regular itinerary is at your own expense.

#### LAND ARRANGEMENTS

In Kiev you will stay in a nice hotel within walking distance to Independence Square. While touring the villages, you will stay in a hotel in the center of the city of Zhitomir (Pop. 400,000), where all the action is or in a private (rented) home. Though the accommodations are pretty modest, they are clean and substantially better than in many other Third World countries.

For more information, go to the website: [www.volhynia.org](http://www.volhynia.org), call Don at 503-647-5858, email him at: [dnmiller@whiz.to](mailto:dnmiller@whiz.to) or write him at 12814 NW Bishop Rd., Hillsboro, OR 97124.

## Historic Photos



Famous photographs of the “Long Trek” (Grosser Treck) of ethnic Germans from Ukraine to Nazi-occupied Poland (the Warthegau). As the war turned on them, the Nazi authorities evacuated about 350,000 Ukrainian Germans to the west between late 1943 and mid-1944. Emma (Schmalz) Rieger (1918-2008), the daughter of Stalin victim Barbara Schmalz (1899-1937), and her family from the village of Kandel survived this ordeal in the spring of 1944. It proved to be a difficult race to stay ahead of the rapidly advancing Soviet armies. Shortly before his death, John Schmalz (1879-1951) in North Dakota sponsored Emma and her family to come to the United States as Displaced Persons (DPs).



Photos courtesy of Dr. Eric J. Schmalz, Alva, OK

## Resource Books Translated

Pastor Horst Gutsche was one of the main Banquet Speakers at our 2006 GRHS International Convention in Portland. He has spent many months translating German Russian heritage books and now has them available for sale. All books are 8x11½ inches and the cost includes shipping and handling.



Pastor Horst Gutsche

### *The History of the Community of Tarutino*

by Wilhelm Mutschall (Bessarabia)

\$65.00 - 200 pages

with lots of photos and illustrations

A history from 1814 to 1934. This belongs in every home with roots in Tarutino.

### *The History of the Diocese of Tyraspol*

(German Roman Catholic in the Russian Empire)

by Bishop Joseph Kessler

\$65.00 - 207 pages

Six or seven photos of bishops, the seminary and cathedral.

A very hot item among German Russian Catholics. It describes life in the colonies and cities from the 1760s to about 1922. Printed in 1930.

### *Alt Elft - The Homeland in Photos and Pictures*

(Bessarabia)

\$65.00 - 170 pages

Lots of good essays and information on Alt Elft and lists of emigrants to various parts of the world.

Important for Alt as well as Neu Elfters. It gives great insight into the cultural and economic achievements in a very strongly Christian Evangelical Lutheran village. Printed in 1972.

### *Galka, A German Settlement on the Volga*

\$40.00 - 70 pages - no photos

This book was written in 1911 and was a doctoral thesis which gives the exact condition of the settlement of Galka and its customs and traditions. This belongs in every Volga German home. There is once again an Evangelical Lutheran congregation in Galka

### *The History of Neu Sarata* (Bessarabia)

\$25.00 - 28 pages with an address list of people from there both in Germany and in North America. I visited there and in Tarutino and Alt Elft in 1997.

*A List of Germans from Russia Congregations in the USA* - \$65.00 - 200 pages no photos - it took four full months to compile and can be used to increase GRHS and AHSGR membership

My address is:

Horst W. Gutsche,  
4908 - 43A Street, Barrhead  
Alberta T7N 1J5 Canada  
Tel.: 780 674 3944

Please contact me at [hwg1923@hotmail.com](mailto:hwg1923@hotmail.com) if you wish to purchase any of them.

## Regional Interest Groups

Membership is your gateway to success with your ancestral family research. GROW brings you monthly events and ideas of all sorts thru the Monthly Chapter Meeting Summaries and its quarterly GROW Newsletter for \$5 per year. Can you believe that unusual bargain price for membership?? GRHS further brings history and stories of your ancestral towns, villages and so much more in its quarterly Heritage Review that \$50 per year is a token of what you can gain. Do not delay and enroll your family and friends in GROW & GRHS. Please find an application on page 11 of this newsletter.

Please note in your current Heritage Review on pages 42-45, the continued new information received from South Russia or the Ukraine region regarding files received/receiving maybe your ancestors?? Check under Translations, EWZ database of 256,000 individuals, Obituaries of 250,000, Archive Acquisitions, etc. to get an idea as to what is out there for you.

Now to really put wheels under your wagon, look at the list of the RIG Spokespersons and List Serv Administrators below who the above information of files, films is funneled through. You will find below the Region/Village Spokesperson to assist you with information that may help you with YOUR ROOTS. Then enjoy getting more answers to your queries by getting on your Area/Village List Serv and visiting with all its members; nearly 800! It is as easy as eating. List your interest, your problem, your question, what you are "stuck on" and someone will answer you (similar to Facebook). Be patient and know that this is another vehicle to get help from the experts and maybe you have information that others

---

Continued on page 8.

## Regional Interest Groups, cont.

are also interested. You can have fun and success. Please report your results to the GROW Newsletter Editor for the next edition. Thank You.

### GRHS RIGs (Regional Interest Groups)

#### BERESAN (BDO)

Spokesperson: Valerie Ingram,  
valri@comcast.net; 509-467-7572  
List Serv Administrator: Bob Ell, bobell@shaw.ca;  
250-335-3421

#### BESSARABIA

Spokesperson: Carolyn Schott,  
cgschott@comcast.net; 206-362-0181  
List Serv Administrator: Bob Ell, bobell@shaw.ca;  
250-335-3421

#### CRIMEA

Spokesperson: Wanda Hopkins,  
whhopkins@comcast.net; 509-926-6951  
List Serv Administrator: Debbie Beick,  
beektabeek@comcast.net; 509-464-1666

#### GERMANS to PRUSSIA & POLAND to RUSSIA (GP-PR)

Spokesperson: Tom Stangl,  
tstanglsr@aol.com; 703-723-4692  
List Serv Administrator: Martin McMahon,  
marty@mcmahon.com; 253-864-0337

#### GROSLIEBENTAL (GDO)

Spokesperson: Mia Boster,  
miab@wavecable.com; 360-452-1528  
List Serv Administrator: Bob Schauer;  
bschaue@pacifier.com; 360-687-1905

#### HOFFNUNGSTAL (HOP)

Spokesperson: Duane Stabler,  
destabler@integraonline.com;  
952-447-8654  
List Serv Administrator: Vi Szepesi;  
vjszepo@shaw.ca; 403-271-7545

#### KHERSON, EKATERINOSLAV, TAURIDA (KET)

Spokesperson: Tim Janzen  
tjanzen@comcast.net; 503-761-8781  
List Serv Administrator: Debbie Beick;  
beektabeek@comcast.net; 509-464-1666

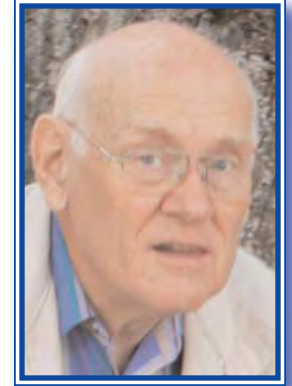
#### KUTSCHURGAN

Spokesperson & List Serv Administrator:  
Dennis Roth, deroth100@msn.com; 425-235-5559

Compiled by:

Roger Haas, rahaas@haasfamily.us, 503-659-8248

## Harold Lang Bio



Harold Lang

### HAROLD HARVEY LANG

Born: January 4, 1932,  
Harvey, North Dakota  
(no siblings)

#### PARENTS:

**Father:** Gottlieb Lang, born in Kassel, Odessa, South Russia, came to US in 1902 at the age 13 with his parents Valentin Lang and Katherine Reich, who homestead near Gackle, ND. Descendent of Paul Lang who migrated from Poland/Prussia to Kassel in 1814

**Mother:** Emma Specht, born in Wisconsin. Her parents immigrated to the US from Forchtenberg, Wuerttemberg, Germany in 1886. The Spechts had lived in the Forchtenberg area for several hundred years.

#### Home:

Lived at Harvey, ND until the age of 11  
Moved to Caldwell, ID in 1943  
Moved to Medford, OR in 1947  
Left home in 1954

#### FAMILY:

**Wife:** Violet Stewart, Married August 28 1955, Nashville TN

**Children:** Robert Lang, Engineer, now Product Manager, Hewlett Packard, Boise, ID

Sharon (Lang) Howard, Occupational Therapist, Portland, OR

Gerald Lang, Mail Clerk, Navy Facility, Orlando, FL

#### Education:

BA - Physics, Walla Walla University, College Place, WA, 1953

BSE - Mechanical Engineering, Walla Walla University, College Place, WA, 1954

MSE - Mechanical Engineering, The University of Michigan, Ann Arbor, MI, 1967

PhD - Mechanical Engineering, The University of Michigan, Ann Arbor, MI, 1977

#### Employment:

Rocketdyne Division North American Aviation (now Rockwell) Chatsworth, CA, 1954-1956, Engineer - Research, Tested rocket engines. Lived in Northridge and Van Nuys, CA

US Army, Specialist-5 - Served in radioisotope lab (nuclear medicine) at Brook Army Hospital, Fort, Sam Houston, San Antonio, TX 1956-1958

Westinghouse Electric Co., Bettis Atomic Power Lab, Pittsburgh, PA 1958-1963, Engineer, Developed

Continued on page 9.



## Catherine Lobb Bio

Catherine Lobb was born in Portland and raised in Tigard. Then moved back to Portland after she married Jerry. They have been married for 57 years and have three children and three grandsons.



**Cathy Lobb**

She's the third of seven children, her mother is of German/Russian heritage and father is Irish/English origins. Cathy's maternal ancestral family consists of Malsams, Ochs and Hartmanns. Her great-great-great grandfather, Johann Malsam left Geinhausen German in 1804 at the age of 37 with his wife Otilie, 29 and five young sons for Russia. They were part of the successful colonization of the village of Kleinliebental, a Catholic village. Over the years, the Malsams are documented in the history of the town. Martin Malsam was horse herdsman, considered a very responsible position. Peter Malsam was on the building committee for the new St. Wendelin's Church which was completed in 1866. The statue of the Blessed Virgin Mary, which came from Paris and cost 400 rubles was a gift from Georg Malsam. In 1900 Georg was the mayor of Kleinliebental.

In 1885, after Czar Alexander II revoked the rights and privileges promised by Catherine II and Alexander I, my grandfather Ludwig Malsam, age 22 and single left for America. I have been unable to locate the ship he came on so don't know his port of entry. He, however, headed for South Dakota as other had before him. There he met and married Margaret Ochs, Cathy's grandmother. They later moved to

*Continued on page 11.*

## 2008-09 GROW Board of Directors

### **Roger Haas, President/GRHS Director Rep**

8618 SE 36th Ave. (503) 659-8248  
Portland, OR 97222 rahaas@haasfamily.us  
*Term ends: 2010*

### **Jan Haberman, 1st Vice President**

8110 SE Madison (503) 252-5480  
Portland, OR 97215 haberman988@msn.com  
*Term ends: 2011*

### **Kurt Radtke, 2nd Vice President, Programs**

20023 Quinalt Dr. (503) 518-8181  
Oregon City, OR 970458 *Term ends: 2012*

### **Jeanette McDermid, Secretary/Library Specialist**

327 SE Elliot Ave (503) 666-6939  
Gresham, OR 97080-7726 toadlilyunique@comcast.net  
*Term ends: 2010*

### **Arlene Maston, Treasurer - Membership**

8202 NE Going St. (503) 255-5493  
Portland, OR 97220-4860 amaston@aol.com  
*Term ends: 2012*

### **Oscar Geiszler, Fundraising**

803 5th Ave. (503) 656-1802  
Oregon City, OR 97045 oscarandlorraine@msn.com  
*Term ends: 2010*

### **Alice Summers, Social Chair**

130 SE 155th Place (503) 775-9929  
Portland, OR 97233 sewsum4u@msn.com  
*Term ends: 2011*

### **Harold Lang, Membership Recruiter**

410 NE 114th Ave. (503) 251-2948  
Portland, OR 97220 hvlang@msn.com  
*Term ends: 2012*

### **Leona Koth Hix, Name Badge Chair/Greeter**

2704 Haworth Ave. (503) 538-4508  
Newberg, OR 97132-1918 JWHIX@comcast.net  
*Term ends: 2011*

### **Eli Schiermeister, Alternate #1**

12010 SE McGillivray (360) 253-2499  
Vancouver, WA 98683 *Term ends: 2010*

### **Sharon Bell, Alternate #2 - Set-Up Chair**

126 NE 86th Ave. (503) 254-2583  
Portland, OR 97220 bellglen@teleport.com  
*Term ends: 2010*

### **Charlotte Bohlman, Alternate #3 - Kitchen Asst.**

3747 SE 154th Ave. (503) 761-8767  
Portland, OR 97236 *Term ends: 2010*



**Maxine Daily, Director Emeritus**  
**Clifford Haberman, Director Emeritus**  
**Robert Majhor, Director Emeritus**  
**Ed Weber, Director Emeritus**

## Harold Lang Bio, cont.

techniques for inspecting parts used in nuclear reactors. Lived in McKeesport, PA

Andrews University, Berrien Springs, MI 1963-1999, Professor of Engineering and Chair Engineering Department. Helped develop a College of Technology, an Architecture program and an Engineering program. Chaired the Undergraduate Council for five years and headed two university wide regional accreditation self studies. Lived in Berrien Springs, MI

Retired 1999 as Professor of Engineering Emeritus, Andrews University.

Moved to Portland, OR, December, 2004

# GROW 2010 Quarterly Calendar

A P R I L 2 0 1 0						
SUN	MON	TUES	WED	THURS	FRI	SAT
				1	2	3
4 Easter Sunday	5	6	7	8	9	10
11	12	13	14	15	16	17
18	19	20 Board Meeting	21	22	23	24
25 Chapter Meeting	26	27	28	29	30	

M A Y 2 0 1 0						
SUN	MON	TUES	WED	THURS	FRI	SAT
						1
2	3	4	5	6	7	8
9 Mother's Day	10	11 Board Meeting	12	13	14	15
16 Chapter Meeting	17	18	19	20	21	22
23	24	25	26	27	28	29
30	31 Memorial Day					

J U N E 2 0 1 0						
SUN	MON	TUES	WED	THURS	FRI	SAT
		1	2	3	4	5
	Newsletter Deadline					
6 Father's Day	7	8	9	10	11	12
13	14	15	16	17	18	19
20	21	22 Board Meeting	23	24	25	26
27 Chapter Meeting	28	29	30			



**Chapter Meetings are held at:  
Deutches Haus**

**7901 SE Division, Portland, OR**

**Doors open at 1:00 pm**

**Meeting starts at 2:00 pm until about 5:00 pm**

**Coming from I-205 South take Exit 19 Ramp and turn West on Division St., then turn left and go to 7901.**

**Coming from I-205 North take Exit 19 Ramp onto Division St. Go West on Division to 7901.**

## Chapter Meetings

**28 March** - Witching for Burial Graves by Leona Hix

**25 April** - Adi Hartfeil, Successful Russian Flight & Annual Elections

**16 May** - Other Holocausts

**27 June** - Genealogist, Susan Baird

## Fundraising Opportunities— At No Cost To You!!

- Electronic Newsletters. Receive your newsletters via email, and save GROW in postage costs. Thank You!
- Albertsons Preferred Savings Cards - Contact **Roger Haas** for more information. Thank You!

### Other Opportunities to Help...

- **Oscar Geiszler** is recycling inkjet and laser cartridges. Bring your empty cartridges to Chapter Meetings or contact Oscar directly. He can also help you receive approximately 50% discount on refilled cartridges.
- Visit **Cathy Lobb** before/after the Chapter Meetings to view the fascinating collection of books, audio CDs, videos, etc. that are available for sale. Also take a look at the tote bags, key chains and magnets, all with the GROW logo.

## Catherine Lobb Bio, cont.

North Dakota and eventually to Tualatin, OR. They had 12 children, only two of whom were boys. Research shows that Margaret Ochs came on the ship *Elbe* with her family when she was 18 years old. Her mother was a Hartmann and that was a brick wall for many years until Pius Waldman in Kansas sent Cathy the Hartmann ancestry and there she was. Cathy said, "How wonderful."

Her husband's ancestors consist of Lobb, Ryder, Sullivan and Hickey. Their countries of origin were England and Ireland. Cathy said they have quite a bit of information on these families after they arrived in America, but little prior to that time. There are several brick walls there.

Before she got involved in genealogy, she spent several years doing counted cross-stitch as a hobby.

Cathy was introduced to GROW a few years ago by Geri Gander, a cousin by marriage, and she has met others who have Ochs and Malsams in their families.

Cathy is currently the Sunshine Lady, sending out sympathy, thinking of you and get well cards to members and their families with notes of well-

wishes and encouragement. She is also in charge of book and raffle sales. Cathy says, "This is a great group and I enjoy being part of it."



**2010 Pride in Your Heritage  
GRHS Essay Contest**

Sponsored by Germans From Russia Heritage Society

GRHS Essay Contest Theme  
**"Germany/Russia/Americas...  
Giant Steppes Toward Freedom"**

GO TO  
<http://www.grhs.org/chapter/grow/index.html>  
FOR CONTEST RULES AND ENTRY FORM



## GROW Membership Application

### Germans from Russia Oregon and Washington



Years of Membership \_\_\_\_\_  New  Renewal

Birth Month (optional) \_\_\_\_\_ Anniversary Month (optional) \_\_\_\_\_

Name (please print) \_\_\_\_\_

Address \_\_\_\_\_

City \_\_\_\_\_ State \_\_\_\_\_ Zip \_\_\_\_\_

Phone (include area code) \_\_\_\_\_ Email address \_\_\_\_\_

Name of ancestral village(s) \_\_\_\_\_

Family surnames \_\_\_\_\_

Names of adults in household desiring membership cards \_\_\_\_\_

Enclosed is my remittance of \$ \_\_\_\_\_ Membership fees are due annually on January 1.

#### GROW Newsletter/Operation Donation (minimum \$5.00)

GRHS Membership \$40.00 • GRHS Lifetime Membership \$650.00 (\$130.00 per year)

**Make checks payable to GROW - US Currency Only • Mail to: Arlene Maston, 8202 NE Going St., Portland, OR 97220-4860**

Please send email updates and address corrections to Arlene Maston - [amaston@aol.com](mailto:amaston@aol.com)

#### GROW Quarterly Newsletter Deadlines: September 1 • December 1 • March 1 • June 1

All submissions are welcome. If you would like any materials returned, please include a SASE.

Send articles to: [icprunier@comcast.net](mailto:icprunier@comcast.net) or by mail at 1218 Pacific Ave., Everett, WA 98201

## Resources for Aiding in Your Research

The Oregon AHSGR Chapter Library, 27th-29th NE Liberty St., Portland, OR, at Concordia University is open on the fourth Saturday of the month from 10:00 am to 2:00 pm. Contact Jene Goldhammer at 503-771-5813. It is best to call before coming.

### Websites available for research:

AHSGR Library

ahsgr.org

G-R Heritage Collection

lib.ndsu.nodak.edu/grhc

GRHS Library

grhs.org

EEGS - East European Genealogical Soc, Inc.

Eegsociety.org

FEEFHS - Fed of E. European Family His Soc

eeffhs.org

LDS Family History Library

familysearch.org

National Genealogical Society

ngsgenealogy.org

# NEWSLETTER SUBMISSIONS WELCOMED!

*Please send  
articles, photos, stories,  
anecdotes, recipes, etc. to:*

**Janice Prunier, Editor**

**1218 Pacific Ave., Everett, WA 98201**

**jcprunier@comcast.net**

*Deadline for next issue is June 1, 2010.*



Germans from Russia Heritage Society

### **GROW Chapter**

8618 SE 36th Avenue

Portland, OR 97222