



# GROW Quarterly Newsletter

Area Chapter of the Germans from Russia Heritage Society (GRHS)

Volume 8 Issue 3

April - May - June 2009

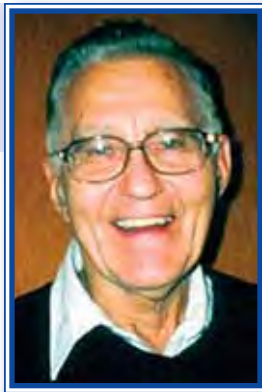
## Message from the President

As we have had a historic snowy winter, we have had some significant Chapter meetings with excellent presenters and good attendance.

Our library is open again with a better indexing system and more books. Jeanette McDermid and Kurt Radtke have given many volunteer hours. Many thanks! We need more space and shelves, but with the adjacent PCC indicating their desire to purchase the Deutsche Haus properties, our needed accommodations may not occur real soon.

After having the beautiful Royal Purple GROW Logo Chapter Vests for about five years, the Board and membership has indicated an interest to create and wear a GROW Logo T-shirt to promote the Chapter when going to the store, shopping or other casual occasions. It could also invite dialog as to our ethnicity, genealogy and you name it. It is not every day you see someone wearing a German from Russia T-shirt. If you are interested in a T-shirt, call Arlene Maston, at 503-255-5493

The Albertsons Community Partnership has been a cooperative program with Valley View Evangelical Church for more than seven years. Albertsons has infused new life of this generous fundraiser in "giving back to youth One Cart at a time" by abolishing the original card and relinking all participating organizations to the Preferred Savings Card (PSC). It does not cost the enrollee a penny, but pays rebates of up to 4¢ per dollar purchased at the Albertsons



Roger Haas, President

store. GROW has earned in excess of \$1,000.00 and has relinked its members and enrolled additional members. Any interested person with a PSC number which is found under the bar code is eligible. You can contact yours truly at 503-659-8248, if you wish to participate and support GROW. Thanks!

Elections will be held in April and three (3) Board positions are open. Your participation is invited and you can nominate yourself or others whom you know would wish to serve. "New brooms sweep clean" and "fresh blood provides more vitality". All standing committees can use helping hands and/or new leadership. What is your talent and expertise that you would like to apply and/or support your Chapter?

You will get this Newsletter around April Fool's day, but don't joke or trick. Just show your talent, knowledge for your ancestral family, and preserving your heritage. Thank you.

Ours is a great Chapter because you are member. Think positive and you'll be positive.

Roger

## Inside This Issue

<i>Ed's Corner</i> .....	2
<i>Germans from Russia in Oklahoma</i> .....	3-4
<i>In Remembrance</i> .....	4
<i>Surname Clues</i> .....	6
<i>Sunshine News</i> .....	6
<i>In Remembrance</i> .....	7-8
<i>Board of Directors</i> .....	8
<i>Resources on the Internet</i> .....	9
<i>Calendar</i> .....	10

## Ed's Corner

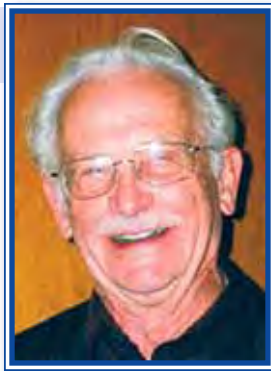
I was reminiscing about my past military service and now I'm going to relate a New Year story of a big cross-roads event in my life.

In January 1946 I was discharged as a soldier of the US Army while I was in Germany and became a civilian working for the next six months in the Office of the Chief of Staff for the US Third Army at Bad Tolz, Germany. This lasted for three months when the Third Army Headquarters was moved to Heidelberg, Germany and the Headquarters of Third Army took over the Headquarters of the US Seventh Army. The Seventh Army became the Occupation Army in Germany. My Civil Service employment ended in July and I was then shipped back home to continue my education at the University of Washington in Seattle.

The transition from an enlisted person in the Army to a civil service employee of the same Army with a military rank of an officer came as a big surprise. I still wore an Army uniform, however all the brass insignias of an enlisted person were removed; instead cloth insignia of a civilian was sewn onto the lapels and covers of the uniform. We were allowed wearing our last shoulder patch. It took about a month to convince the "spit and polish" Third Army MP gate guards to recognize that we did not rate a salute and didn't need to return the salute and to overcome a three year reflex action about saluting.

The biggest change in the transition came with my lifestyle. As an enlisted person at my last duty station I lived in barracks that once housed the German guards at the Concentration Camp, Dachau. I slept on a straw filled mattress, lived out of a barracks bag and used my mess kit for meals served in the enlisted person mess hall. As a civilian I reported to work at Third Army Headquarters where my living quarters became a large room in a German civilian resort hotel. The room had two double beds complete with sheets, steam heat and maid service. Civilians ate at the Officer's Mess and upon entering the dining room you reported to the desk, picked up your linen napkin, ordered your main dish from a menu, were escorted to your table that had a white linen tablecloth, the flat ware was sterling silver and your food was served on china. For dinner you were served a glass of wine to go with your main dish and you were given a cigar. Of course at each dinner there also was a live string trio to provide dinner music.

During my last four months of Army service I was in the southern part of Germany and witnessed the ruins of Germany and the thousands of Displaced Persons,



Ed Weber

German and slave laborers, walking on the roads trying to find some way to get to their homes. My new civilian job would give new insight into Displaced Persons.

My new job was to serve as a file clerk. Now a file clerk's job is about as low entry position you can find in Government or corporate office work. I soon found out why the new job called for Officer status and security clearance.

One other former Army enlisted person and I did work as file clerks in a small office with three file cabinets that comprised the files, most were classified Secret, for the Commanding General, Third Army. We had to read all the files so that when the Commanding General asked about some of the correspondence or directives he had read that concerned a problem he was now working on, we would have to retrieve the file for his use. A large portion of the files dealt with policy procedures demanded by the Russian Government. Not only did the Russians demand industrial machines and tools but also wanted the US Government to use the Army to round up Displaced Persons from Russia and Russian Controlled areas and ship them to Russia. Of course German scientists and scholars were also on the Russian lists. The United States also did some recruiting of German Scientist especially in our Rocket and Atomic Energy Programs. Werner Von Braun is perhaps the most successful German we acquired. The United States recruiting was a little different than the Russian slavery method. Under United Nations direction the Russians wanted the Displaced Person rounded up, put in cattle cars and sent to Russia. Many of them shipped directly to Siberia.

My tour of Civil Service work as a file clerk made me aware of why the US Army called this Russian plan of reparations and repatriation of Displaced Persons, "Operation Keelhaul." At the end of World War II Operation Keelhaul moved three million Russians, against their will, back to the Soviet Union.

That's it from Ed's Corner.



Kurt Radtke is a good German translator, although not professional, he will do it free for a donation that he will gift to GROW as a fundraiser.

His address is: Kurt Radtke, 20023 Quinalt Dr.,  
Oregon City, OR 97045, 503-518-8181

# A Short History of Germans from Russia in Oklahoma

by Dr. Eric J. Schmaltz,  
Northwestern Oklahoma State  
University in Alva



Dr. Eric J. Schmaltz

As I approach my fifth year at Northwestern Oklahoma State University, I am only beginning to understand and appreciate better the history and many contributions of various immigrant groups to the Southern Plains. I wish to

relate here a brief history of how the Germans from Russia came to my adopted state of Oklahoma.

Between 1763 and 1862, starting with Tsarina Catherine the Great (1762-1796), the expanding Russian Empire invited tens of thousands of foreign settlers for two primary reasons. First, Russia wanted to cultivate wide areas of virgin lands and introduce agriculture into the region in order to develop the economy. Second, Russia desired that these new settlers on the imperial frontiers would provide a protective buffer against rival states and various nomadic Asian peoples. Russian government agents and promoters went abroad to encourage immigration, offering people economic incentives and promising special political privileges for such “colonists.”

Germans from Central Europe were among those who heard Russia’s call, concentrating their settlements in the Volga and Black Sea regions. Ethnic Germans lived as productive, loyal, and privileged subjects within the empire. After initial struggles, they achieved and enjoyed a good measure of local self-government and relative prosperity. However, new government policies began to change their status in the country. Behind these transformations was Tsar Alexander II’s (1855-1881) sincere desire to reform his sprawling empire. He introduced sweeping changes intended to revitalize the Russian peasantry and the surrounding countryside and to unify his many subject peoples. By doing so, however, the tsar also had to remove in the course of the 1860s and 1870s the ethnic Germans’ cherished privileges such as local self-government and exemption from military service.

By the late nineteenth century, “Russification” policies under Tsar Alexander III (1881-1894) further distressed the empire’s “immigrant-colonists.” Russia’s German minority expressed growing con-

cern with the rise of Russian nationalism and anti-German sentiment. These fears combined with the problem of acute land hunger, which resulted from overpopulation and more restrictive laws on land purchases for non-Russians. These growing political and socio-economic pressures prompted a large migration of tens of thousands of Germans from all parts of Russia to North and South America in the half century following 1870. By the late nineteenth century, the great U.S. railroad companies also conducted sweeping advertising campaigns abroad to entice East Europeans to set their stakes on the American prairies.

The Dakotas, Nebraska, and Kansas reminded German-Russians of the Russian steppes. Often Germans from Russia, especially Mennonites, sent out advance scouts to survey prospective lands for purchase. As the remaining lands opened up by the 1862 Homestead Act began to close, the plains of western Oklahoma beckoned these people from the realm of the tsars. Land hunger drove them southward into Kansas and the Indian Territory in the 1880s, 1890s, and 1900s, including the Cherokee Outlet in September 1893 in the northwestern part of what became Oklahoma.

According to the 1920 U.S. Census, more than 120,000 Germans from Russia (or more than 300,000 if counting the second generation) lived in the United States. Oklahoma, the former Indian Territory, achieved statehood in 1907. More than 10,000 Germans from Russia lived in Oklahoma by 1920 (counting the second generation), many of them coming from Russia’s Volga region. At this time, more than 4,000 of these Russian immigrants in Oklahoma included Mennonites, while other German groups from Ukraine and Volhynia also settled in the new state. Today, their descendants run into the hundreds of thousands and have become an integral part of the region and the country.

The counties of Blaine, Ellis, Kingfisher, Major, Noble, Washita, and Woodward in Oklahoma all experienced a significant German-Russian influx, including the communities of Arnett, Corn, Fairview, Meno, Shattuck, and Woodward. The Germans from Russia made significant contributions to the emergence and growth of the wheat and grain production segment of Oklahoma’s agricultural industry. Further, it should be noted that the Mennonites

---

*Continued on page 4.*

## A Short History of Germans from Russia in Oklahoma, cont.

introduced the hardy Russian (Turkey) red winter wheat to the Great Plains. Many communities in northwest Oklahoma have realized tremendous benefits from the accomplishments of the Germans from Russia. Their culture, religious practices, and work ethic have brought prosperity and opportunity to the Southern Plains.

### SOURCES:

Census Indexes of Volga Germans in America  
(<http://www.webbitt.com/volga2/census.htm>)

The Center for Volga German Studies at Concordia University,  
Portland, Oregon (<http://cvgs.cu-portland.edu>)

Adam Giesinger, *From Catherine to Khrushchev: The Story of  
Russia's Germans* (Lincoln, Nebraska: American Historical  
Society of Germans from Russia, 1974)

Douglas Hale, *The Germans from Russia in Oklahoma*  
(Norman: University of Oklahoma, 1980)

Fred C. Koch, *The Volga Germans in Russia and the Americas,  
from 1763 to the Present* (University Park and London:  
The Pennsylvania State University Press, 1977)

Oklahoma Historical Society's Encyclopedia of Oklahoma  
History and Culture: Germans from Russia  
(<http://digital.library.okstate.edu/encyclopedia/entries/G/GE008.html>)

Richard Sallet, *Russian-German Settlements in the United States*,  
trans. Lavern J. Rippley and Armand Bauer  
(Fargo: North Dakota Institute for Regional Studies, 1974).

## In Remembrance

### Emma (Schauer) Weisser

March 15, 1914 - March 13, 2009

Roger Haas' mother's only living sister Emma SCHAUER Weisser died, 13 Mar 2009, Wausau, WI, two days before her 95th birthday. She was born in rural McPherson County, SD, (address Ashley, ND), 15 Mar 1914.

Her husband, Gideon Weisser of 50 years died in 1986. They had one son, Charles Weisser, retired school teacher, living in the summer at Wausau, WI and in the winter at Peoria, AZ.

Spring  
Seminar



April 18, 2009  
8 am to 4 pm

Hosted by the Genealogical Forum of Oregon

**Larry Jensen**  
German Research Authority

Author of *A Genealogical Handbook of German Research*. Accredited Genealogist, Manager of the International Reference Unit at the Family History Library in Salt Lake City, Utah. He has over 35 years of experience in German genealogical research and has lectured extensively on German family research throughout the United States and Canada.

### Seminar Topics:

- Determining Places of Origin of Immigrant Ancestors
- Use of Maps and Atlases in German Research
- Understanding German Jurisdictions
- Sources Used in Resolving German Research Problems

### Seminar Features:

- Book Vendor
- Genealogical Treasures
- Other Genealogical Societies
- GFO Surplus Book Sale

**Milwaukie Elks Lodge**  
13121 SE McLoughlin Blvd., Milwaukie, OR  
Registration information at our website:  
[www.gfo.org](http://www.gfo.org)



**April 2009**

# **Kochen und Backen**

## ***Cooking and Baking Classes***

The German American Society is proud to offer unique cooking and baking classes.

Classes are held at Deutsches Haus, 7091 SE Division St., Portland, OR 97206

503-775-1585 • <http://germanamerican.org/koch.htm>

**Thursday, April 2 • 6-9 pm**  
**EASTER BREADS/SWEET BREADS**

Learn how to make Easter braids and a variety of small rolls with Edgar Lösch of Freesen Artisan Bakery

**Thursday, April 16 • 6-9 pm**  
**DANISH DOUGH (PLUNDERTEIG)**

This course will teach you the basics of making Danish dough. Learn the composition of the dough, lamination and how to assemble the pastry with Edgar Lösch of Freesen Artisan Bakery

**Saturday, April 25 • 1-4 pm**  
**STRUDEL**

Baken mit Gerda

**Thursday, April 30 • 6-9 pm**  
**SAVORY TARTS**

Savory cheesecake and bacon tart with Edgar Lösch of Freesen Artisan Bakery



Please mail this registration form with check for payment of \$30 per class per person to:

**German American Society of Portland c/o: Kochvergrüßen**  
**7901 SE Division St., Portland, OR 97206**

Name:	Phone:
Name:	Email Address:
Address:	Amount:
Course Date(s) and Title(s):	

# Surname Clues

*Note: Article is courtesy of New Mexico Chapter of GRHS Newsletter, vol. 5 issue 5, Velma Jesser, Editor.*

Extracted from *The Encyclopedia of German-American Genealogical Research* (Clifford Neal Smith, 1976)

*[Editor's Note: I've selected only surname information specifically related to southern Germany as this is the area where most of our ancestors lived, and the selections are by no means comprehensive. The information was posted on the Baden-Württemberg Listserv by Celia Smith (19 Nov 2001).]*

**bach, bacher** - bach means pond; used in southwestern German names derived from places (Sulzbach, Auerbach); add an -er in personal names (Sulzbacher, Auerbacher)

**berg, berger** - berg means hill; used in southern Germany; in personal names becomes berger (Miltenberger, Altenberger)

**burg, burger** - burg means fortress; used in place names throughout Germany (Hamburg, Coburg); personal surnames add the -er (Hamburger, Coburger)

**er** - suffix often added to southern German place names to create surnames (Straussburger, Weisberger, Eillinger, Dörrenbecher)

**hammer** - a Bavarian variation of the more common -heimer (Bodenhammer)

**heim, heimer** - common place name suffix in southwestern Germany becoming heimer in personal names (Flörsheim becomes Flörscheimer, Heppenheim becomes Heppenheimer)

**hofer, höfer/hoefer** - a southern German suffix; hofer is the more common

**in** - a feminine ending on any surname; particularly common in 18th Century documents (Müllerin, Schmidtin); indicates a woman, usually married; also used for unmarried women indicating "daughter of." (Genealogists should eliminate or ignore this ending.)

**Ingen, inger** - a Swabian place name suffix typical of Württemberg and Baden; in personal names becomes -inger (Zäahringen becomes Zähringer)

**kofer** - a Bavarian personal name suffix (Hüttenkofer)

**le** - a diminutive form typical in Baden (Merkle, Bürkle, Eberle); suffix used in 75% of the Württemberg and Hohenzollern personal names (Bauerle, Mayerle, Schwämmle)

**leiter, leitner, leutner** - Bavarian derivations from Leite or a cliff; used alone or as a suffix

**ler** - a Bavarian suffix (Hitler, Büchler) maier, mayer - a prefix and suffix in Bavaria and Württemberg and always spelled with an -a (Steinmaier, Katzenmaier, Stegmayer)

**mann** - a wide-spread German suffix; no specific geographic origin

**moos, mooser, moser** - a Bavarian place name suffix; an -er added for surnames (Entmoos becomes Entmooser)

**ner** - a Bavarian and Austrian personal name suffix (Hubner, Mautner)

**owski** - a Polish surname suffix (Many thousands of Germans had real Polish surnames, particularly in Upper Silesia, a mining area.)

**P, p** - In Bavaria, P often replaces B (Brücker becomes Prücker and Pannebecher becomes Pannepecher) professional names - common in all parts of Germany (Doktor, Glaser, Schuhmacher, Schmidt)

**reuth, reuther, reut** - Bavarian place name suffixes; add -reuther in personal names (Bayreuth becomes Bayreuther)

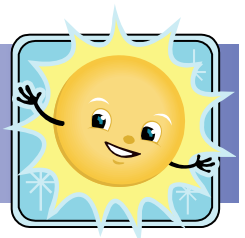
**ried, rieder** - Bavarian and Swabian place name suffix which becomes rieder in surnames (Bernried becomes Bernrieder)


**schmid** - the common form of the "Smith" surname in Württemberg

**schmidt** - frequently used in Hessen

## Sunshine News

by Cathy Lobb



 ur prayers and best wishes go out to John Hix, Maxine Daily and Cliff Haberman. Cliff has been getting hospice care in the home since February.

The GROW family wishes all of you good health and happiness.

## In Remembrance

Roweland was my Uncle Cyril Jacob and Ruth Hestor's son born out of wedlock, who was put up for adoption at birth. Four years ago when he was diagnosed with cancer he had his adoption records opened to learn who his natural parents were. I met Roweland and his wife Virginia last February and gave them copies of our family heritage. My sisters Carol and Therese and myself went to Memorial.

—Vic Jacobs

### Roweland D. Anderson

July 23, 1939 - December 20, 2008

Service: January 10, 2008

Roweland Anderson passed away at his home on Dec. 20, 2008 with his family by his side after a four year battle with pancreatic cancer. He was born on July 23, 1939 in Portland, OR. Roweland was adopted into the family of Marvin and Rowenette Anderson of Tillamook, Oregon. He grew up in Portland and Tillamook. He graduated from Tillamook High School in 1957.

He attended Northwest Nazarene College in Nampa, Idaho from 1957 to 1963, obtaining a degree in education. While at NNC he met and married his wife, Virginia.

Roweland taught in Moses Lake, WA for four years. In 1967, he began teaching in Camas where he taught for 25 years. He was active in the education association and served as president twice. He earned a Master's Degree from the University of Portland and his administrative certificate from Central Washington State College.

Roweland was always someone who loved new adventures: challenges, places, and people. His hobbies included hunting, fishing, oil painting, woodworking, gardening, camping, traveling and volunteering with the Boy Scouts.

Throughout all of Roweland's life, his faith in God was evident. He served on church boards, taught adult Sunday school classes, and even led services on camping trips.

Roweland and Virginia had three children: Carole, Kirt, and Douglas Marlo who died shortly after birth. His children, their spouses Steve and Melissa, and six wonderful grandchildren, Jacob, Evan, Andy, Dean, Grace, and Adam, brought Roweland much happiness and pride.

A highlight of the last few years was to meet his birth family. In 2000 Roweland had the privilege of meeting his birth mother and three half-siblings. In 2008 he met some of the family of his birth father.

He is survived by his wife Virginia, two children, six grandchildren, step-mother Alma Anderson, sib-

lings Marvelina Bennett, Darlene Bone, and Robert Anderson, birth mother Ruth Cross and her daughters Gerry and Susie, and nine half-siblings from his birth father.

Roweland's Memorial Service will be held at Camas Church of the Nazarene, 2204 NE Birch, Camas, WA on January 10, 2009 at 1 PM. Memorial Contributions can be made in his memory to the Camas Education Foundation, 1919 NE lone Street, Camas, WA 98607 or to Nazarene Compassionate Ministries, 17001 Prairie Star Parkway, Lenexa, KS 66220. To send condolences or to sign the online guest book visit [www.straubsfuneralhome.com](http://www.straubsfuneralhome.com).

---

### Robert Leslie Goldhammer

November 12, 1954 - January 9, 2009

Published in *The Oregonian*, Monday, January 12, 2009

A service will be at 1 p.m. Tuesday, Jan. 13, 2009, in Omega Funeral & Cremation Service for Robert Leslie Goldhammer, who died Jan. 9 at age 54.

Robert Leslie Goldhammer was born Nov. 20, 1954, in Portland, where he was raised. He was a carpenter who lived in Louisiana for several years.

Survivors include his sons, Christopher and Kevin; mother, Jene; brothers, Richard Goldhammer, Eddie Lamkin, Jackson Goldhammer and Dr. Timm Goldhammer.

Remembrances to Sisters of Providence Foundation. Arrangements by Omega.

---

### Twila (Ball) Jacobs

September 18, 1923 - February 2, 2009

Twila Mardell Ball was born in Columbus, Kansas on September 18, 1923, to her adoring parents Marvin Myrl and Mary Adeline (Guy) Ball.

On October 15, 1949, Twila gave her heart and hand in marriage to Mr Basil Joseph Jacobs.

In addition to raising her family, Twila was also owner and bookkeeper of Jacobs' Heating and Air Conditioning.

Twila was predeceased by her husband Basil and her son Greg Jacobs.

Twila is survived by her daughter, Dana Jacobs; her sons, Brent Jacobs, Mark Jacobs, Brad Jacobs; plus eight grandchildren, Noelle Dennis, Amanda Jacobs, Nicholas Jacobs, Elizabeth Jacobs, Austin Jacobs, Molly Jacobs, Tyler Jacobs and Sam Jacobs.

The family has requested that in lieu of flowers remembrances be sent to the Jacobs' Memorial Fund at Central Catholic High School in Portland, Oregon.

Submitted by: Victor F. Jacobs of Tillamook, Oregon.

# In Remembrance

## Lois Jean (Jacobs) Chism

May 25, 1937 - December 3, 2008

My older sister Lois Jean [Jacobs] Chism, 71, died December 3, 2008, at the Rangely District Hospital in Rangely, Colorado.

Lois was born May 25, 1937, in Tillamook, Oregon, one of 16 children born to Herman B. and Dorothy E. [Chance] Jacobs. She was raised in Tillamook area and attended the Riverdale and Sacred Heart Grade Schools there, and she graduated from the Nestucca Union High School in 1954, in Cloverdale, Oregon.

In 1964, she and her first husband Ron Branham with their five children moved to Rangely, Colorado, where she worked as a waitress at Eddy's Hotel and Cafe. And in 1967, she with her second husband Don Chism purchased the Rangely Laundry and operated it for many years.

After some traveling Chism went back to work for the Big Burger, buying the drive-in in 1984 and changing the name to Chism's Drive-In. The Chism family operated the drive-in until 1997 when they sold it and she worked briefly for Max's Pizza and Pinyon Seed Bakery until she retired to be with her family and grandchildren.

A devout Catholic, Chism was a member of the St. Ignatius Catholic Church as well as the VFW Auxiliary and was a former member of the "Over The Hill Gang" snowmobiling club and a CB radio club.

Survivors include four children Roni Branham of Loveland, WY, Michael [and Barbi] Chism of Rangely, Tavanne Rae [and Bob] Burch of Craig, and Denise Lovins of Rangely, CO, and 12 grand and great-grand children. And 12 brothers and sisters: Jim, Carol, Don, Phil, R. Elaine, Ray, Vic, M. Therese, Myra, Ruth, Steve and Barb, all living in Oregon and Washington.

Lois was preceded in death by her son Gerald Wayne Chism; two brothers Bernard and Gerald: one sister, Madelon as well as her parents.

[Lois Chism's grandfather Barnhardt "Ben" Jacob and great-grandparents Vincenz and Walburga Jacob immigrated to America from the Selz Colony in 1892 to Pittsburg, Kansas, and they moved to Tillamook, Oregon in 1896.]

Submitted by: Victor F. Jacobs of Tillamook, Oregon.

## 2008-09 GROW Board of Directors

### Roger Haas, President/Liaison

8618 SE 36th Ave. (503) 659-8248  
Portland, OR 97222 rahaas@haasfamily.us  
Term ends: 2010

### Jan Haberman, 1st Vice President

8110 SE Madison (503) 252-5480  
Portland, OR 97215 haberman988@msn.com  
Term ends: 2011

### Kurt Radtke, 2nd Vice President, Programs

20023 Quinalt Dr. (503) 518-8181  
Oregon City, OR 970458  
Term ends: 2009

### Jeanette McDermid, Secretary

327 SE Elliot Ave (503) 666-6939  
Gresham, OR 97080-7726 toadlilyunique@comcast.net  
Term ends: 2010

### Arlene Maston, Treasurer - Membership

8202 NE Going St. (503) 255-5493  
Portland, OR 97220-4860 amaston@aol.com  
Term ends: 2009

### Oscar Geiszler, Fundraising

803 5th Ave (503) 656-1802  
Oregon City, OR 97045 oscarandlorraine@msn.com  
Term ends: 2010

### Alice Summers, Social Chair

130 SE 155th Place (503) 775-9929  
Portland, OR 97233 sewsum4u@msn.com  
Term ends: 2011

### Eli Schiermeister, Membership Recruiter

12010 SE McGillivray (360) 253-2499  
Vancouver, WA 98683  
Term ends: 2009

### Leona Koth Hix, Name Badge Chair/Greeter

2704 Haworth Ave. (503) 538-4508  
Newberg, OR 97132-1918 JWHIX@comcast.net  
Term ends: 2011

### Charlotte Bohlman, Alternate #1 - Greeter

3747 SE 154th Ave. (503) 761-8767  
Portland, OR 97236

### Sharon Bell, Alternate #2 - Set-Up Chair

126 NE 86th Ave. (503) 254-2583  
Portland, OR 97220 bellglen@teleport.com



*Maxine Daily, Director Emeritus*  
*Clifford Haberman, Director Emeritus*  
*Robert Majhor, Director Emeritus*  
*Ed Weber, Director Emeritus*



# Resources on the Internet

*Note: Article is courtesy of New Mexico Chapter of GRHS Newsletter, vol. 5 issue 5, Velma Jessor, Editor.*

All websites begin with <http://www>.

**Adobe Acrobat Reader** Use this FREE software to download newsletters and other valuable information from millions of other sites

[adobe.com/products/acrobat/readstep2.html](http://adobe.com/products/acrobat/readstep2.html)

**Wikipedia Warning** The Wikipedia website is a wonderful resource with a wealth of information, including information relevant to our German-from-Russia heritage. However, anyone can contribute information to post there so errors may exist. As always, verify any information that you take from the Internet with a reliable PRIMARY source of information.

**Archaic Medical Terms** Antiquus Morbus gives a collection of archaic medical terms and their old and modern definitions. If you've found unfamiliar terms on mortality lists, certificates of death, church death records, or other documents from the 19th century and earlier, this site will help.

[antiquusmorbus.com](http://antiquusmorbus.com)

**NEW! 1881 Canadian Census** A new online database includes digitized images of original census records from 1881. Data includes name, age, country/province of birth, nationality, religion, and occupation.

[collectionscanada.gc.ca/databases/census-1881/index-e.html](http://collectionscanada.gc.ca/databases/census-1881/index-e.html)

**Castle Garden Passenger Lists** If your ancestors arrived before Ellis Island was established (before 1892), check these passenger lists.

[castlegarden.org](http://castlegarden.org)

**Deutsche Dienststelle** Check to see if your ancestors were in the German Wehrmacht in WWII

[dd-wast.javabase.de/controle.htm](http://dd-wast.javabase.de/controle.htm)

**Germans to America** The Goethe Institute sponsors a 4-DVD series about Germans who left Germany and assimilated into the American culture, originally targeted for European audiences.

[GermansInAmerica.org](http://GermansInAmerica.org)

**Deutsches Historisches Museum** View the website of the German Historical Museum in English, a wealth of German information

[dhm.de/ENGLISH/index.html](http://dhm.de/ENGLISH/index.html)

**Historical Maps** Find over 500,000 maps taken from atlases and books, over half of them before 1900.

[newberry.org/collections/mapoverview.html](http://newberry.org/collections/mapoverview.html)

**NEW! Argentinian Volga Germans** Interesting information posted by the Centro Argentino Cultural Wolgadeutsche (CACW) center about G-R life in Argentina. (Click the English option near the top of the page when you open the site)

[cacw.com.ar](http://cacw.com.ar)

**Canton of the Volga German ASSR** Maps and articles about G-R history in this Canton. Website is in Russian language but includes English and German information.

[pallasowka.ru/history\\_pallasowka\\_language.html](http://pallasowka.ru/history_pallasowka_language.html)

**German Life** This is an excellent magazine with articles about current-day life in Germany as well as historical accounts and often genealogical information. [Editor's Note: I've subscribed to this magazine for several years and enjoy its content.]

[germanlife.com](http://germanlife.com)

**Hear the Word!** Have you ever had a word that you didn't know how to pronounce? Take that word/phrase to this site and hear it pronounced correctly. Select the language, type in the foreign word, click on Say It! and you get to hear and learn how to say the word correctly.

[us.mg1.mail.yahoo.com/dc/launch?.rand=80ifaf4b0pljm](http://us.mg1.mail.yahoo.com/dc/launch?.rand=80ifaf4b0pljm)

**Family Stories** The mission of StoryCorps is to honor and celebrate one another's lives through listening. Conversations are recorded on a free CD to share and is preserved in the Library of Congress. It's one of the largest oral history projects of its kind. Your story matters so go to this website and preserve your family story.

[storycorps.net](http://storycorps.net)

**Russian Roots** Find links to Russian archives to help you in researching Russian roots

[mtu-net.ru/rrr/russia.htm](http://mtu-net.ru/rrr/russia.htm)

**International Institute of Social History** provides links to Russian archives

[iisg.nl/~abb/](http://iisg.nl/~abb/)

**Russian Military** Join this mailing list to post comments and/or questions

[archiver.rootsweb.com/th/index/russian-military](http://archiver.rootsweb.com/th/index/russian-military)



# GROW 2009 Quarterly Calendar

A P R I L 2 0 0 9						
SUN	MON	TUES	WED	THURS	FRI	SAT
			1	2	3	4
5	6	7	8	9	10	11
12	13	14	15	16	17	18
19	20	21 Board Meeting	22	23	24	25
26 Chapter Meeting	27	28	29	30		
M A Y 2 0 0 9						
SUN	MON	TUES	WED	THURS	FRI	SAT
					1	2
3	4	5	6	7	8	9
10	11	12	13	14	15	16
17	18	19	20	21	22	23
24	25 Memorial Day	26 Board Meeting	27	28	29	30
31 Chapter Meeting						
J U N E 2 0 0 9						
SUN	MON	TUES	WED	THURS	FRI	SAT
	1	2	3	4	5	6
Newsletter Deadline	7	8	9	10	11	12
	13	14	15	16	17	18
	19	20	21	22	23	24
	25	26	27	28	29	30
Chapter Meeting						



**Chapter Meetings are held at:  
Deutches Haus**

**7901 SE Division, Portland, OR  
Doors open at 1:00 pm**

**Meeting starts at 2:00 pm until about 5:00 pm**

**Coming from I-205 South take Exit 19 Ramp and  
turn West on Division St.,  
then turn left and go to 7901.**

**Coming from I-205 North take Exit 19 Ramp onto  
Division St. Go West on Division to 7901.**

## Chapter Meetings

**26 April** - Don Geizler, Lodi Germans from Russa & More

**31 May** - Arnold Stebner & Kurt Radtke will be sharing their German & Ukrainian Travelogue to their ancestral villages that they will be visiting in April and May.

**28 June** - Librarian & Linguist Sergei (Ser) Kozlov

## Fundraising Opportunities— At No Cost To You!!

- Electronic Newsletters. Receive your newsletters via email, and save GROW in postage costs. Thank You!
- Albertsons Preferred Savings Cards - Contact **Roger Haas** for more information. Thank You!

### Other Opportunities to Help...

- **Oscar Geizler** is recycling inkjet and laser cartridges. Bring your empty cartridges to Chapter Meetings or contact Oscar directly. He can also help you receive approximately 50% discount on refilled cartridges.
- Visit **Cathy Lobb** before/after the Chapter Meetings to view the fascinating collection of books, audio CDs, videos, etc. that are available for sale. Also take a look at the tote bags, key chains and magnets, all with the GROW logo.

# GROW FUNDRAISER

GROW has partnered with Valley View Evangelical Church (VV) since 18 Dec 2001 and has earned

**\$1293.76 TOTAL FUNDS!**

Shop at Albertsons and Earn Money for GROW at

**NO COST TO YOU!**



All you need to do is register your PSC # with GROW—

Call 503-659-8248

or write to:

[rahaas@haasfamily.us](mailto:rahaas@haasfamily.us)

With Your Name & Preferred Savings Card Number

**PSC #  
IS UNDER  
BARCODE**



# Share Your Stories!

Research requested for Germans from Russia in Portland in the early years.

Where did they live?  
What were their customs?  
Where did they go to school, work, or church?

We have received this request from an individual out of the area. If you would like to take this on, it would be great information to put in the newsletter as well.

Please contact: Lola M Weber, 106 Victoria St, Longview, WA 98632, or call 360-423-8359 or email: [hunter6806@msn.com](mailto:hunter6806@msn.com)



## GROW Membership Application

Germans from Russia Oregon and Washington



Years of Membership \_\_\_\_\_  New  Renewal

Birth Month (optional) \_\_\_\_\_ Anniversary Month (optional) \_\_\_\_\_

Name (please print) \_\_\_\_\_

Address \_\_\_\_\_

City \_\_\_\_\_ State \_\_\_\_\_ Zip \_\_\_\_\_

Phone (include area code) \_\_\_\_\_ Email address \_\_\_\_\_

Name of ancestral village(s) \_\_\_\_\_

Family surnames \_\_\_\_\_

Names of adults in household desiring membership cards \_\_\_\_\_

Enclosed is my remittance of \$ \_\_\_\_\_ Membership fees are due annually on January 1.

**GROW Newsletter/Operation Donation (minimum \$5.00)**

GRHS Membership \$40.00 • GRHS Lifetime Membership \$650.00 (\$130.00 per year)

**Make checks payable to GROW - US Currency Only • Mail to: Arlene Maston, 8202 NE Going St., Portland, OR 97220-4860**

Please send email updates and address corrections to Arlene Maston - [amaston@aol.com](mailto:amaston@aol.com)

**GROW Quarterly Newsletter Deadlines: September 1 • December 1 • March 1 • June 1**

All submissions are welcome. If you would like any materials returned, please include a SASE.

Send articles to: [jcprunier@comcast.net](mailto:jcprunier@comcast.net) or by mail at 1218 Pacific Ave., Everett, WA 98201

Center for Volga German Studies  
at Concordia University Is looking  
for all issues of:

**GRHS Heritage Review**  
**GRHS Der Stammbaum**  
**Volk auf dem Weg**  
(published before Oct 2008)

If you have any or all of the above,  
please bring them to a GROW Chapter Meeting  
or call Roger 503-659-8248.

*Brent Mai, Librarian, Faculty, Staff and  
Students of Concordia University  
thank you for your generous support.*



CONCORDIA  
UNIVERSITY

2811 NE HOLMAN STREET, PORTLAND, OREGON 97211-6099  
Local (503) 288-9371 Toll-Free (800) 321-9371 [www.cu-portland.edu](http://www.cu-portland.edu)

# NEWSLETTER SUBMISSIONS WELCOMED!

*Please send  
articles, photos, stories,  
anecdotes, recipes, etc. to:*

**Janice Prunier, Editor**  
**1218 Pacific Ave., Everett, WA 98201**  
**[jcprunier@comcast.net](mailto:jcprunier@comcast.net)**

*Deadline for next issue is June 1, 2009.*



**Germans from Russia Heritage Society**

**GROW Chapter**

8618 SE 36th Avenue  
Portland, OR 97222