



GROW Quarterly Newsletter

Area Chapter of the Germans from Russia Heritage Society (GRHS)

Volume 5 Issue 2

January - February - March 2006

Message from the President



Roger Haas, President

Today we were supposed to have snow in the Portland area, but the weather did not turn cold enough and we have the normal light rain. Many of us Dakotans like to see a little of the white stuff, but none of us are eager to go back to those memories of walking or taking a sled and horses to go to school, church, etc. Winter is a season to enjoy the warmth of the stove, the family gatherings around the Holiday table, and participating in the church and school Christmas programs. While there is debate as to whether it is Christmas or simply a holiday, most of us believe in the "reason for the Season".

This quarter has brought GROW, the hosting Chapter, to bringing the 2006 GRHS Annual Convention to the Portland Airport Holiday Inn in HIGH GEAR for its first Pacific NW debut. The 12-16 July gathering is showing real excitement, by the evidence that over 500 room nights have already been reserved at the Holiday Inn Convention Center. It is absolutely essential to reserve your rooms early if you want to lock up the \$88 price, including tax, by letting the hotel know that you are with the Germans from Russia and you want the FULL SERVICE HOTEL. There are a couple of other Holiday Inn Hotels and you will not want to be at wrong location. The Airport Holiday Inn has blocked 750 room nights for our 2006 GRHS Convention and we expect those to be taken before the pre-registration applications will be mailed around the first of April. The closest nearby hotel is one mile away for about double the price. To arrange for your room, please call Portland 503-256-5000 or 1-800-465-4329.

At least 40 Presenters have committed to coming to the Convention to put on Workshops and Presentations. The Ballrooms are fully scheduled, but since we have almost the entire hotel with the large convention facilities we are beginning to slot workshops for those areas. At this time we have not scheduled any repeat programs. Conventioneers will have an extensive program to make their selection and will have to be careful in making their

best choice(s). In another part of this newsletter you may see a little glimpse of the array of named titles that Program Chair Lola Weber has booked for outstanding entertainment, information and learning. If you have any friends or acquaintances who would be interested in Germans from Russia discoveries, collections, family histories and preservation of arts, you will favor them by letting them know immediately of this event, time and place.

Oregon, Washington and Portland have attractive tours and sites to visit. At this time, our Tour Chair, Jenice Gibson, has not finalized the proposed tours, but most likely a visit to St Josef's Winery and the beautiful Rose Gardens in St Paul, Oregon and will be one of the choices, and a Cruise down the Willamette will be another. The volcanic Mt. St. Helens may be a third choice with several mini/smaller tours.

Not all of the GRHS library will be transported to Portland, but the bulk will be available for research and viewing. GRHS National Librarian & Office Manager, Rachel Schmidt, some of her staff, and others will be available for your genealogy study, copying and adding to your records. If you have not had the opportunity to go to Bismarck or to the National GRHS Conventions, you will find this a most convenient time to supplement your

Continued on page 2.

Inside This Issue

<i>Ed's Corner</i>	2
<i>Gwen Pritzkau Endowment Fund Established</i>	3
<i>Germans from Russia Convention in Canada</i>	3
<i>Are your family members listed in EWZ Records?</i>	3
<i>2006 Convention...Entertainment & Speakers</i>	4-6
<i>Win a Twin-Size Quilt</i>	6
<i>Nov chapter meeting presentation</i>	7
<i>2006 GRHS Convention Worship & Memorial Service</i>	7
<i>Historic Crochet Doilies</i>	8
<i>2006 GRHS Convention Hosts Needed</i>	9
<i>Quarterly Calendar</i>	10
<i>Genealogy Class Offered</i>	10
<i>Sunshine News</i>	11
<i>GROW Board of Directors Sets New Meeting Place</i>	11
<i>Family & Holiday Traditions</i>	12

Ed's Corner

At the last GROW Chapter a number of our members gave short biographies so we could all get to know each other better. Most came from the Dakotas and described conditions as they were "back in the olden days." The discussion got around to the observation that most of the homes did not have indoor toilets. Isabel, SD, my birthplace, did not get city water or indoor toilets until the 1950s. As a boy, I still recall some winters when the temperature got down to the zero mark it required courage to go outside and travel the 100 feet to the outhouse. The discussion got around to whether public buildings also required outdoor facilities. In Isabel the 1st to 4th grades were in the basement of the Community Hall and had deluxe accommodations used



Ed Weber



by the public in general and there were two, "two holers", a Men's and Women's. The 5th through 12th grade attended school in the High School building and I guess you would have to say there were super deluxe accommodations, two "three holers." The picture (left) is of the Isabel, SD high school building and you can see one of the super deluxe accommodations

at the rear of the building.

With the GRHS 2006 Convention that will be held here in Portland, we can expect a large group of guests to travel from many different areas of North America. The means of travel has changed from the time the Germans traveled to Russia and then to North America. The route being used by our guests in 2006 will probably be along the route used by Lewis and Clark in 1803-1806 or along a parallel route, the Platte River, used for the western migration of travelers who followed the Oregon Trail. About 70 percent of the pioneers who traveled the Oregon Trail ended their journeys in the Willamette, Oregon area. In addition to exploring the Louisiana Territory purchased by the United States in 1803 Lewis and Clark were requested to find the water route (The mythical "Northwest Passage") to allow the infant United States to have a commercial water route from the Atlantic Ocean to the Pacific Ocean.

The main travel by Lewis and Clark was by boat with the exception of their travel over the Rocky Mountains when they rode or walked. When they got into the Columbia River systems and once more went by boat. In 1805 there were no marinas where the expedition could rent boats to continue their trip to the Pacific so they had to make their own dugout canoes. The solution to this problem was to make their own canoes by using large pine logs. The Nez Perce Indians showed them how to make the dugouts and two weeks later four large and one short dugout were produced, enough to carry the whole expedition down to the mouth of the Columbia and to allow the party to return the following year.

The photo to the right was taken in September and it appears that I am sitting on a log at the canoe dock of Fort Clatsop. The log is a replica of one the canoes manufactured by the Lewis and Clark party. As you can see there were really are no deluxe accommodations for the Lewis and Clark crew. From Portland you can book passage on a couple of cruises that follow the route of Lewis & Clark from Astoria all the way to Lewiston, Idaho and you do have some choices to make. Do you want to have a large stateroom or a small one?



At the time Lewis & Clark were exploring the travel accommodations from St Louis to the Pacific Ocean, a lot of our predecessors were traveling from Germany to new homes in Russia. Often they traveled by boat down the Danube River or river craft on Russian Rivers to South Russia and the new German colonies. The accommodations were on a par with those for Lewis and Clark.

That's it from Ed's Corner.

President's Message, cont.

knowledge and help you with your family search and obtain genealogical help.

We have members coming forth to assist in various tasks, but more willing hands are never turned away for they help to make work fun and easier. Thanks for stepping forth and volunteering your expertise or services of any kind. Joni Jundt and Jennifer Messenger will be coordinating your time (little or much) and interests to help. They are charting and slotting the Area Chairs requests/needs and the Volunteers interests or willingness. Call or write these delightful young ladies to more fully enjoy the total Convention. You have heard that the teacher learns more than the student. The experiences you will take away will add to your enjoyment.

and Jennifer Messenger 503-574-2271, jenn-messenger@hotmail.com

The entertainment program is not complete, but stars like Vienna, Austria Opera trained Johanna Oh, Baritone soloist Arthur Flegel, the 65-member Liedertafel Harmonie, the Empter Brother/Family Accordionist, and the Polka Beat Band, among others, are sure to delight you and give you inspiration to sing. Two afternoons will feature a sing-a-long in German and English with a list of about 50 songs which will be led by Mabel Kusler, member of the River Harmony Sweet Adelines, and Coordinator of the Die Deutsche Glieder Singers of Pierre, SD. Also helping to lead will be Del Beck, member of the Barbershop Harmony Singing Society and his wife Sharon at the keyboard. One item may be unusual, but if you play an instrument, sing, or if you can create some entertainment, we will have a place for you, maybe at a kitchen break, intermission, prelude to each day or somewhere. This would add to the fun and enjoyment to the

Continued on page 3.

Gwen Pritzkau Endowment Fund Established

At the 2005 Convention, the Heritage Foundation for Germans from Russia (HFGR) proudly announced the founding of the Gwen Pritzkau Scholarship Endowment.

Black Hills GRHS Chapter members, Steve and Debbie Eberle from Gillette, WY, decided to establish the Fund in honor of Gwen Pritzkau from Riverton UT, an outstanding authority on German Russian for over 30 years. It was a way to say THANKS for her invaluable assistance in their own family research. She refused to accept compensation for the time she spent doing genealogical research at the Family History Library in Salt Lake City, UT in behalf of the family. Gwen Pritzkau will be a 2006 GRHS Convention Presenter in Portland. Plan to hear her.

The Eberles set up this permanent endowment to which others may also contribute in support of the GRHS Youth

and Scholarship. They hope to ensure that the interest in German-Russian history/heritage will be passed on to future generations. The fund is an "endowment" which means that only the interest on the monies held in this fund may be spent. The two 2005 GRHS Youth Committee scholarships totaling \$750.00 awarded to essay contestants were from the interest of this Fund.

The Eberles' vision was greeted by other generous attendees to contribute at the Convention. If you, or anyone that you may know, is interested in making a tax-deductible gift to the Pritzkau Endowment, please contact HFGR Director/Treasurer, Ted Becker tbecker@nemontel.net or call him at 701-572-5715. HFGR is committed to supporting and promoting of other endowments for preserving the GR history.

Germans from Russia Convention in Canada

by Joe & Geri Gander

My husband and I had the opportunity to attend the Germans from Russia convention which was held in Medicine Hat, Alberta CA in September. The convention had many very good speakers, some will be speaking for our convention this coming July here in Portland, OR.

The people were very pleased to hear that we drove all the way from Portland, OR USA to attend their convention. I then informed them that it was now their turn to come to our convention in July, 2006. Many have asked me to be sure and let them know all of the information

regarding our upcoming convention as they were very interested in attending.

It was interesting that none of the members from Medicine Hat or other areas wore identifying vests. Ours were outstanding and prompted many comments from others.

We had a pleasant trip, the drive through the Glacier National Park was beautiful. This was the first time we have been able to see it. The weather was sunny the whole week we were on the road.

Are your family members listed in EWZ Records?

Basically all we need to know is if any of their family members stayed in Russia, and if family members or descendants may have been alive in the 1940s to be involved in the evacuation of the Germans from Russia by the German Army.

We would need to know:

1. surnames;
2. the names of common relatives, such as parents or grandparents;
3. and what village(s) in which they might have been living ca 1942-1944.
4. to find sisters who stayed behind, indicate their married surname if known.

Nearly every G-R family who emigrated had brothers, or sisters who stayed behind. These are the folks for whom we would be looking. Since most emigrations to America occurred in the late 1800s to early 1900s, those who stayed behind would likely be recorded as the parents or grandparents of persons living in the 1940s.

If we are given such information, we would look for the

family members in the EWZ records at National Archives II. If we find anything, as we have for past workshops, Jan would incorporate their family story(ies) into our presentation.

Regards,

Tom Stangl

1106 South Sterling Blvd

Sterling, VA 20164-4316

USA

TSTANGLSR@aol.com

President's Message, cont.

Conventioners.

I could go on, but this is a little taste of what's in store for your 2006 GRHS Convention attendance. Let others know you are a German from Russia and/or supporter and proud of it.

Ich wunsche euch ein Fröhliche Weihnachten und ein gesundes Neues Jahr. (I wish you a Joyful Christmas and good health during the New Year).

2006 Convention...Entertainment & Speakers

by Vivian Messenger

On Saturday evening July 15, 2006 the Oregon Polkabeats will be performing at the dance. Formed in 1987, the majority of their engagements have been in the Portland area. They have also played in Washington, Idaho, California, and Arizona. Their lively dance music features foxtrots, swing, two-steps, waltzes, polkas ballroom, rhumbas and old standards.

Other featured entertainment includes *Liedertafel*, a group of men and women who have performed a variety of folksongs for various occasions and *The Emters*, brothers who originate from the Dakotas who bring toe-tapping fun to German songs.

2006 GRHS Convention Speakers July 13-15, 2006

by Lola M. Weber, Program Coordinator

We are very excited with the caliber of speakers who will be at the convention in Portland, Oregon with presentations scheduled for the July 13th, 14th and 15th.

Be sure to mark it on your calendar and make your reservations early for a great experience. We look forward to seeing you in Portland.

Following is a short synopsis of some of the presentations:

"The use of Computers for Genealogical Research"

Marty McMahan

This workshop will examine the use of computers in doing online genealogical research using GRHS on-line resources, the Odessa Library and other non-GR specific data sources.

Some exposure to programs that can assist in the recording of genealogical data, providing basic displayed and printed outputs and organizing your data will be shown. It is geared for people who have basic computing skills and wish to use those skills in doing genealogical/family history research.

"Did They Come Here Through a Canadian Port?"

George Dorscher

I will outline conditions in Russia that encouraged our ancestors to emigrate to the Americas and the conditions that drew them here. I will address the passport procedure and travel arrangements that took our people to a European port, particularly the travel to a port in England and then to one of the three Atlantic Canadian ports. Travel arrangements for settlement in the US or Canada will be noted before I display a list of surnames of people destined to BC, Washington, Oregon, Colorado and California through Canadian ports from 1900 to 1914.

"Microfilm Acquisitions from the Odessa Archives and Related Mennonite Research"

Tim Janzen

Beginning in 1996 the Center for Mennonite Brethren Studies in Fresno, California began a cooperative project with the Odessa State Archives in Odessa, Ukraine to microfilm additional documents housed in the archive, with a focus on Mennonite related materials. So far, 33 rolls of microfilm containing a total of over 100,000 pages of documents have been produced from files found in Fond 6. The documents found in these microfilms date from the early 1800s through the 1870s and contain much information of historical and genealogical value pertaining to Mennonites and other Black Sea area German-Russians.

"The Work & Projects of the Germans to Russia Heritage Collection (GRHC), North Dakota State University Libraries, Fargo"

Michael Miller

The presentation will focus on the Germans from Russia Heritage Collection (GRHC) activities including the Dakota Memories Oral History Interview Project, the GRHC website, outreach programs, publishing, documentaries and the development of an online course on the Germans from Russia.

"BDC/EWZ – What is It? What Can Be Found There?" – Thomas and Janice (Huber) Stangl

A workshop on the uses of Berlin Document Center microfilms of the records of the Einwandererzentralstelle (EWZ) [Central Immigrant Office] at US National Archives II, College Park, MD.

"Hoffnungstal Odessa Parish [HOP] Regional Interest Group [RIG] Workshop and annual RIG business meeting"

Dale Wahl

We will review the RIG organization and take care of any business brought forward by the RIG membership. We then will highlight the activities that have occurred this past year, reflect on some resource aid available and review the additional data placed on the RIG web pages this past year, and follow-up with a round of Q&A as time allows.

"Town Meeting"

Dale Wahl

We will talk about what is going on with our Archives Records efforts: what we are finding; what we are bringing back; what we are doing with what we are bringing back; and LDS filming in four of the prime archives we are interested in.

Continued on page 5.

2006 Portland Convention Speakers (cont.)

"To Understand The Characteristics of a Russia German"

Shirley Wegner Nitschke

It is my desire to interest people in the makeup of a true Russia German, and what it truly means to be a German from Russia. The hardships they overcame. The ridicule at the hands of the Russians they endured. The proud Russia German "stepped aside" and quietly performed at a degree of distinction. Their accomplishments on the steppes of Russia are numerous and the German people were truly amazing in their contribution to the Russian populace.

"I dream of you so often...": Ethnic Germans in 'Russia' Write Their American Relatives (1915-1937)

Ronald Vossler

1. The letters reveal much about daily life in the ancestral villages under both the Czarist and Bolshevik regimes.
2. The letters reveal the deep connections, and the sometimes troubled relationships, between families and friends separated by immigration.
3. Valuable primary source documents, the letters reveal the twin policies—terror and food as a weapon—which the Bolsheviks/Soviets used to "destroy in whole or in part" German villagers in Ukraine and elsewhere.
4. The letters help us understand the emotional lives of the settlers' generation in the United States, and their silence about the fate of relatives under the Bolshevik/Soviet regime.

"The EWZ Records Extraction Project"

Tim Janzen, Elli Wise, Ed Bischoff

The Einwandererzentralstelle (EWZ) records are a rich source of genealogical information collected during World War II from those people of German background who lived in the portions of Eastern Europe or Russia that were occupied by the Axis forces. This presentation will summarize a project that has been underway since 2000 to extract information from the EWZ microfilms so as to serve as an index to the people found in the microfilms.

"Grossliebental District Odessa (RIG) Regional Interest Group"

Gayla Gray

The Grossliebental District Odessa (GDO) Regional Interest Group (RIG) was formed because a group of people recognized the need to bring together people with a specific interest in the Grossliebental District of Odessa. This group is interested in the collection, publication and preservation of our heritage as Germans from Russia. The group maintains a web site, discussion group, and newsletter all focused on the preservation of folklore, songs, literature, objects of art, genealogies, photos, documents and all applicable records focused on the Grossliebental District of Odessa.

RIG Annual Meeting

Germans to Prussia-Poland to Russia"

Tom Stangl

There are diverse interests among the group members. These include many areas in South Russia, as well as in West/East/South Prussia, Poland, Posen, Silesia, and areas further west in Old Prussia, such as Brandenburg, Mecklenburg, Neumarck and Pommerania, where it is assumed that many of our ancestors may have originated.

The name of our group is Germans to Prussia-Poland to Russia. The group plans to emphasize its efforts in the 1750-1820 timeframe. Some group members have already traced families back to Prussia-Poland and are now seeking entirely different information resources in trying to locate their origins and trace their migrations backwards from the early 1800s. Others in the group are interested in the rich and complex history of the region and the migration patterns dating back into the middle ages. Overlaying all of this are the influences of the Mennonite emigrations and their settlements in northwest Prussia, and subsequently into Russia.

"SING-A-LONG"

The highly-popular GRHS Sing-a-long again will be an important feature of the convention. Mabel Kusler, Del Beck and Sharon Beck will lead convention attendees in singing many German favorites. Can't read German? It's really quite easy and we'll help you. Besides, verses in English are much a part of this activity. These wonderful songs give us a great opportunity to celebrate and preserve our heritage.

"From Ukraine to Spokane:

Three Ways of Telling a Family History"

Alex Herzog and Maria McKeirnan

Three members of my family, all born in the Black Sea region, have recorded, one way or another, and all very differently, their life stories, how they meandered eventfully from there to a successful and happy life in the US. Our intent is also to encourage others to record their story for their own families.

"Bessarabian Regional Interest Group [RIG] Workshop and annual RIG business meeting"

Dale Wahl

We will review the RIG organization and take care of any business brought forward by the RIG membership. We then will highlight the activities that have occurred this past year, reflect on some resource aid available and review the additional data placed on the RIG web pages this past year, and follow-up with a round of Q&A as time allows.

Continued on page 6.

2006 Portland Convention Speakers (cont.)

"Escape and Survival: The Last Train Out"

Willi Wutzke

He relates his personal experiences of repeated deliverance from death during and after World War II in Volhynia, Ukraine; Poland, and Germany. Wutzke family's refuge years were troubled by hunger and disruption and they were pushed far from home by the forces of war.

Willi will present his life experiences including recent trips to Eastern Europe, and music of the past as part of his program.

"Reading Cyrillic Script"

Valerie Ingram & David Kilwien

A beginner's crash-course in deciphering names written in Russian script. With all the new records flowing out of the Ukrainian archives, the GRHS is looking for more people to help in translations. Here's your chance to see if you can do it!! Workbook will be provided.

"Crimean Research & RIG (Regional Interest Group) Annual Meeting"

Wanda Hopkins and Deb Beick.

Updates and discussion on: 1850 Census, 1868 Land Records, Adamsfeld and Hocheim Parish Church Records and exciting new records.

"Family Tree Maker – Basic"

Valerie Ingram & David Kilwien

Learn the basics of using the genealogy program used by most! We'll guide you through inputting, sourcing and creating basic charts. Bring your questions and we'll help you answer them!

"Family Tree Maker – Advanced"

Valerie Ingram & David Kilwien

Use the advanced features of Family Tree Maker to create easy family books and learn how to add pictures and images to create unique charts for gifts or family reunions.

"The Migration of the German Russians — Germany to South Caucasus, Ukraine, Siberia and America"

Milo Bauder

As a result Milo Bauder's extensive travels to the old German homeland, to the steppe land of the Ukraine, the Crimea peninsula and exotic Georgia in the Transcaucasus, he has collected a remarkable photographic collection that provides a visual record and gives us a glimpse of what life was like for our German ancestors in old Russia.

"Prussia to Oregon by way of Russia"

Kurt Radtke

No information available.

Raffle Tickets For Sale

Win a Twin-Size Quilt

\$2.00 each

3 for \$5.00

Originally Designed and Quilted by Alice Summers (shown right) who has donated it to GROW for Raffle at the GRHS Convention July 12-16, 2006

Tickets available at Chapter Meeting or call Maxine Daily (503) 253-8388.

Sales proceeds will go toward convention expenses.

Tickets are Tax Deductible



November Chapter Meeting Presentation: Sally Freeman: Fort Clatsop National Park Ranger

by Ed Weber

Fort Clatsop National Park Ranger Sally Freeman truly brought the Lewis & Clark Expedition alive for the audience as she highlighted the only German, Private John Potts, and three others. Having grown up in St Paul, Oregon, received her BA in Communications Arts with a minor in History and a BS at George Fox. She personalized the history of the 33-Member Expedition stay in Oregon during the fall of 1805. She has been employed as a Seasonal Park Ranger at Fort Clatsop National Memorial on a part time basis and then became a full time Ranger at Fort Clatsop.

Sally and her family will be GROW Honorary Members until Dec 2006 and a \$20. donation will be given to the Ft Clatsop Historical Association, 92343 Fort Clatsop Rd, Astoria, OR 97103. This is a very small token of appreciation for Sally's excellent Presentation. She has been asked to be a Convention Luncheon Speaker if she can arrange her schedule.

Lewis & Clark's 8,000 mile trek in walking, riding and paddling for 2 years, 4 months, and 9 days was a remarkable and productive military expedition. The magnitude of their journey is equivalent to today's exploration of space.



Ed Weber (left) and Sally Freeman, Fort Clatsop National Park Ranger at the November Chapter Meeting.

Sally's brief history included colorful Commemorative Guides, and Maps with historic sites, commencing from Philadelphia to Astoria and brochures of Fort Clatsop also in German and Russian were also available.

GRHS Convention Worship Service & Memorial Service to be held on Sunday, July 16, 2006

By Dr. Harley Miller

To conclude the 36th Annual International Convention of the Germans From Russia Heritage Society which will be held at the Portland, Oregon's Airport Holiday Inn from July 12 through 16th there will be a Christian Worship Service and a Memorial Service on Sunday morning, July 16, 2006.

All the GROW members are straining on the gates and chomping at the bit to make your attendance at this convention the experience of a lifetime. We hope to make this a worship experience you will long remember.

We are fortunate to have available talented and accomplished individuals who will lead in various aspects of the worship service. We are especially pleased to have Dr. Clarence Knoepfle a minister of the gospel as the main speaker. Dr. Knoepfle is a descendant of Russian born Germans and is a native of Artas, South Dakota. His early education was in the Artas school system as well as in the Eureka, South Dakota High School.

Others who have thus far committed to be with us are

Lloyd Kiesz, also a descendant of Russian born Germans. He is a very talented and accomplished pianist whose early memories originate in the Java, South Dakota area.

There will be singing in English and in German. Song leaders will be Delbert and Sharon Beck, of Eureka, South Dakota and Tara Leno from the state of Washington.

Near the conclusion of the morning there will be a memorial service during which each GRHS member who has passed on during the preceding year will be remembered in a special candle lighting ceremony. We invite all of you who have lost a loved one to death during the past year to be present and participate in this service.

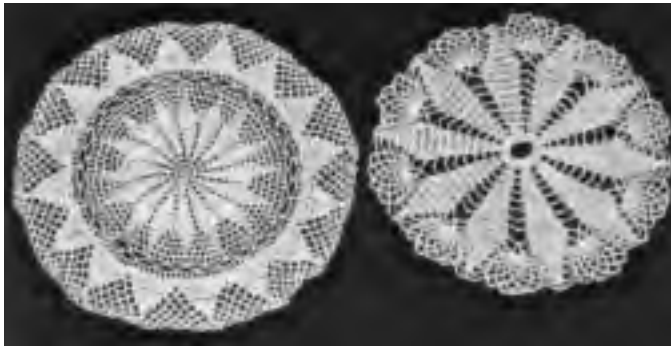
Visiting the Pacific Northwest in July is, predictably, a paradise vacation spot. We want you to see Portland, Oregon, the City of Roses situated on the banks of the mighty Columbia and we want you to see the snow capped peaks of Mt. Hood and Mt. Rainier. Also, you won't want to miss seeing Seattle's skyscrapers and taking an elevator to the top of the Space Needle.

Kommen doch Alle!!

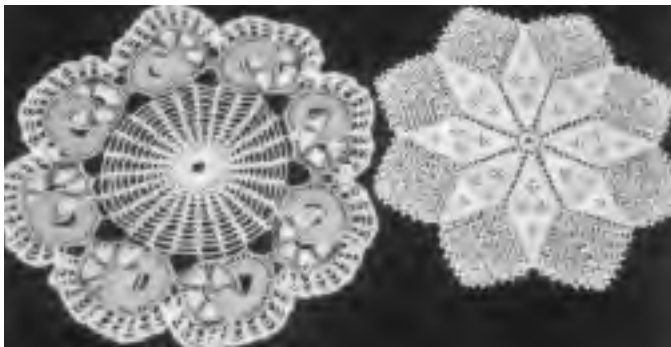
Historic Crochet Doilies

The Glückstalens in New Russia and North America A Bicentennial Collection of History, Genealogy and Folklore. Published by Glückstal Colonies Research Association, 2004. Excerpted from an article by Connie Dahlke. This book is available for sale at GROW Chapter Meetings.

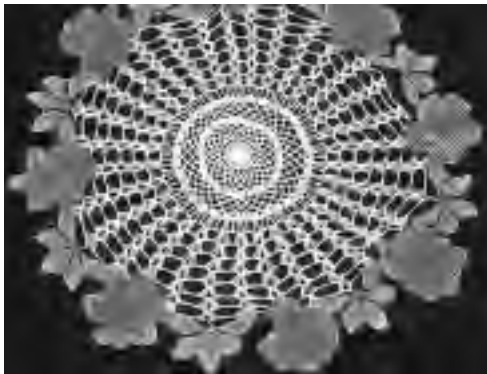
The handcrafting of doilies has long been a popular form for crochet work. Most doilies are moderately sized and can be completed by the experienced crocheter in only a few hours of handwork. Doilies can be made from a variety of design elements to form a nearly infinite number of completed designs. Their decorative aspects add both elegance and charm to the family home.



An 11-inch doily with 16-point sunburst center and triangle-inset border, and a 10-inch doily of a 10-point poinsettia design with lacy edging, crocheted by Olga (Zinck) Stolz, b. August 8, 1906, Medina, ND. The Zinck family arrived in Glückstal before 1811 and by 1845 had further resettled in Brienne, Bessarabia.



A 14-inch doily with double wedding rings surrounding a spiderweb center design, and a 12-inch doily of Star in Snowflake design, by Karoline (Liebich/Liebig) Kirschenman, b. February 22, 1887, Kassel.



This large spiderweb doily fancifully decorated with bright flowers and leaves was crocheted by Mary, a German Russian resident in the Bowman, ND nursing home.

GROW Committee Chairs

*Board of Directors Member contact info on page 9.

- Calling**.....*Oscar Geiszler
- Car Pooling**.....*Oscar Geiszler
Glenn Gumeringer (360) 573-6453
Bob Majhor (503) 648-5781
- Hospitality/Greeting**.....*Jan Haberman
- Collection/Research & Genealogical Assistance**
Bob Schauer (360) 687-1905 - bschaue@pacifier.com
- Library**Carrie Lippincott; Alice Summers
Vivian Messenger (503) 574-2271 - cvmesseng@hotmail.com
Glen Gumeringer - amggum@aol.com
- Membership**.....*Geri Gander
- Newsletter**Jan Prunier - janice.prunier@verizon.net
Jennifer Messenger, labeler; Alice Summers, printing, mailing
- Programs**.....Paul Voeller, Roger Haas
- Refreshments**.....Roberta Haas (503) 659-8248
Lorraine Geiszler; Ann Gumeringer; Jane Radtke;
Rosalie Schachterle; Paula Pfau
- Pictorial Scrapbook**.....*Maxine Daily
- Special Interests/Obituaries**.....*Jan Haberman
- Sunshine Gals**.....Amelia Lybarger (503) 648-1058
655 SE Washington St., Hillsboro, OR 97123; *Jan Haberman
- Volunteer Coordinators**.....Dennis Levi (360) 699-4884
Jennifer Messenger (503) 574-2271; [REDACTED]
- Website**.....Dean & Jan Prunier

GROW 2006 Convention Chairs

- Entertainment:**Vivian Messenger
- Copiers:**Steve Geiszler
- Food, Facilities & Equipment:**Ilene/Roy Schnaible
- Library:**Bob Schauer
- Memorial Service:**Dr Harley Miller
- Programs:**Lola Weber
- Publicity:**Roger Haas
- Registration:**..... Jan Haberman
- Tours:**Jenice Gibson
- Treasurer:**Betty Thatcher
- Volunteers Coordinators:**Jennifer Messenger & Joni Jundt



"Rising Sun" doily with 16-point sunburst center, crocheted by Elizabeth (Schmlerer) Dockter, b. July 23, 1908, near Wishek, ND

Host Volunteers Needed!

Would you be willing to host a workshop session (or two) at the convention?

This is the extra touch that gets each session going and makes both presenter and audience more comfortable.

This would include introducing the speaker and helping the session run smoothly.

Your time at the front of the room is brief but covers a number of details:

- Arrive at the session ten minutes before starting time.
- Be sure there is drinking water available for the presenter.
- Check the equipment with the presenter to make certain all is working well. (you will have a list of equipment for the presenter)
- Contact for any difficulties:
- Start on time, even if you must ask "hangers-on" to relocate.
- Introduce the presenter by highlighting information from the convention booklet. Feel free to add whatever you can based on what you know about the presenter or may have learned in the past 10 minutes with the presenter.
- Assist with handouts.
- Get a count of attendees at each session. Record this on your evaluation sheet.
- Remain in the session for anything that may be needed (adjustment of lights/heat etc).

Thank you for helping make the convention a success for the presenters. I will be in touch with you periodically as the convention time gets closer. I will supply you with the names of the presenter and the time of their session(s).

Contact:

Lola M. Weber
Coordinator, Programs
106 Victoria St
Longview, WA 98632-5834
Email: hunter1@scattercreek.com
or call 360-423-8359



GROW Board of Directors

Roger Haas, President/Liaison

8618 SE 36th Ave. (503) 659-8248
Portland, OR 97222 rahaas@haasfamily.us
Term ends: 2007

Jan Haberman, Vice President

8110 SE Madison (503) 252-5480
Portland, OR 97215 haberman988@msn.com
Term ends: 2008

Maxine Daily, Secretary

454 NE 69th Ave (503) 253-8388
Portland, OR 97213-5504 max_627@msn.com
Term ends: 2006

Alice Summers, Treasurer

130 SE 155th Place (503) 775-9929
Portland, OR 97233 sewsum4u@msn.com
Term ends: 2008

Roy Schnaible, Convention Food, Facilities & Equip.

16232 SE Alder Meadow Dr.
Clackamas, OR 97015 gourmetir@aol.com
Term ends: 2008

Geraldine Gander, Membership

14926 SE Lowell Lane (503) 625-3070
Sherwood, OR 97140-7014 neatfamily@verizon.net
Term ends: 2007

Oscar Geiszler, Fundraising

803 5th Ave (503) 656-1802
Oregon City, OR 97045 oscarandlorraine@msn.com
Term ends: 2007

Jenice Gibson, Convention Tours

14350 S. Hawthorne Ct. (503) 632-3990
Oregon City, OR 97045-9167 largen@bctonline.com
Term ends: 2006

Betty Thatcher, Convention Treasurer

16345 SW 130th Terrace #51 (503) 639-8254
Tigard, OR 97224-3008 b.b.thatcher@att.net
Term ends: 2006

Fundraising Opportunities—

At No Cost To You!!

- Electronic Newsletters. Receive your newsletters via email, and save GROW in postage costs.
- Albertson's Scan Cards - Contact **Roger Haas** for your card if you don't already have one.

Other Opportunities to Help...

- **Oscar Geiszler** is recycling inkjet and laser cartridges. Bring your empty cartridges to Chapter Meetings or contact Oscar directly. He can also help you receive approximately 50% discount on refilled cartridges.
- Visit **Alice Summers** before/after the Chapter Meetings to view the fascinating collection of books, audio CDs, videos, etc. that are available for sale. Also take a look at the tote bags, key chains and magnets, all with GROW logo.

GROW 2005 Quarterly Calendar

J A N U A R Y 2 0 0 6						
SUN	MON	TUES	WED	THURS	FRI	SAT
1 New Year's Day	2	3	4	5	6	7
8	9	10	11	12	13	14
15	16 Martin Luther King Day	17	18 Board Meeting	19	20	21
22 Chapter Meeting	23	24	25	26	27	28
29	30	31				
F E B R U A R Y 2 0 0 6						
SUN	MON	TUES	WED	THURS	FRI	SAT
			1	2	3	4
5	6	7	8	9	10	11
12	13	14 Valentine's Day	15 Board Meeting	16	17	18
19	20 President's Day	21	22	23	24	25
26 Chapter Meeting	27	28				
M A R C H 2 0 0 6						
SUN	MON	TUES	WED	THURS	FRI	SAT
			1 Ash Wednesday Newsletter Deadline	2	3	4
5	6	7	8	9	10	11
12	13	14	15 Board Meeting	16	17 St. Patrick's Day	18
19	20	21	22	23	24	25
26 Chapter Meeting	27	28	29	30	31	

Chapter Meetings are held at:
Deutesches Haus
7901 SE Division, Portland, OR
Doors open at 1:00 pm
Meeting starts at 2:00 pm until about 5:00 pm
Coming from I-205 South take Exit 19 Ramp and turn West on Powell Blvd to 82nd Ave. Go .5 mile North to Division St., then turn left and go to 7901.
Coming from I-205 North take Exit 19 Ramp onto Division St. Go West on Division to 7901.

22 January 2006
"Midnight at the Luther Stone"
presented by Sharon Miller.



In 1990 Harley and I and some of Harley's Bessarabian born cousins who now reside in West Germany made an automobile tour into East Germany soon after the wall had come down. We drove on into Poland and visited family villages. En route we followed, quite extensively, the trails of Martin Luther. Luther, from whatever perspective he is viewed, was one of the most influential individuals of modern history.

26 February 2006 Ell Schiermeister, Humorist and Historian

26 March 2006 Lilli and Josef Fleischmann. Their farm, vineyards and winery will be a Convention Tour destination.

Genealogy Class

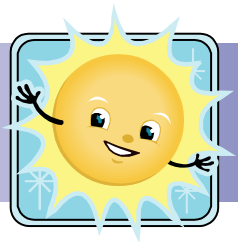
Susan Baird presented GROW with \$230. toward the Convention expenses from members attending her Genealogical Classes. January? will be her next Genealogy Class and all the proceeds will go to the Convention.

Thank you, Susan, for your generosity and support. Write Susan susanb120@comcast.com or call her at 503-698-2449 if you would like her skillful help and sign up for the next class.

Newsletter Submissions Welcomed!
Please send articles, photos, stories, anecdotes, recipes, etc. to:
Janice Prunier, Editor
1218 Pacific Ave., Everett, WA 98201
janice.prunier@verizon.net
Deadline for next issue is Mar. 1, 2006.

Sunshine News

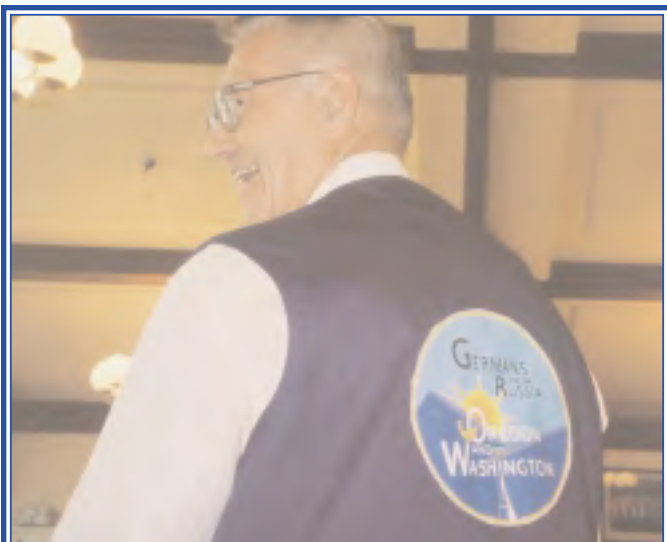
by Jan Haberman



Our prayers go out on behalf of Paul Voeller, Amelia Lybarger, Lorraine Geiszler, Helen Majhor and Del Ussleman. The latter: Helen & Del surprised us in attending our Meeting. In fact, Del gave us a report of how he has been wrestling with cancer at the November Chapter Meeting, but wanted to come to share his thanks for the Members' thoughts and Prayers.

GROW BOD Sets New Meeting Place

The GROW Board of Directors unanimously voted at the Wed., December 14 Board Meeting to meet at Alice Summer's home located at 130 SE 155th Pl, Portland, Or 97233, phone 503-775-9929, instead of Libbie's in Milwaukie. The change will be effective beginning with the next Board Meeting on 18 January 2006.



Chapter Vests Available

If you haven't ordered your chapter vest yet, call Maxine Daily, 503-253-8388 or Roberta Haas, 503-659-8248 or see her at the next Chapter Meeting where samples will be available to try on for size. They are \$12.95



GROW Membership Application

Germans from Russia Oregon and Washington



Years of Membership _____ New Renewal

Birth Month (optional) _____ Anniversary Month (optional) _____

Name (please print) _____

Address _____

City _____ State _____ Zip _____

Phone (include area code) _____ Email address _____

Name of ancestral village(s) _____

Family surnames _____

Names of adults in household desiring membership cards _____

Enclosed is my remittance of \$ _____ Membership fees are due annually on January 1.

GROW Newsletter/Operation Donation (minimum \$5.00)

GRHS Membership \$40.00 • GRHS Lifetime Membership \$650.00 (\$130.00 per year)

Make checks payable to GROW - US Currency Only • Mail to: Roger Haas, 8618 SE 36th Avenue, Portland, OR 97222

Please send email updates and address corrections to Geri Gander - neatfamily@verizon.net

GROW Quarterly Newsletter Deadlines: September 1 • December 1 • March 1 • June 1

All submissions are welcome. If you would like any materials returned, please include a SASE.

Send articles to: janice.prunier@verizon.net or by mail at 1218 Pacific Ave., Everett, WA 98201

Family and Holiday Traditions

by Jan Prunier

New Years Eve was always a special night for my kids and me. We would take down all of the Christmas decorations and would have a special dinner of assorted hors d'oeuvres, sparkling cider, watch a favorite video and try our hardest to stay up until midnight and make a lot of noise! The kids would help plan the menu and together we would fix all of the treats. We would drink our sparkling cider out of wine glasses. There were several items that the kids insisted we have every year, included are: cream cheese shrimp dip, sliced summer sausage, assorted cheeses, pickles, olives, assorted veggies and crackers.

One of the challenges of being a working mom was trying to get a nutritious meal on the table every night. I came up with several quick and easy recipes that I could sneak vegetables into. One is the Quick Chicken Noodle Soup recipe featured in this edition. This hearty soup is ready in 30 to 45 minutes and is true comfort food and is perfect on a cold winter afternoon or evening.

May the new year bring you and your loved ones many joys and happiness.



Jan's Quick Chicken Noodle Soup

When the kids were growing up I needed up come up with recipes that were healthy, quick and tasted good, this is one of those that was born out of necessity. It tastes like it's been cooking all day, but it takes less than an hour.

4 boneless, skinless chicken breasts
4 cans chicken broth/stock
medium onion, chopped
12 oz. bag of wide noodles
1 tsp. garlic powder

1 tsp. celery salt
2 tbsp. parsley flakes
salt & pepper to taste
optional: bag of frozen veggies, stir fry
with asparagus is good

Sweat onion until tender, add frozen or thawed chicken breasts and 2 cans of chicken broth, salt & pepper and garlic powder. Poach chicken for 15 minutes or until done. While chicken is poaching, cook noodles in separate pot. Remove chicken and cut in bite-sized pieces. Return chicken to broth, add other 2 cans of broth, drained noodles and frozen veggies, simmer until veggies are warmed, 5-10 minutes. More broth can be added if you like thinner soup.



Germans from Russia Heritage Society

GROW Chapter

8618 SE 36th Avenue
Portland, OR 97222